



Mill House

BY GEMTERRA

A PRESTIGIOUS ENCLAVE OF LUXURY TOWNHOMES



HERITAGE-INSPIRED CLASSICALLY CRAFTED HOMES

Welcome to the Mill House in Buttonville-Markham. This exclusive enclave is reserved for people with a passion for exceptional living. Located in a Heritage Conservation District rich in local history dating back to the early 1800s, this sought-after location will be home to 33 perfectly designed townhomes and an impeccably renovated heritage home. Surrounded by rolling green space and the sparkling waters of the Rouge River.

Mill House is a quiet oasis to call home, minutes from the best of Markham.

Mill House is a community unlike any other.

Mill House
BY GEMTERRA



LUXURY LIVING AT EVERY TURN



At street level a feeling of quiet luxury envelopes Mill House. Meticulously crafted stone and brick townhomes alternate along a beautifully verdant streetscape creating a stunning traditional aesthetic with modern amenities. Each elegant townhome includes modern open concept plans, oversized windows and light-filled spaces beneath generous high ceilings.





Beautifully designed contemporary kitchens invite your inner foodie to indulge in grand style. Contemporary style cabinetry accented by quartz backsplash and countertops with integrated stainless-steel appliances create a sleek environment for meal prep and a relaxing space for gathering. The breakfast island and table area create a warm, welcoming place to spend quality family time.

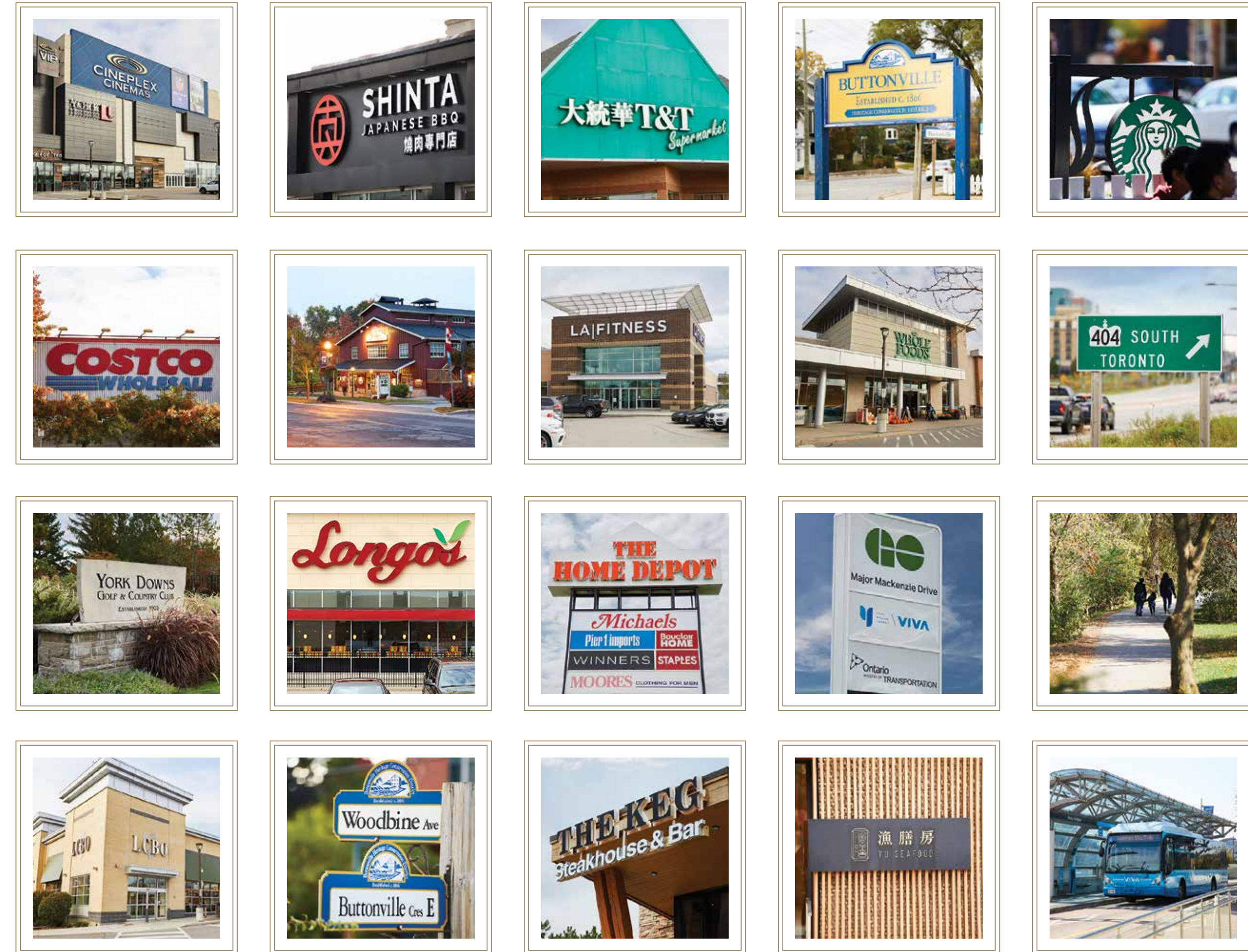
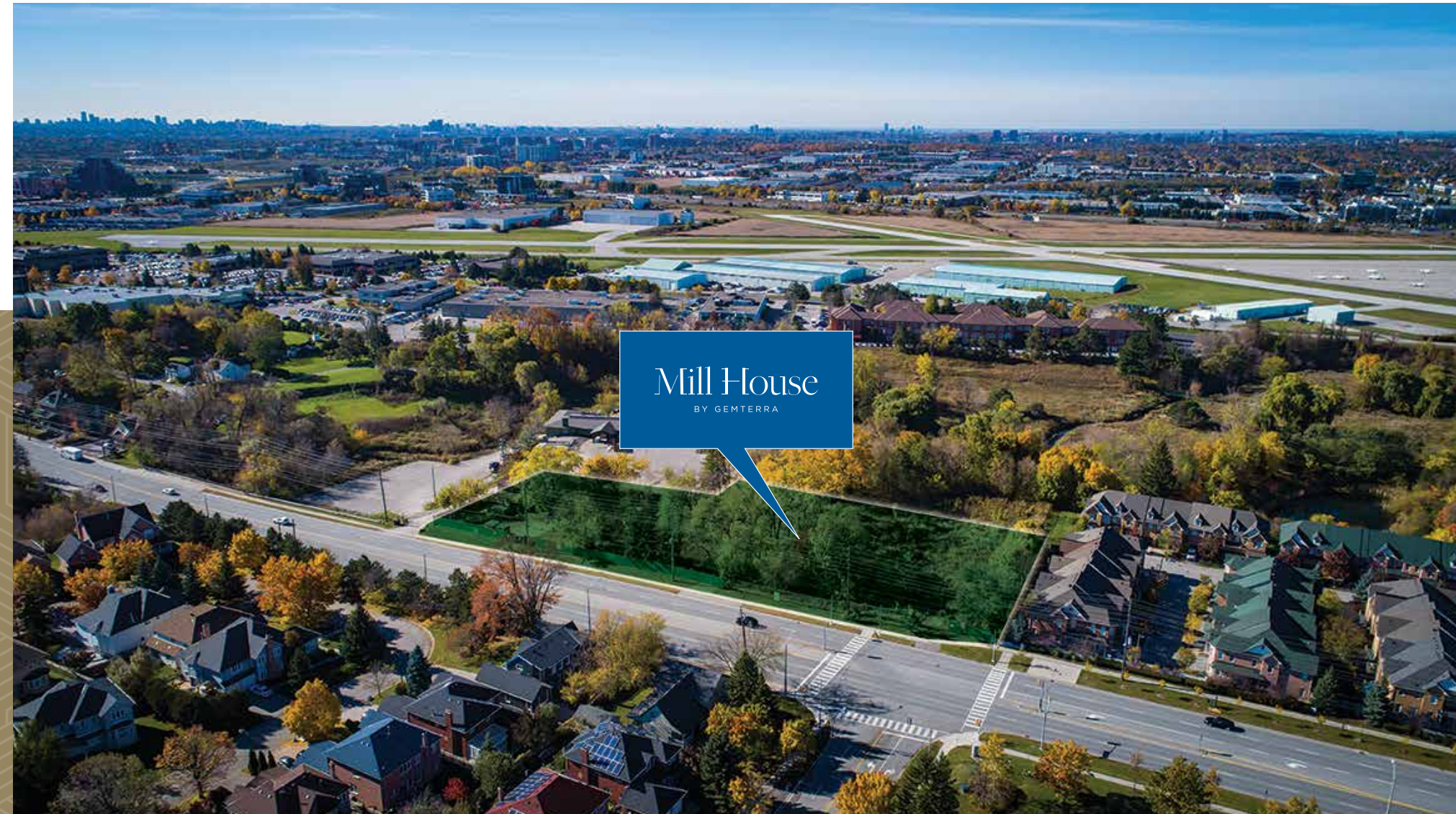


Open concept living and entertaining areas flow seamlessly from one area to another. Gather in the Great Room for cocktails and move into the Dining Room to enjoy the rest of your meal. Surrounded by the rich tones of the engineered hardwood flooring, the soft recessed lighting and your selection of the designer colour palettes, entertaining becomes a warm intimate occasion.

A WORLD AWAY YET MINUTES TO EVERYTHING

In your pursuit of leisure, you will find options for fun and recreation moments away, including the prestigious Angus Glen Golf Club, sports arenas and parks of all sizes. Your location on Woodbine Avenue puts you close to Markham's best in everyday shopping and conveniences. Access to Highways 7, 404 and 407 as well as the Unionville GO station are a breeze. Top notch public and private schools and colleges are close by.

Whenever you're ready, come home to your heritage-inspired townhome in the exclusive Mill House and enjoy secluded luxury together with the daily conveniences of modern living.



VISION WITH PURPOSE MEETS PASSION - THE ORDINARY BECOMES EXTRAORDINARY



Gemterra Developments is a forward-thinking residential and commercial developer with international roots and a rapidly emerging presence in Toronto.

The Gemterra team takes pride in conceiving, creating and delivering quality residential and commercial developments founded on excellent design, smartly conceived floor plans, the finest features and finishes and first-class amenities.

In 2010, after decades as developers and builders overseas, Gemterra expanded into Canada to focus on real estate development, construction, sales, property management and related real estate services.

The company's seasoned senior management assembled a team of leading consultants to design and build, in the heart of the vibrant Scarborough community, Gemterra's first Canadian multi-building high rise residential development - LOVE and JOY Condominiums.

Gemterra's management team combines solid leadership, in-depth industry knowledge and vast professional expertise in architecture, design, property management and real estate and is committed to building exceptional new communities across the Greater Toronto area.

Mill House
BY GEMTERRA

GEMTERRA

www.millhousetowns.com

All renderings are artist's concept. Sizes, materials and specifications are subject to change without notice. E.&O.E.