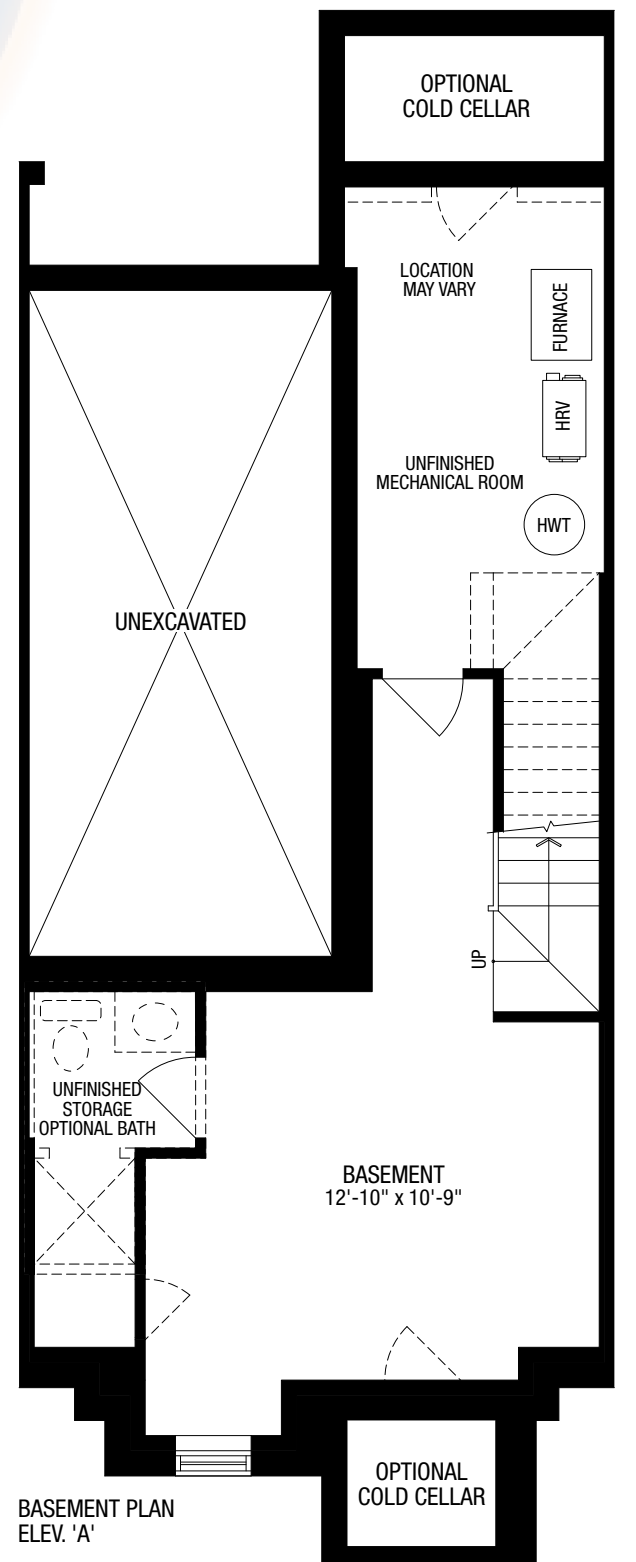
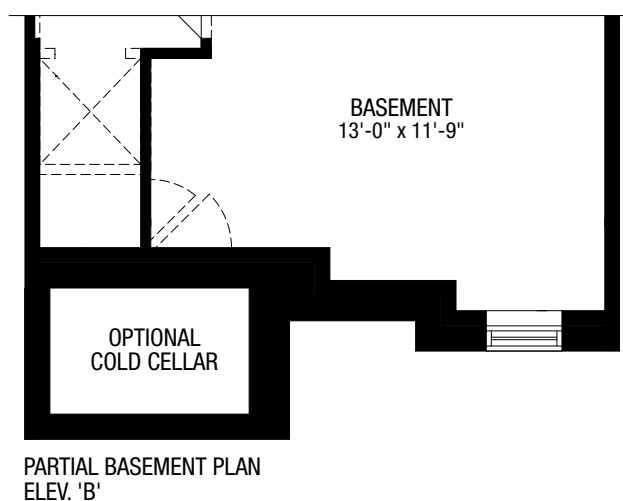
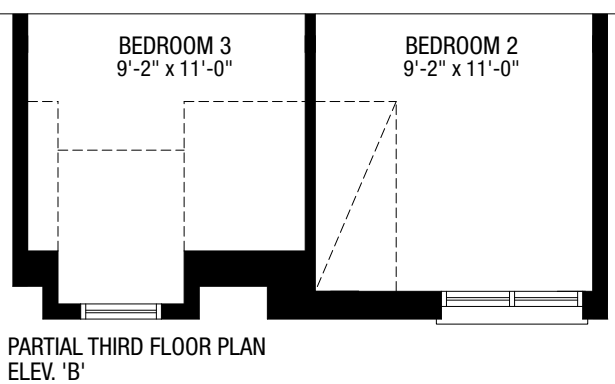
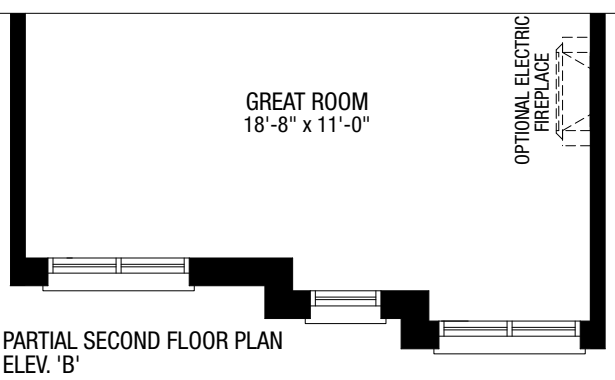
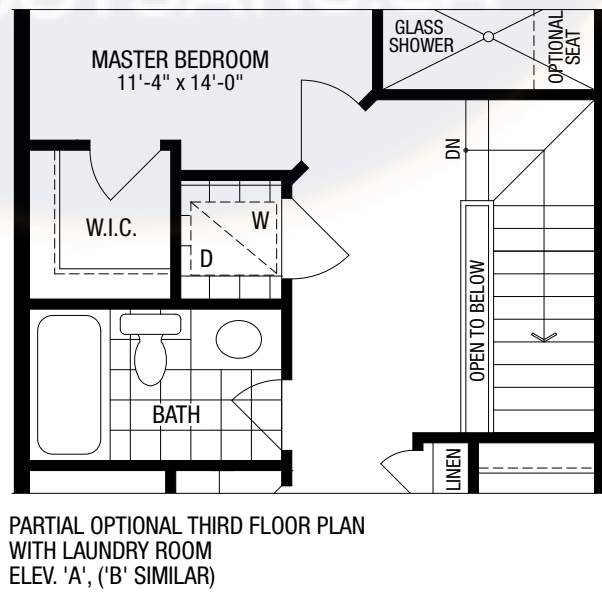
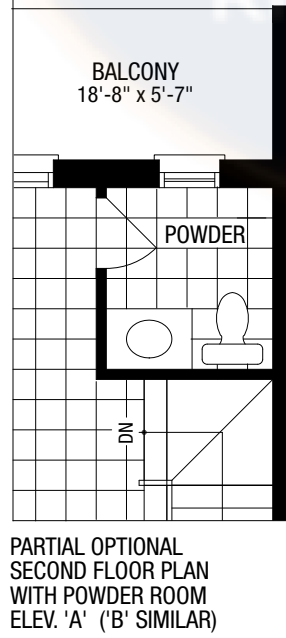
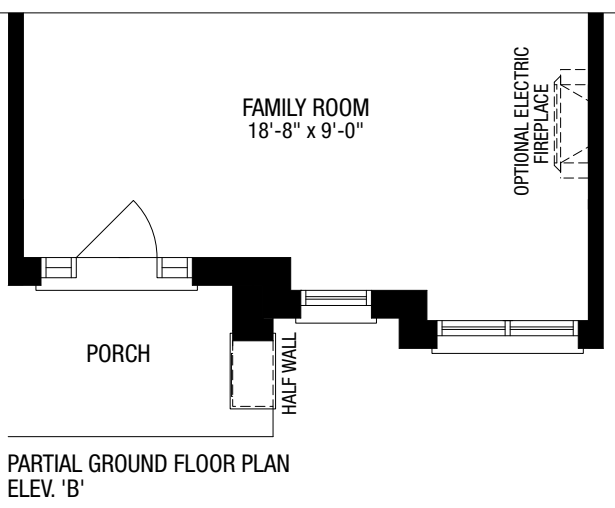
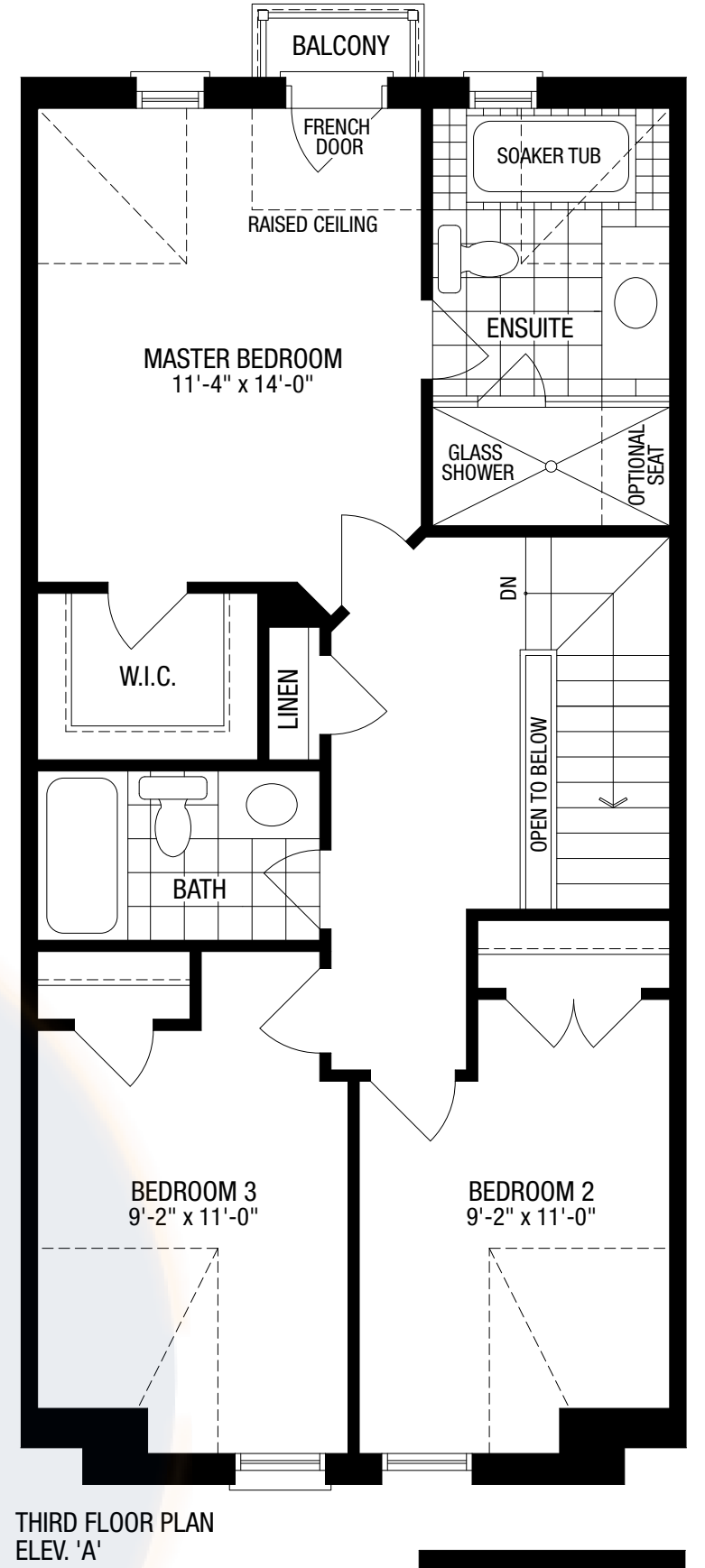
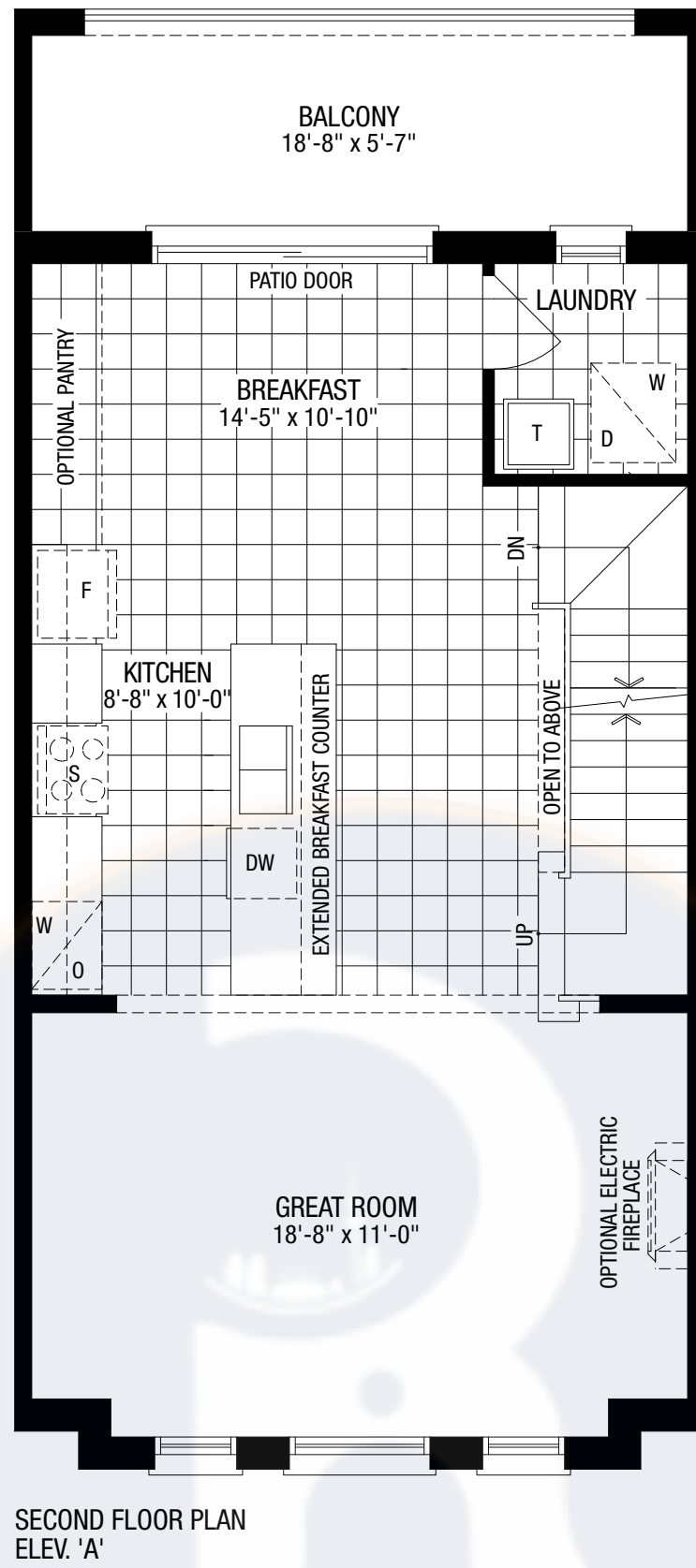
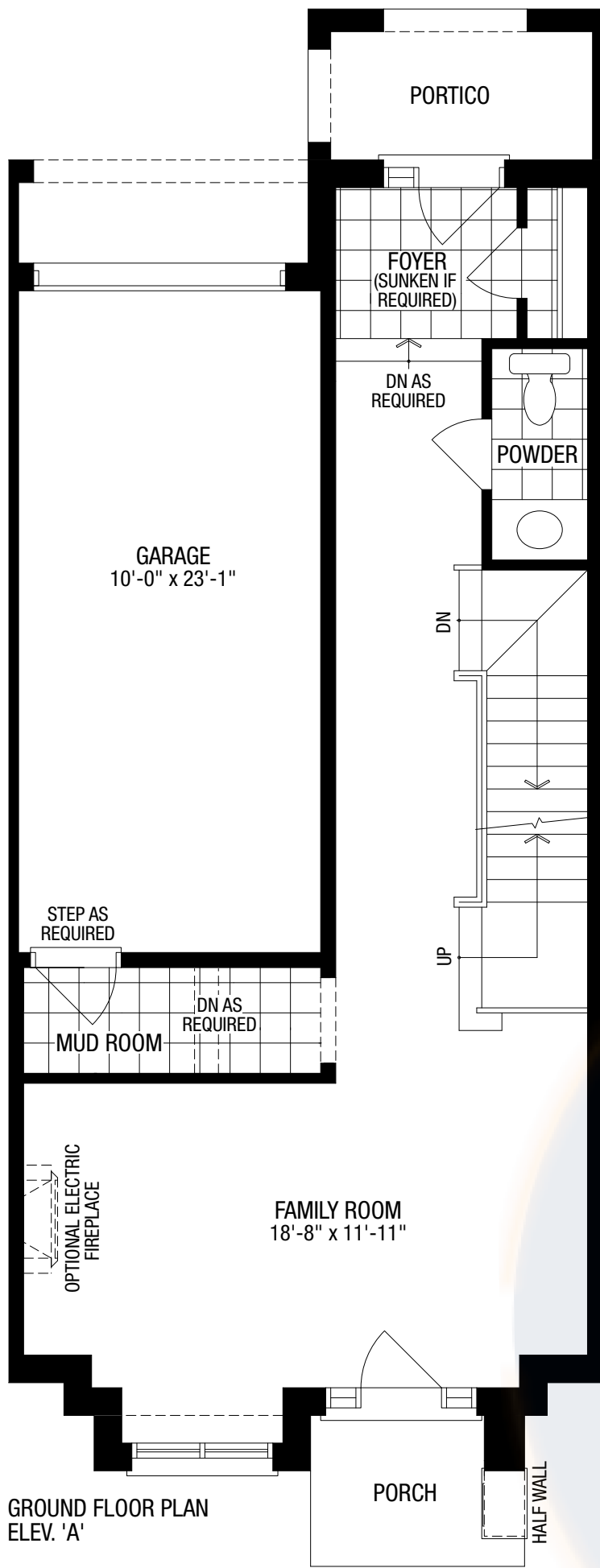
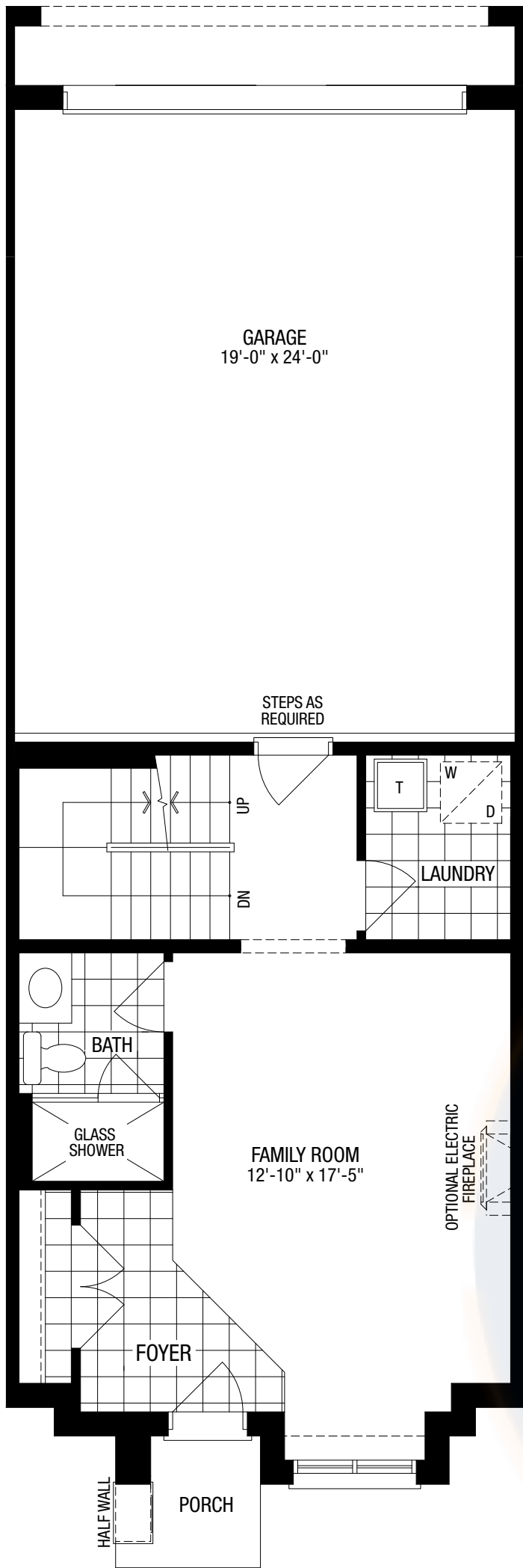


ELEVATOR OPTION AVAILABLE

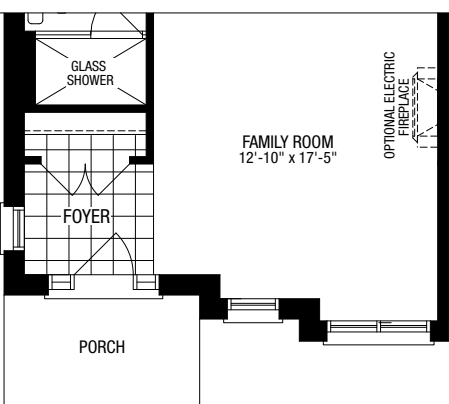


THORNHILL

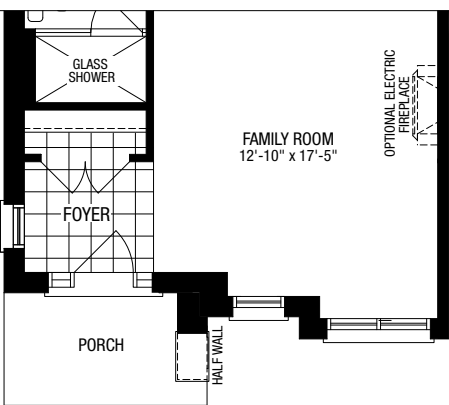
ELEVATION A 2,311 sq.ft. / 333 sq.ft. Basement
ELEVATION B 2,343 sq.ft. / 325 sq.ft. Basement



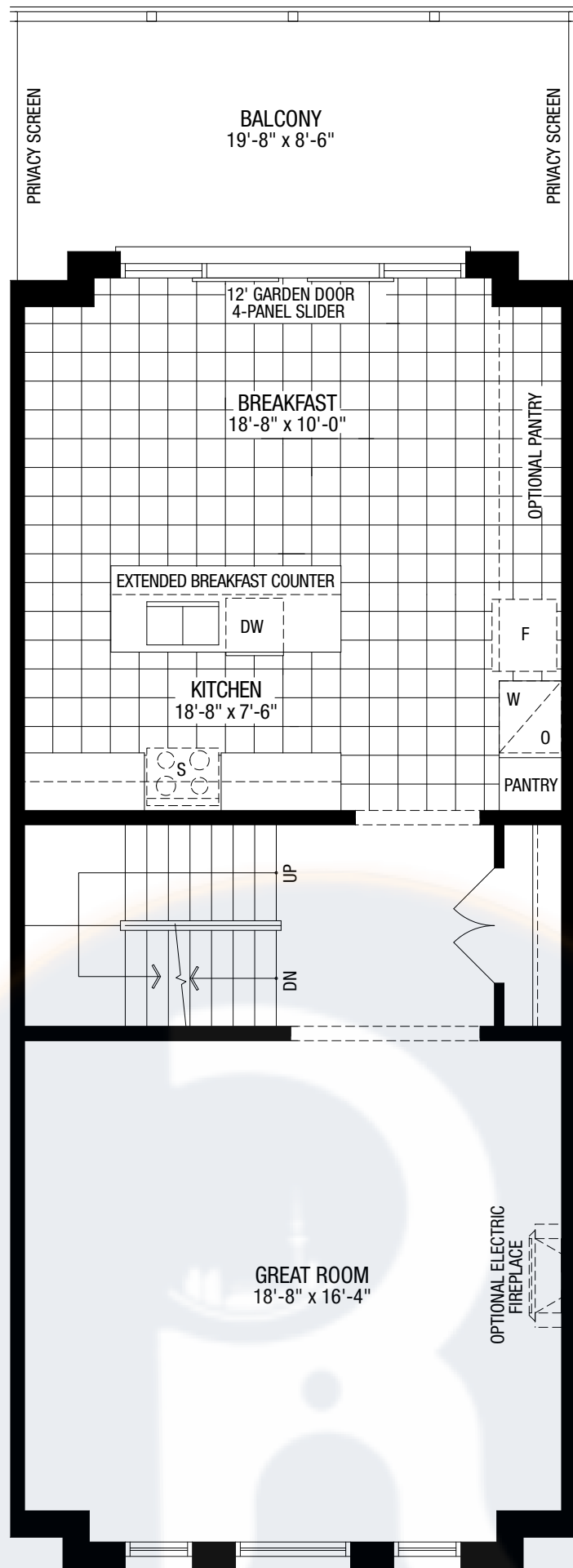
GROUND FLOOR PLAN ELEV. 'A'



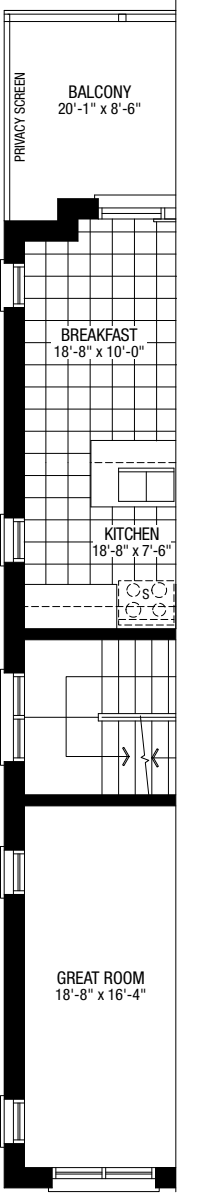
PARTIAL GROUND FLOOR PLAN ELEV. 'B' END UNIT - LOT 8,9



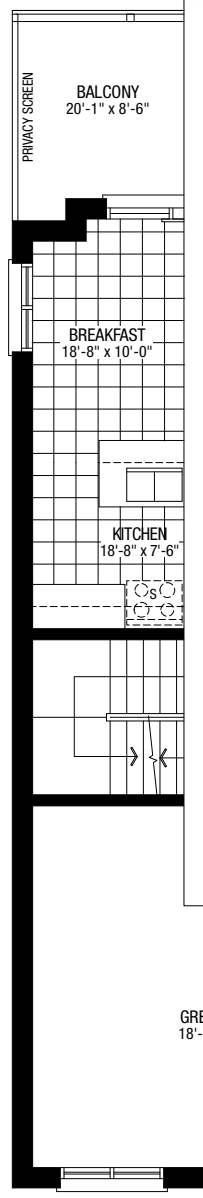
PARTIAL GROUND FLOOR PLAN ELEV. 'B' CORNER UNIT - LOT 1



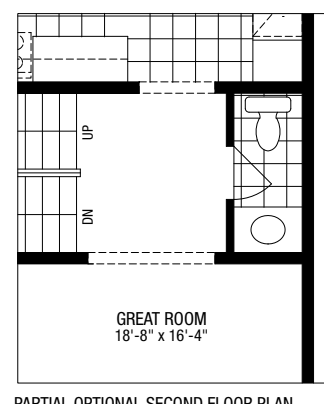
SECOND FLOOR PLAN ELEV. 'A'



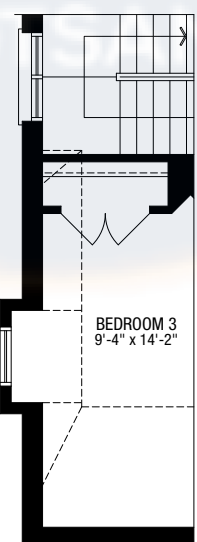
PARTIAL SECOND FLOOR PLAN ELEV. 'B' CORNER UNIT - LOT 1



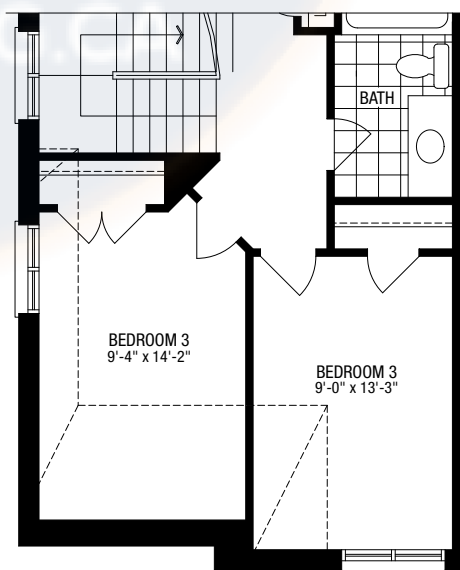
PARTIAL SECOND FLOOR PLAN ELEV. 'B' END UNIT - LOT 8,9



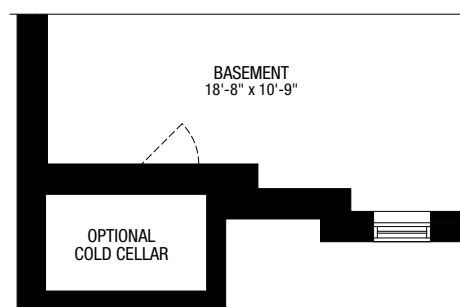
PARTIAL OPTIONAL SECOND FLOOR PLAN WITH POWDER ROOM ELEV. 'A', ('B' SIMILAR)



PARTIAL THIRD FLOOR PLAN ELEV. 'B' CORNER UNIT - LOT 1

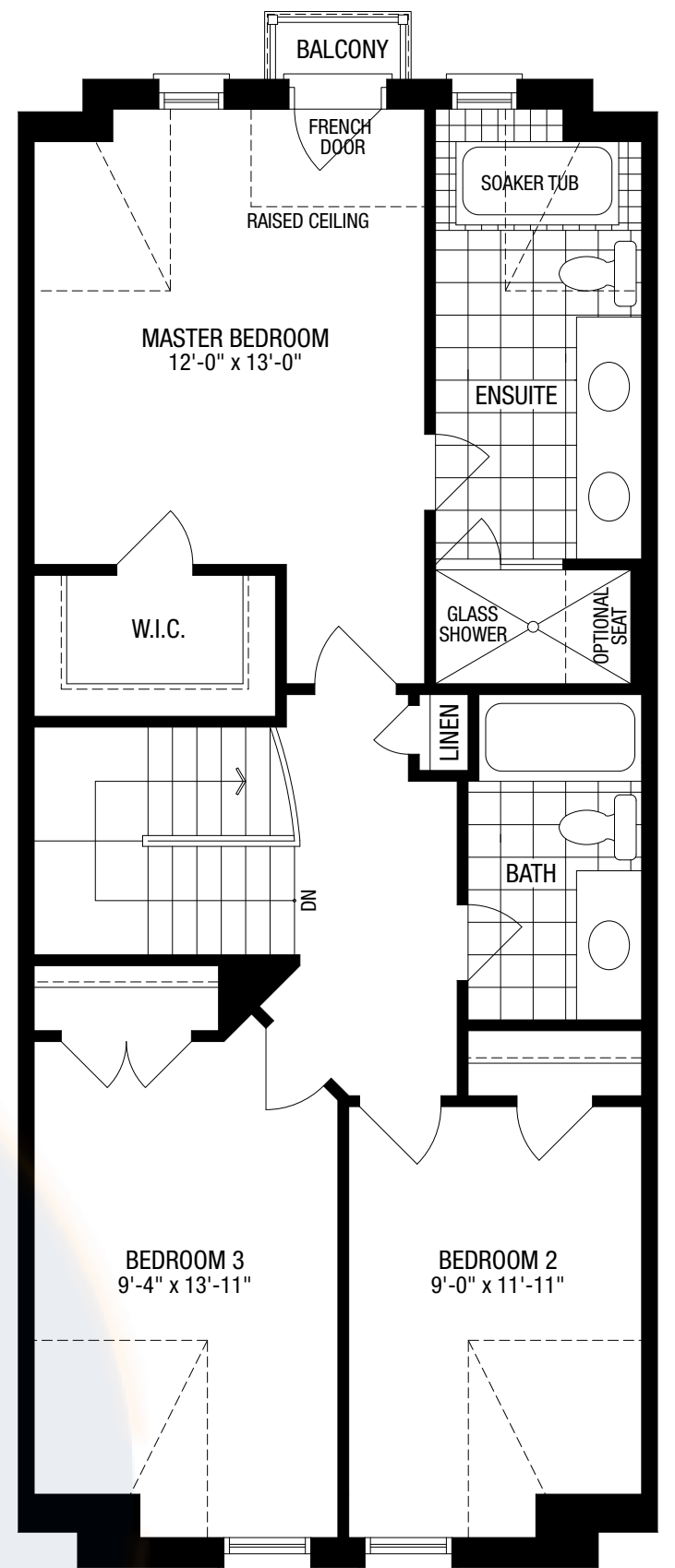


PARTIAL THIRD FLOOR PLAN ELEV. 'B' END UNIT - LOT 8,9

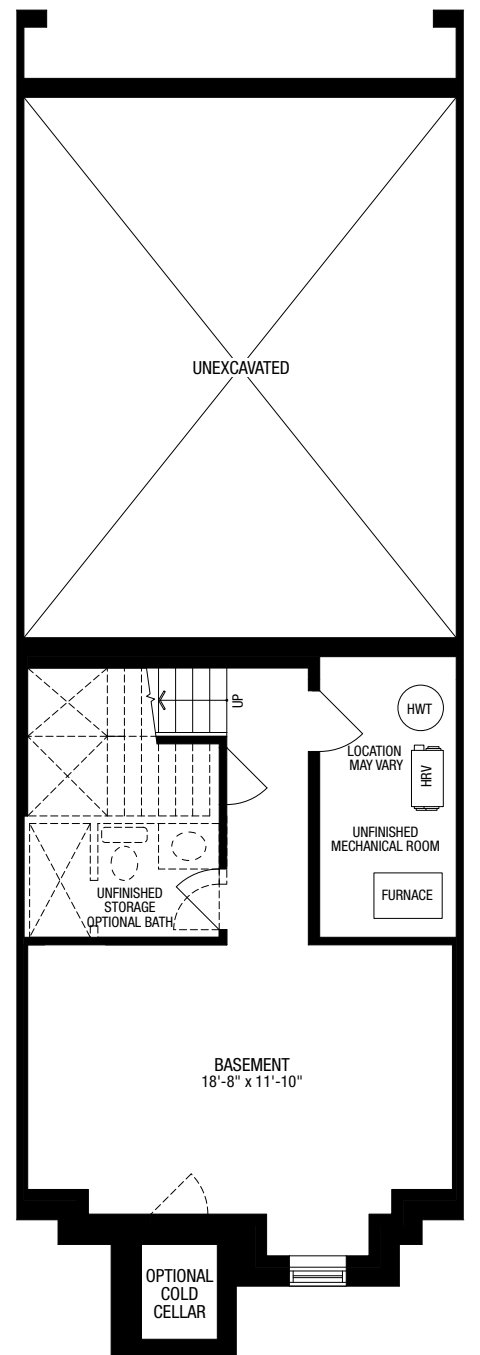


PARTIAL BASEMENT PLAN ELEV. 'B' END UNIT

ELEVATOR OPTION AVAILABLE



THIRD FLOOR PLAN ELEV. 'A'



BASEMENT PLAN ELEV. 'A'

BUTTONVILLE

ELEVATION A 2,946 sq.ft. / 770 sq.ft. Basement
ELEVATION B 2,958 sq.ft. / 770 sq.ft. Basement
ELEVATION C 2,918 sq.ft. / 759 sq.ft. Basement

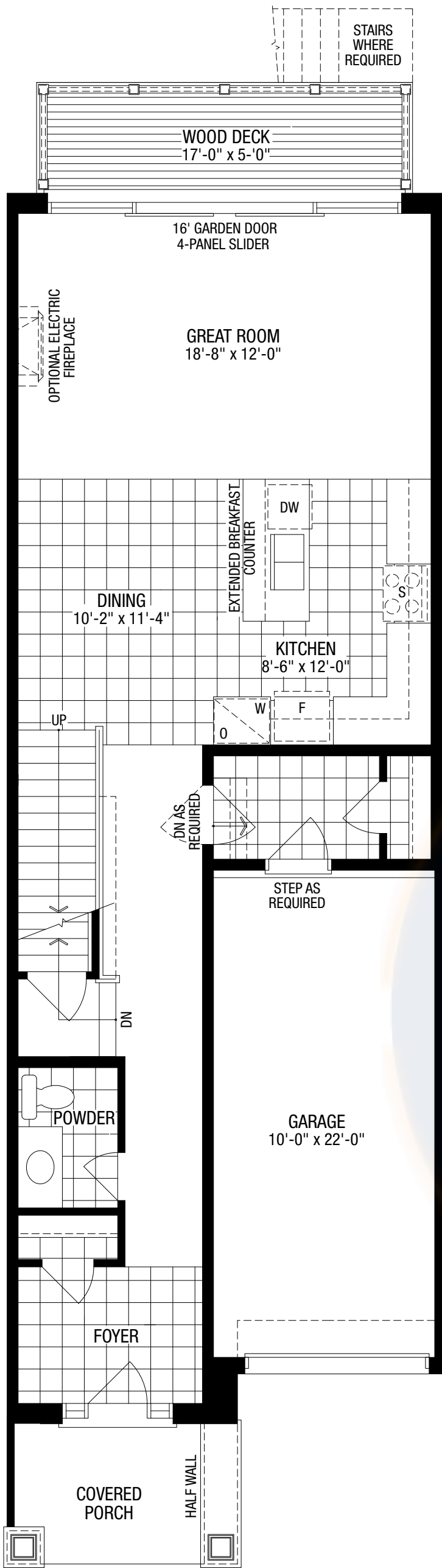
ELEVATOR OPTION AVAILABLE



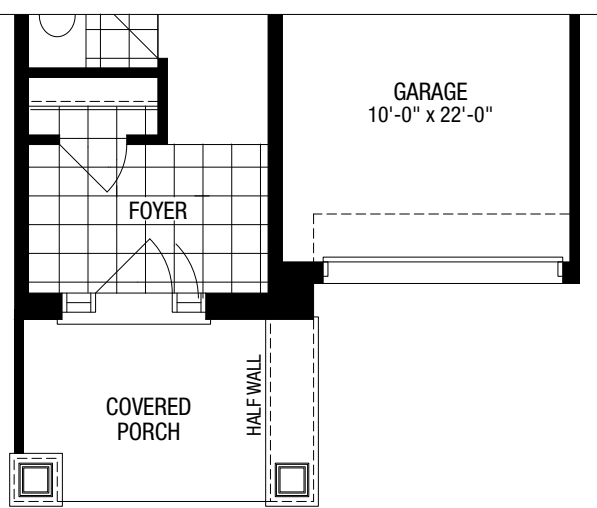
UNIONVILLE

ELEVATION A 2,621 sq.ft. / 611 sq.ft. Basement
ELEVATION B 2,631 sq.ft. / 611 sq.ft. Basement
ELEVATION C 2,594 sq.ft. / 602 sq.ft. Basement

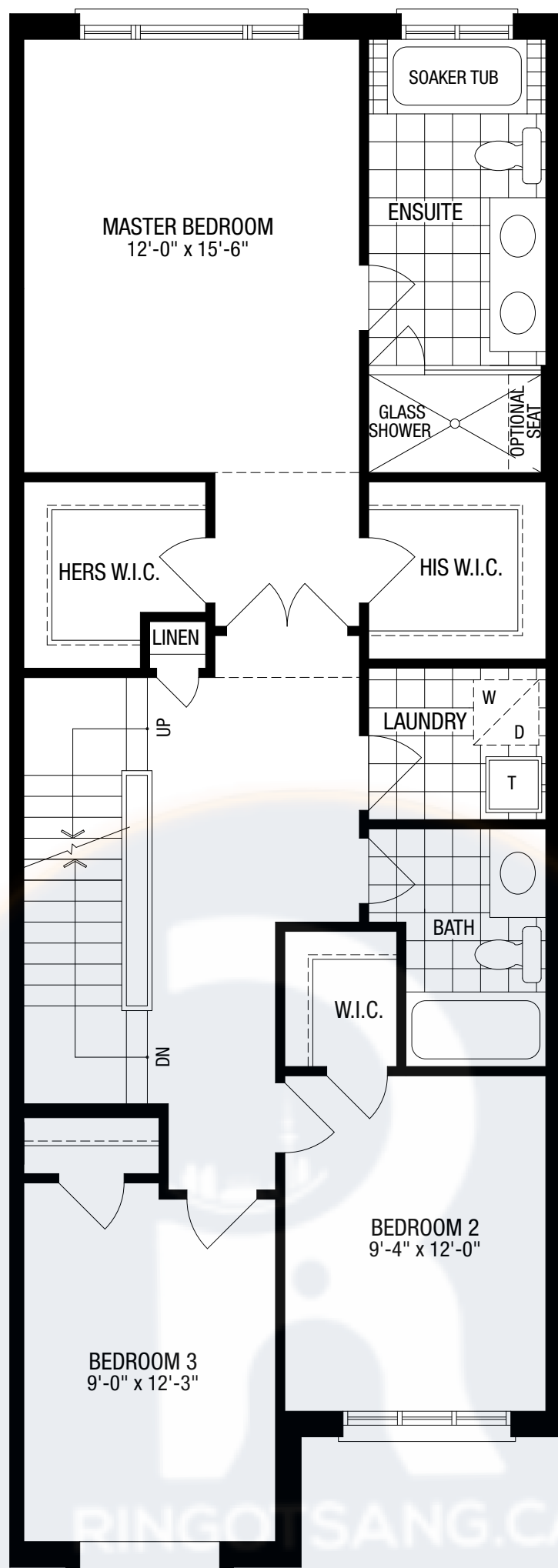
ELEVATOR OPTION AVAILABLE



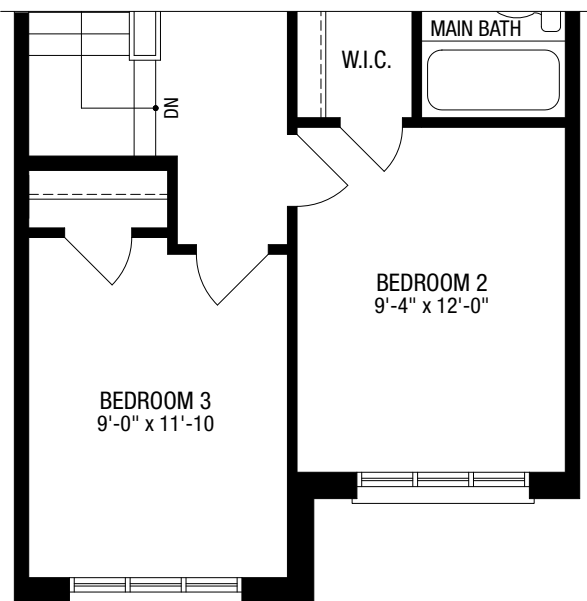
GROUND FLOOR PLAN
ELEV. 'A' & 'B'



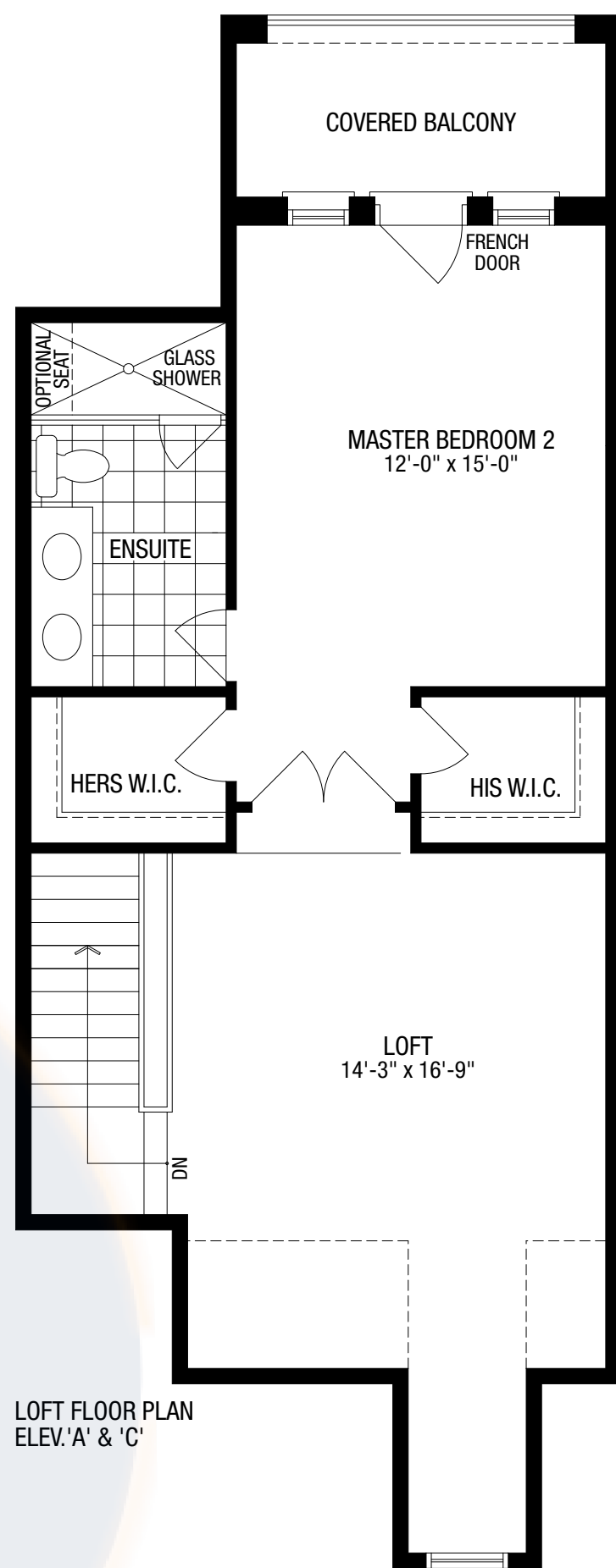
PARTIAL GROUND FLOOR PLAN
ELEV. 'C'



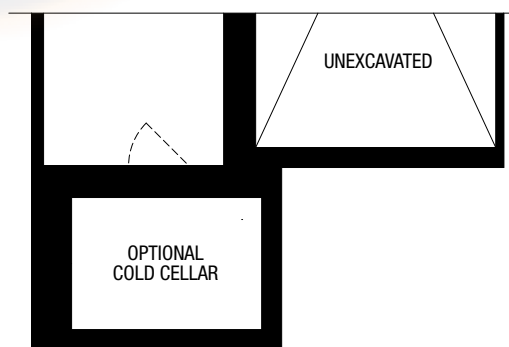
SECOND FLOOR PLAN
ELEV. 'A' & 'B'



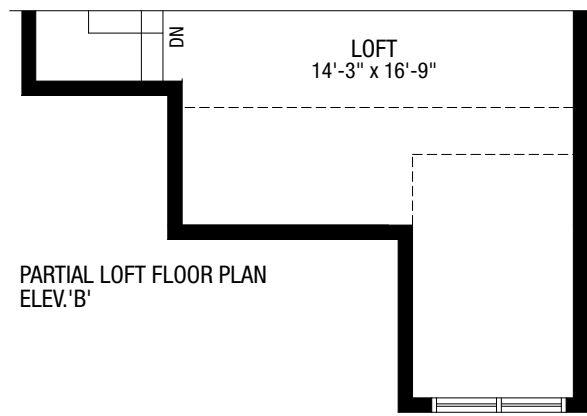
PARTIAL SECOND FLOOR PLAN
ELEV. 'C'



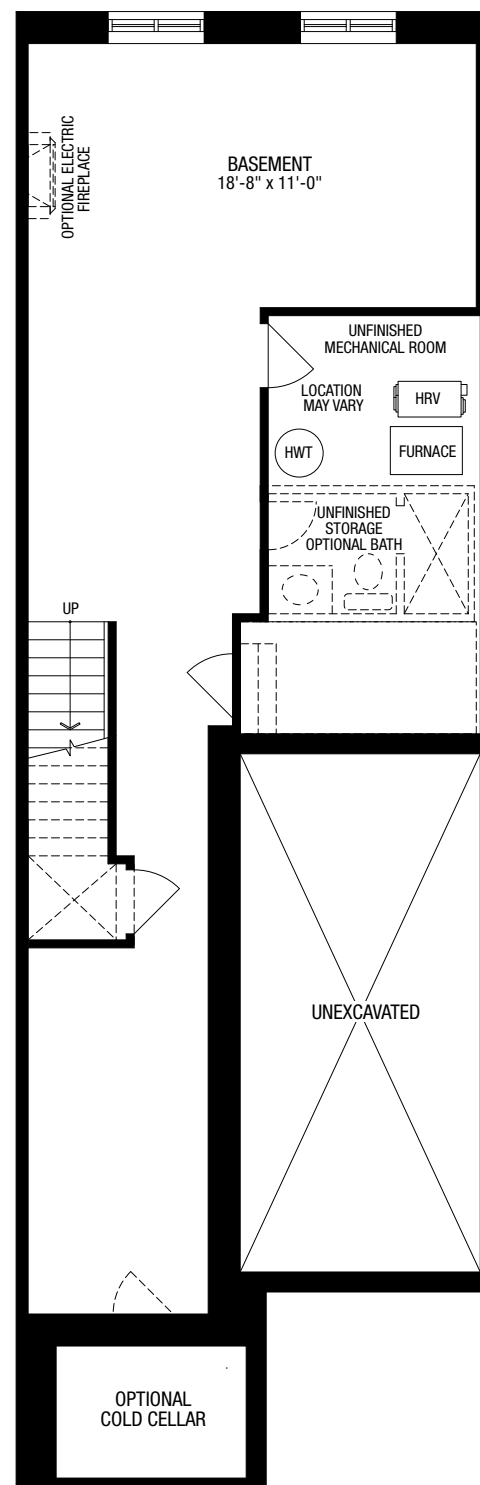
LOFT FLOOR PLAN
ELEV. 'A' & 'C'



PARTIAL BASEMENT PLAN
ELEV. 'C'



PARTIAL LOFT FLOOR PLAN
ELEV. 'B'



BASEMENT PLAN
ELEV. 'A' & 'B'