



TRENDI

TOWNS IN MARKHAM

NGO G.CA

STYLISH URBAN



TOWN LIVING



Treasure Hill's latest community, **Trendi Towns**, will boast stylish living in a fantastic location. A selection of townhomes will be offered at this new community, with two car garage towns.



RINGOTSANG.CA

Both chic and sophisticated,
these new homes in Markham will
showcase Treasure Hill's stunning
design aesthetic, desirable features
and expert craftsmanship.



RINGOTSANG.CA

LIVE
OWN
TREND

LIFE IS CHIC IN MARKHAM

MARKVILLE MALL

GO STATION

MARKVILLE
SECONDARY SCHOOL

SITE

16th Ave.

RINGOTSANGCA



Situated at McCowan Road and 16th Avenue, Trendi Towns is in a sought-after area in Markham, near an array of restaurants, shops and schools. You will find many beautiful nearby parks with numerous scenic pathways just waiting to be explored. Markham's popular attractions, Main Street Unionville and Main Street Markham, are a short drive away with both offering unique shopping and dining experiences.

FUTURE YORK
UNIVERSITY CAMPUS

McCowan Rd.

RINGOTSANG.CA





ANGUS GLEN
GOLF CLUB

9

MAJOR MACKENZIE DRIVE

12

WARDEN AVENUE

11

12

KENNEDY ROAD

11

9

10

10

MCCOWAN ROAD

YORK DOWNS
GOLF & COUNTRY
CLUB

8

14

15

8

SITE

16TH AVENUE

5

6

6

7

7

RINGOTSANG.CA

HIGHWAY 7



4

7

6

8

10

11

4

12

13



3

9



TRENDI

TOWNS IN MARKHAM

DINING + ENTERTAINMENT

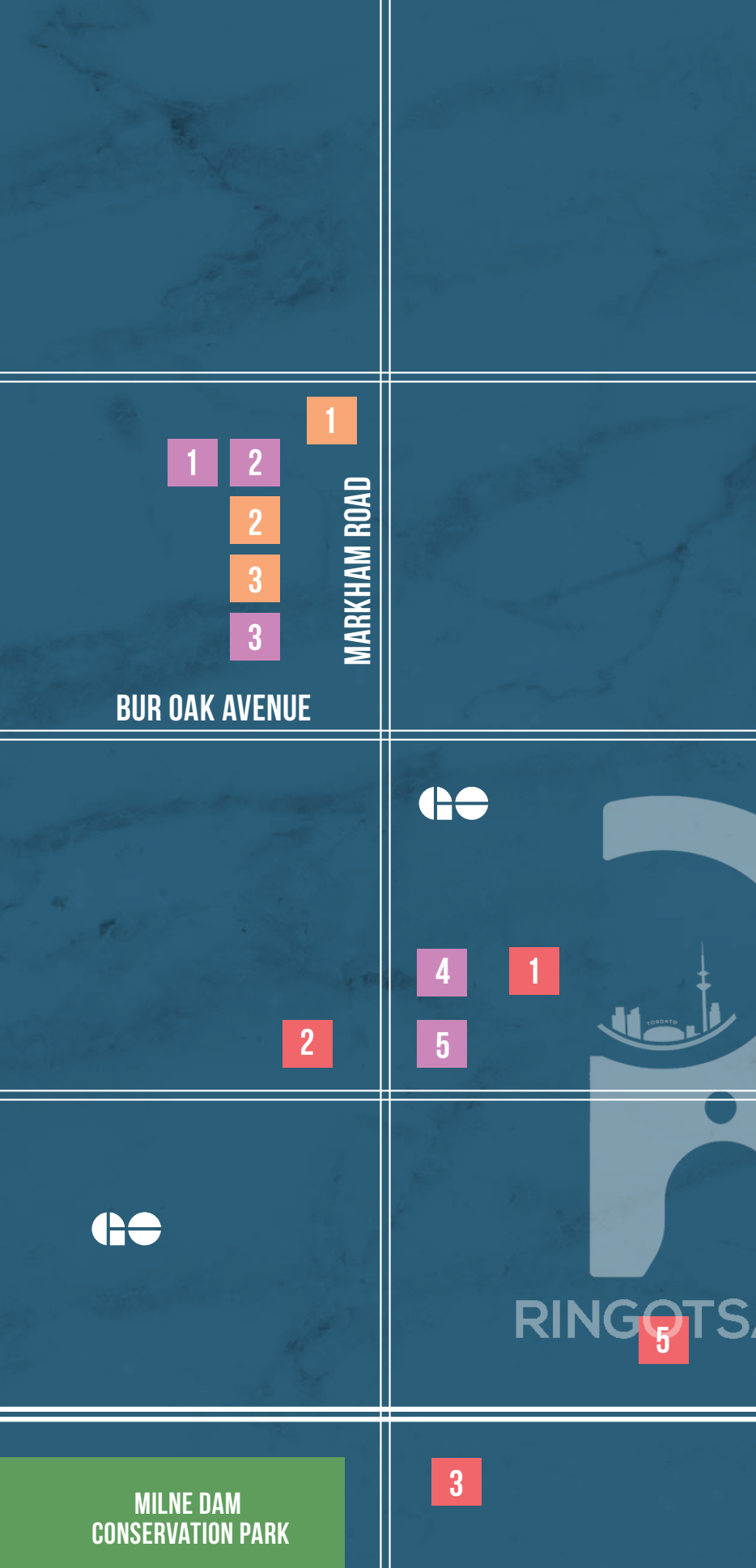
1. WENDY'S
2. POPEYES
3. TAO CANTEEN
4. PANERA BREAD
5. JAKES ON MAIN
6. UNIONVILLE ARMS PUB + GRILL
7. OLD FIREHALL CONFECTIONERY
8. GEORGE'S TASTEE
9. PIZZA NOVA
10. PHO METRO
11. SYMPOSIUM
12. WILD WING

SHOPPING

1. FOOD BASICS
2. PETSMART
3. HOME DEPOT
4. DOLLARAMA
5. THE GARDEN BASKET FOOD MARKETS
6. MARSHALLS
7. LOBLAWS
8. LCBO
9. BEER STORE
10. CF MARKVILLE
11. WALMART
12. WHOLE FOODS MARKET
13. BED BATH AND BEYOND
14. FRESHCO
15. SHOPPERS DRUG MART

COMMUNITY + SCHOOLS

1. BROTHER ANDRÉ CATHOLIC HIGH SCHOOL
2. MARKHAM MUSEUM
3. MARKHAM VILLAGE COMMUNITY CENTRE
4. CENTENNIAL COMMUNITY CENTRE
5. MARKHAM DISTRICT HIGH SCHOOL
6. UNIONVILLE LIBRARY
7. MARKHAM CIVIC CENTRE
8. STONEBRIDGE PUBLIC SCHOOL
9. ANGUS GLEN COMMUNITY CENTRE
10. PIERRE ELLIOTT TRUDEAU HIGH SCHOOL
11. JOHN MCCRAE PUBLIC SCHOOL
12. MARKHAM FAIRGROUNDS





TRAIL RIDGE LANE

MCCOWAN ROAD

MARIA ROAD

RINGOTSANG.COM



TRENDI

TOWNS IN MARKHAM



LEGEND

- 18' REAR LOADED TOWNS
2 CAR GARAGE
- 18' FRONT LOADED TOWNS
1 CAR GARAGE

NOTE: Orientation of home may be reversed and purchaser agrees to accept the same. Steps may vary at any exterior entrance ways due to grading variance. Actual usable floor space may vary from stated floor area. All renderings are artist's concept. Dimensions, specifications, architectural and mechanical detailing are subject to minor modifications. Unit setback and roofline may vary due to siting. E. & O.E.

F1

2,039 sq.ft.

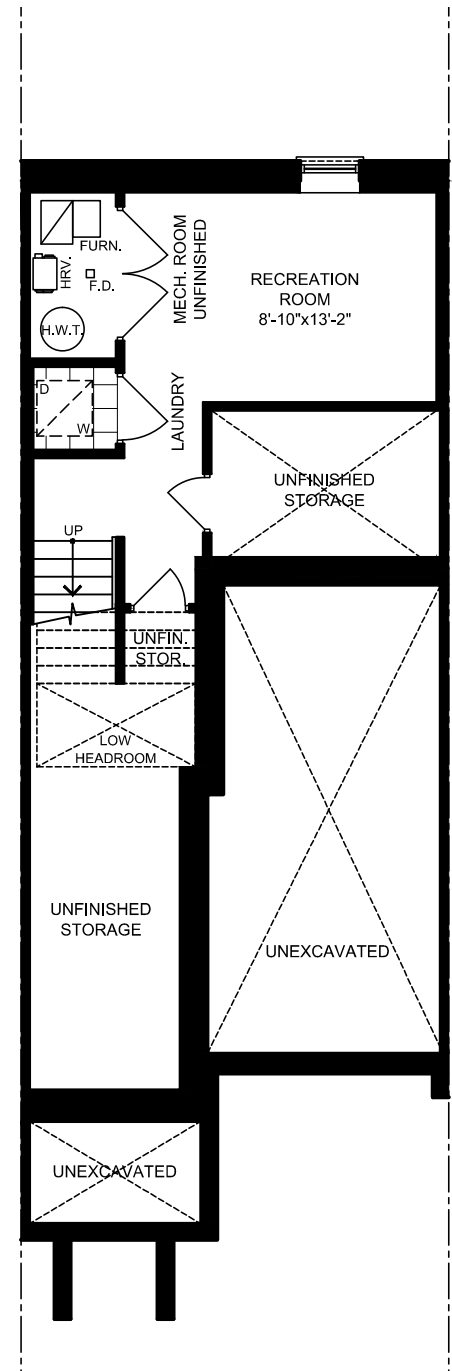
INCLUDES 217 SQ.FT. OF FINISHED
BASEMENT & 16 SQ.FT. OF OPEN AREA



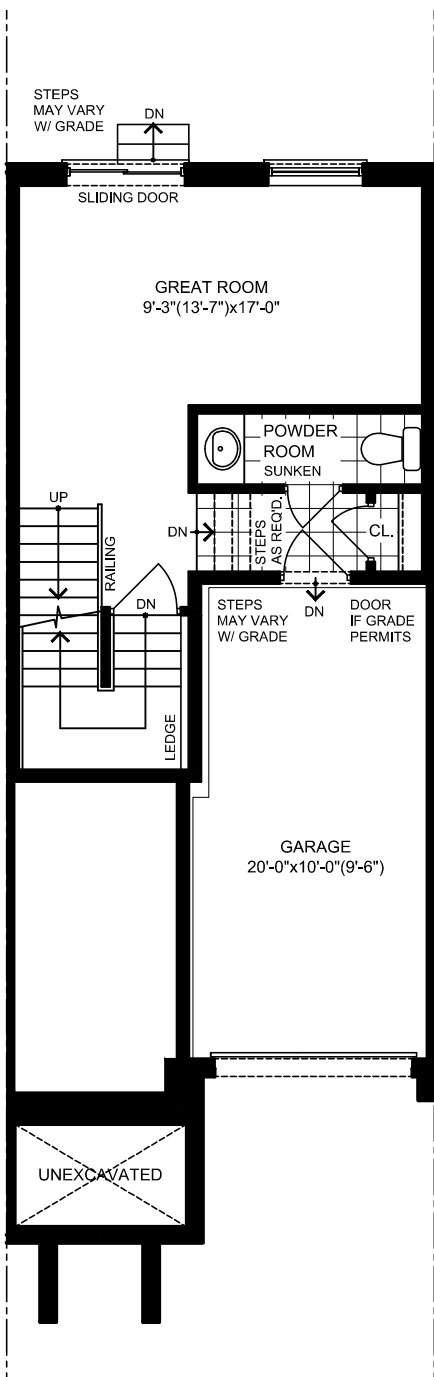
ELEV. A



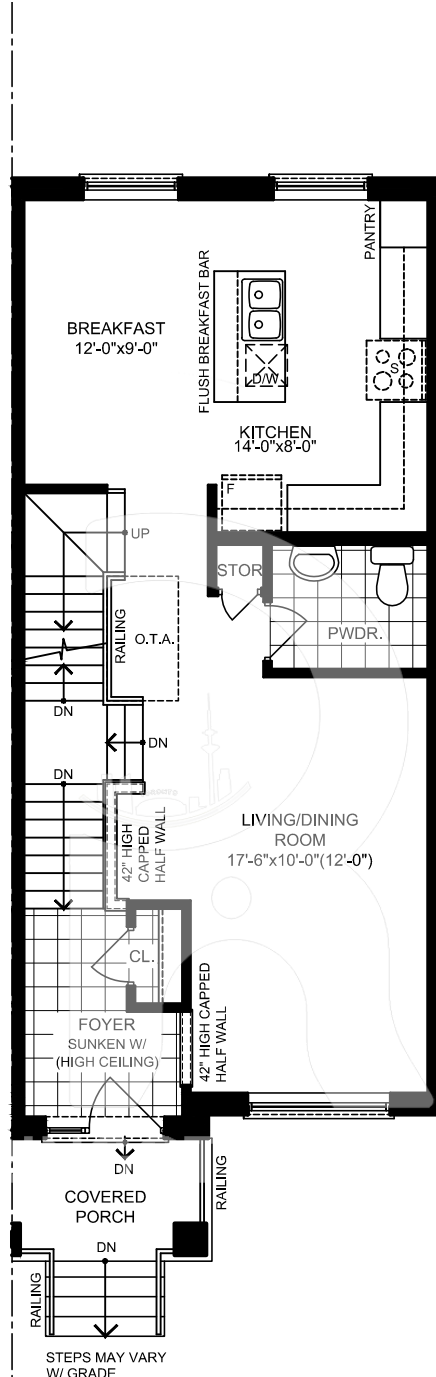
ELEV. B



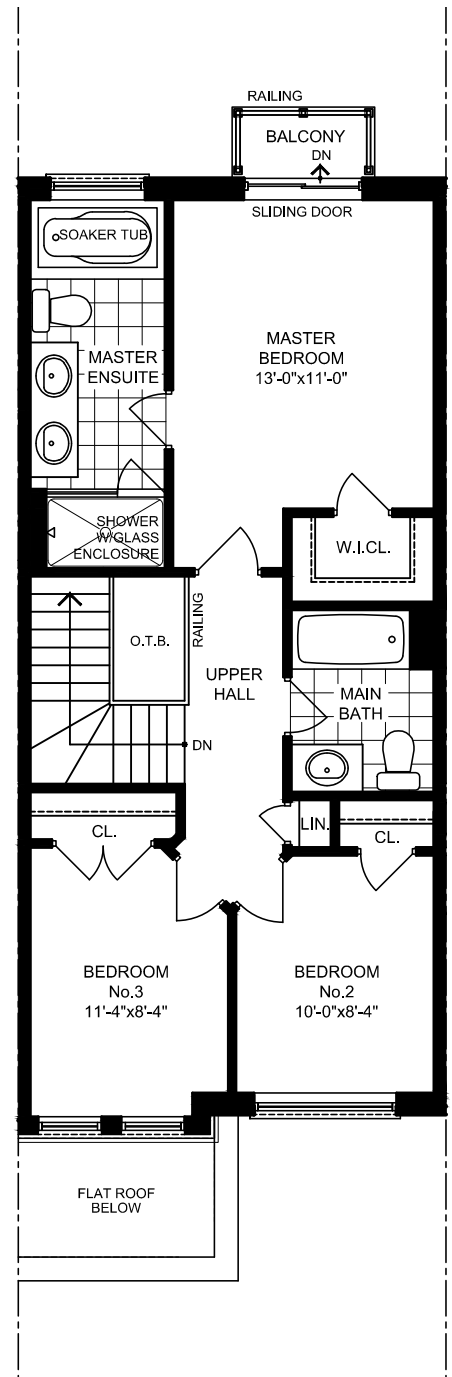
ELEV. A & B
Basement



ELEV. A & B
Ground Floor



ELEV. A & B
Main Floor



ELEV. A & B
Second Floor

F2

2,246 sq.ft.

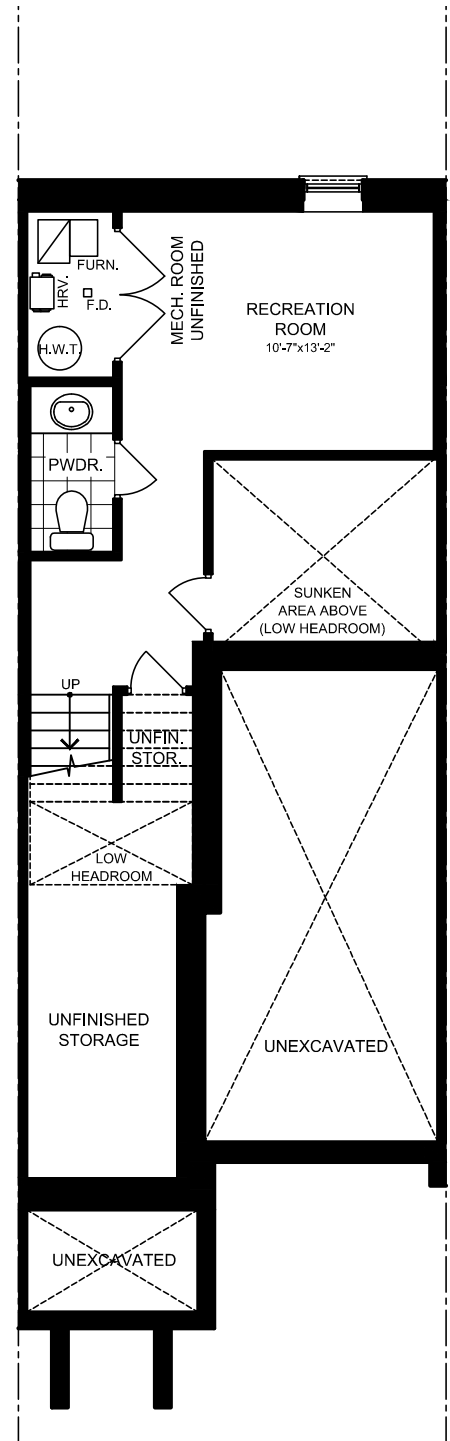
INCLUDES 257 SQ.FT. OF FINISHED
BASEMENT & 8 SQ.FT. OF OPEN AREA



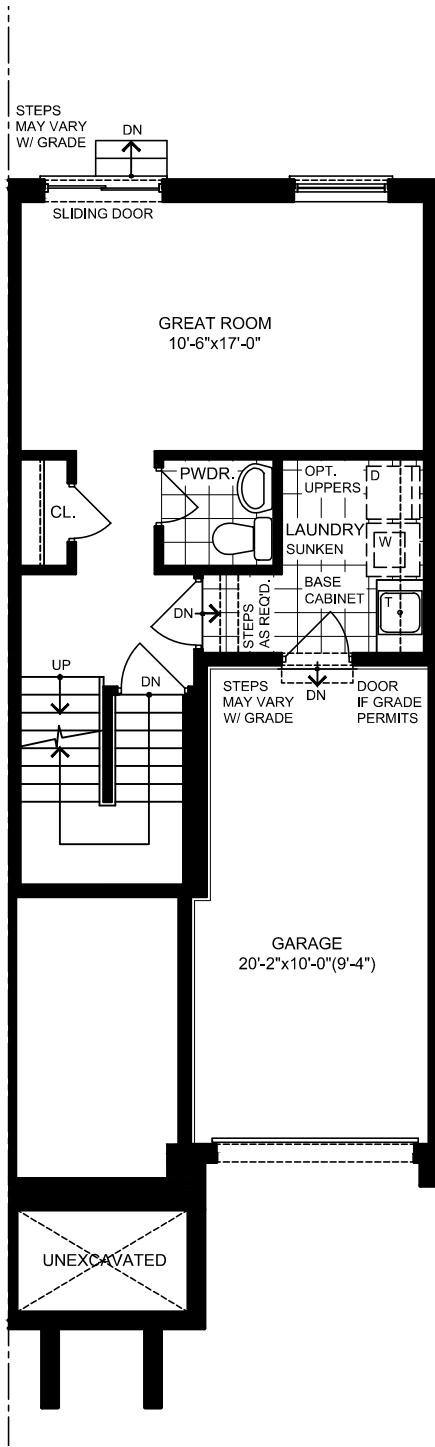
ELEV. A



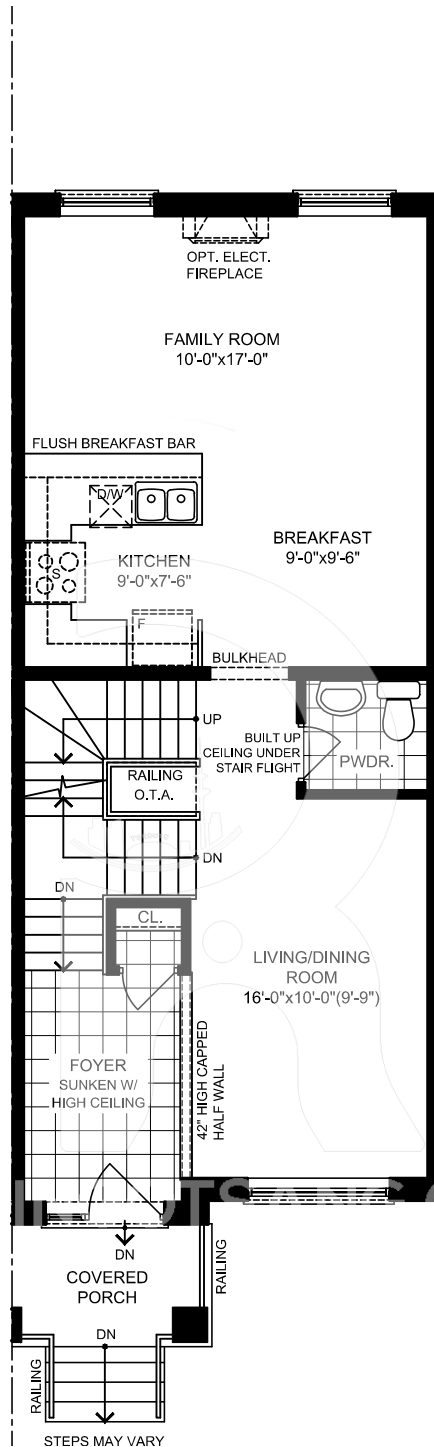
ELEV. B



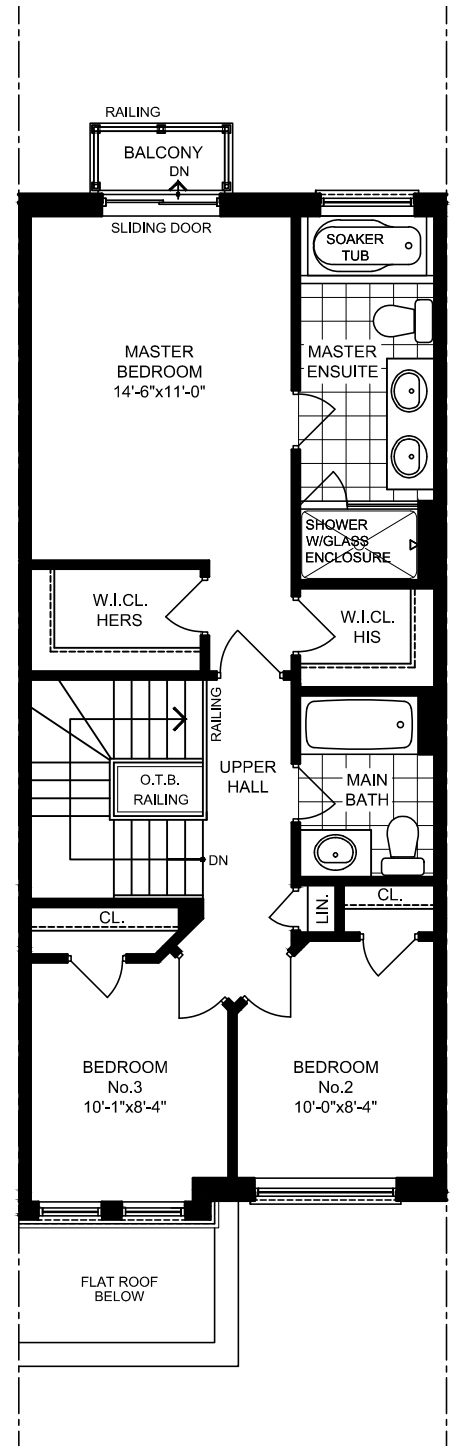
ELEV. A & B
Basement



ELEV. A & B
Ground Floor



ELEV. A & B
Main Floor



ELEV. A & B
Second Floor

F3

2,317 sq.ft.

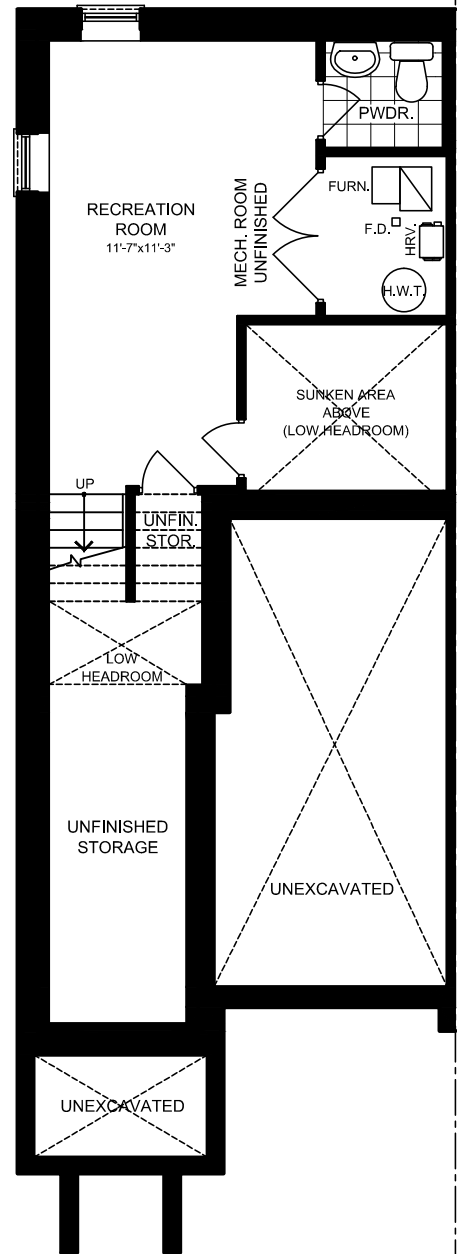
INCLUDES 259 SQ.FT. OF FINISHED
BASEMENT & 3 SQ.FT. OF OPEN AREA



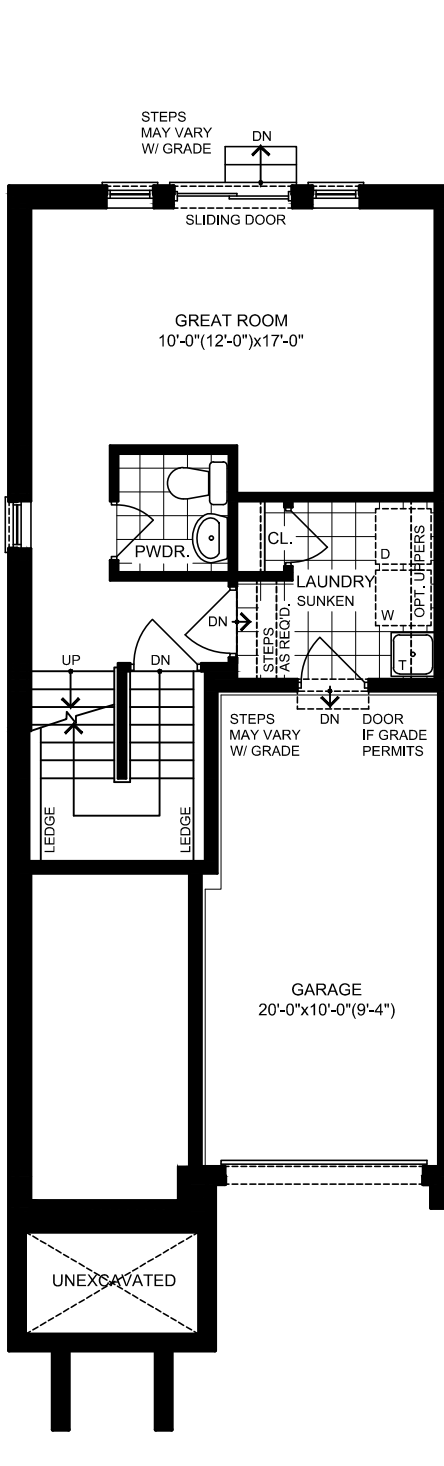
ELEV. A



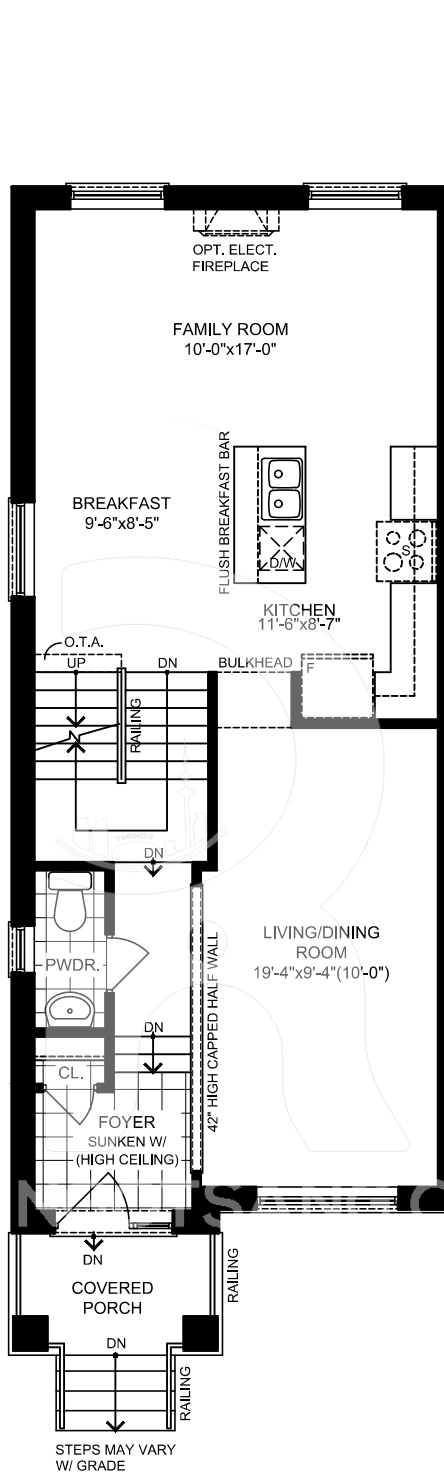
ELEV. B



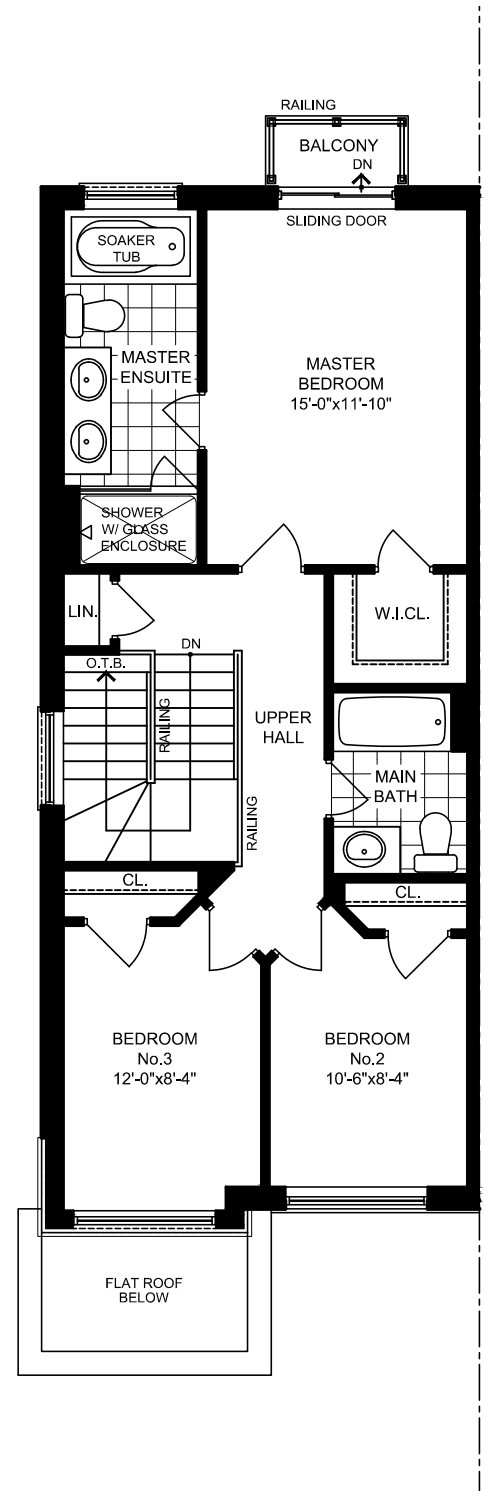
ELEV. A & B
Basement



ELEV. A & B
Ground Floor



ELEV. A & B
Main Floor



ELEV. A & B
Second Floor

F4

2,522 sq.ft.

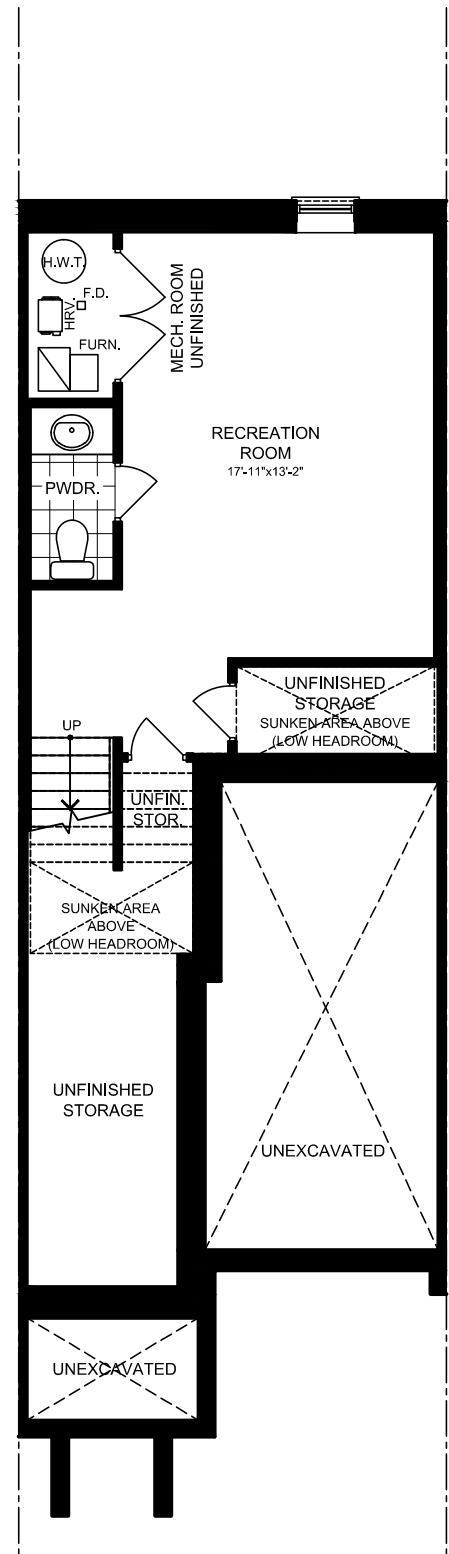
INCLUDES 350 SQ.FT. OF FINISHED
BASEMENT & 8 SQ.FT. OF OPEN AREA



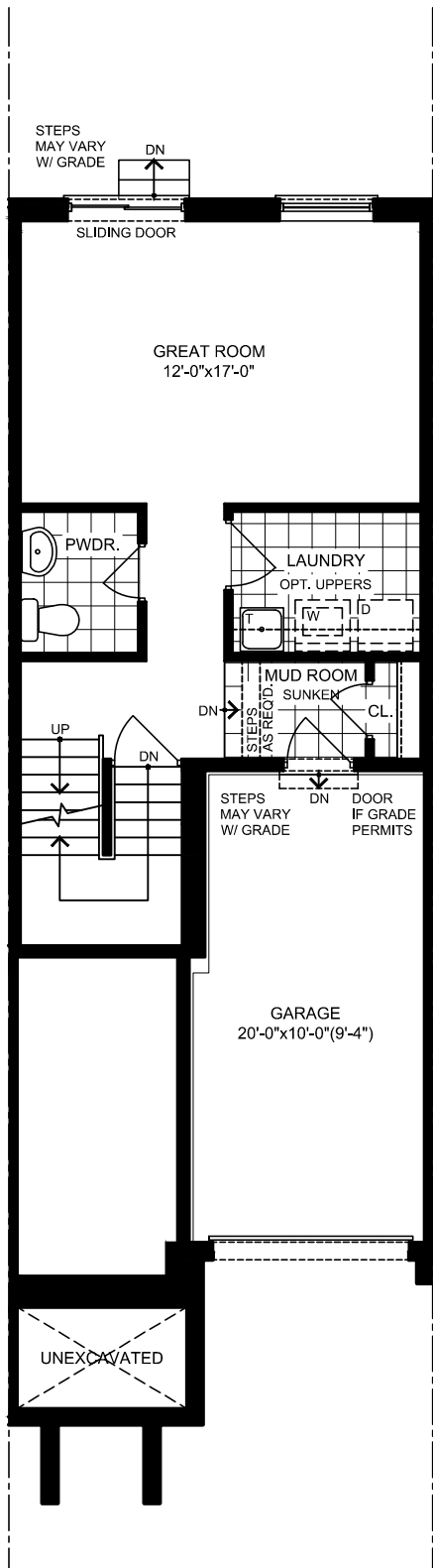
ELEV. A



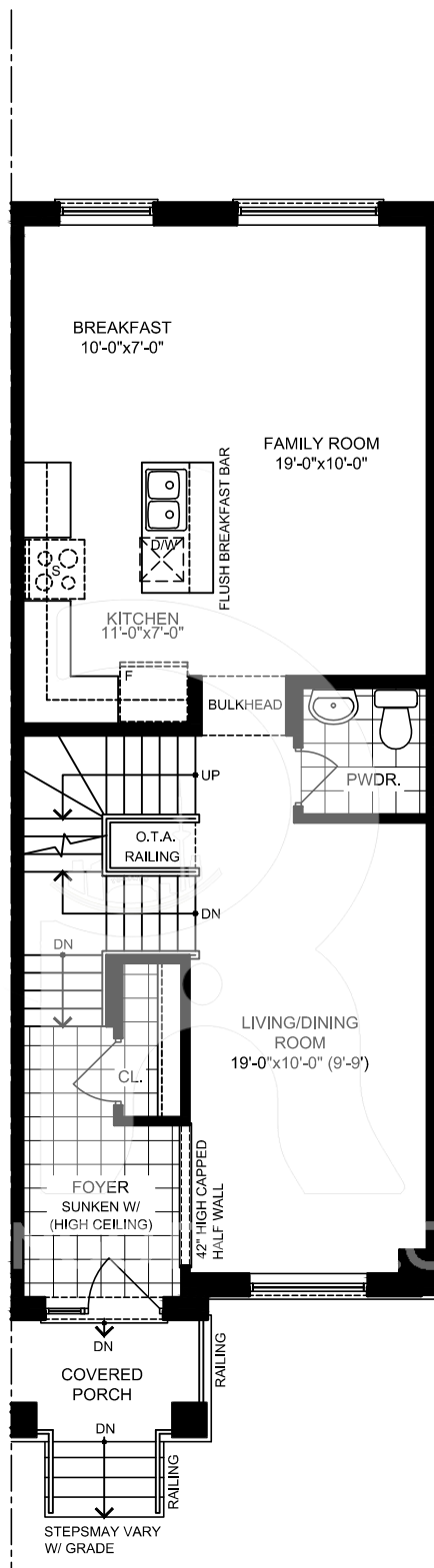
ELEV. B



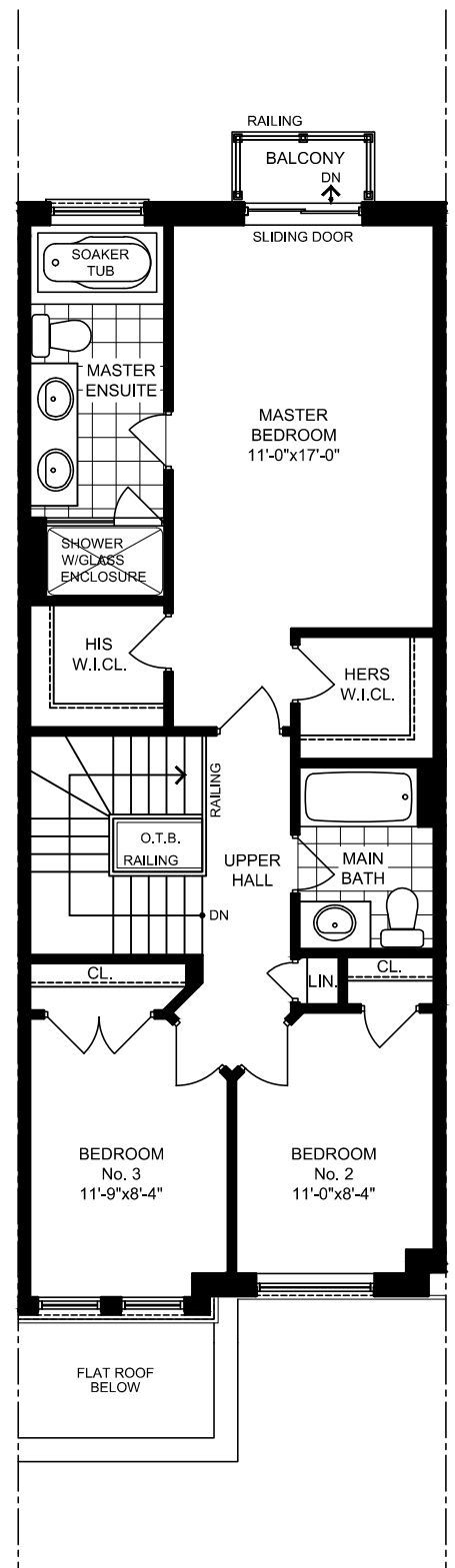
ELEV. A & B
Basement



ELEV. A & B
Ground Floor



ELEV. A & B
Main Floor



ELEV. A & B
Second Floor

F5

2,909 sq.ft.

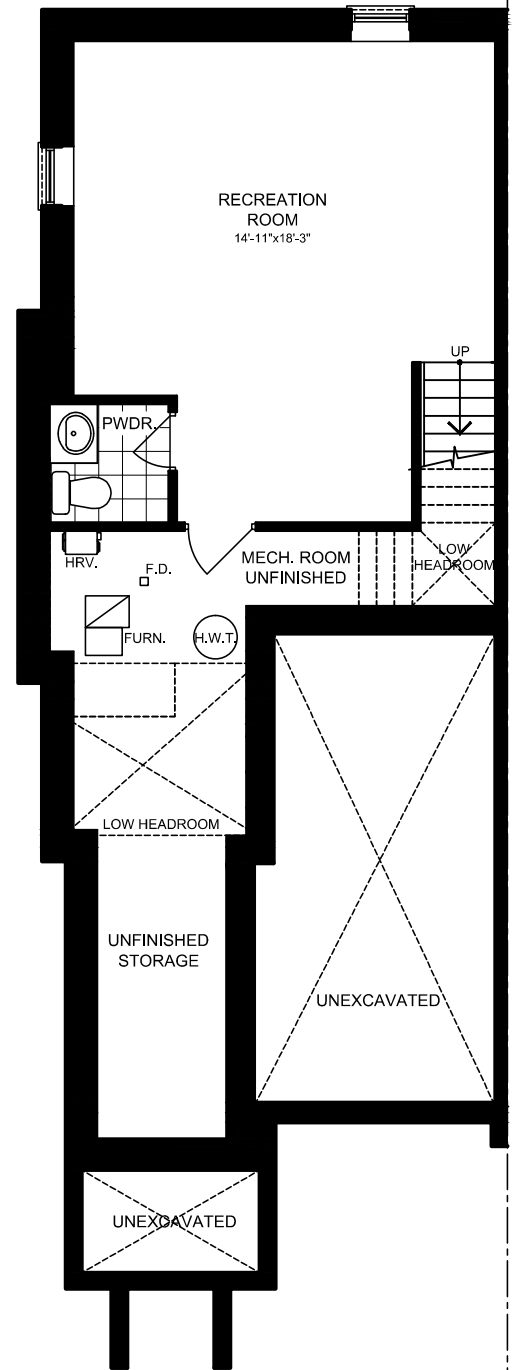
INCLUDES 396 SQ.FT. OF FINISHED
BASEMENT & 20 SQ.FT. OF OPEN AREA



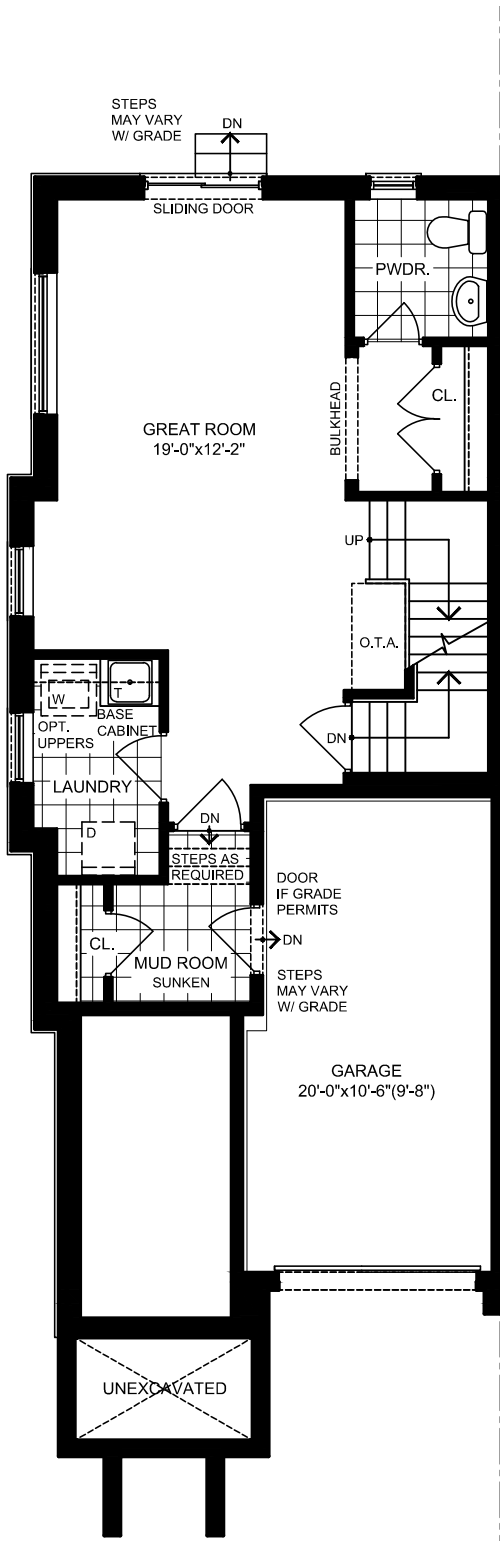
ELEV. A



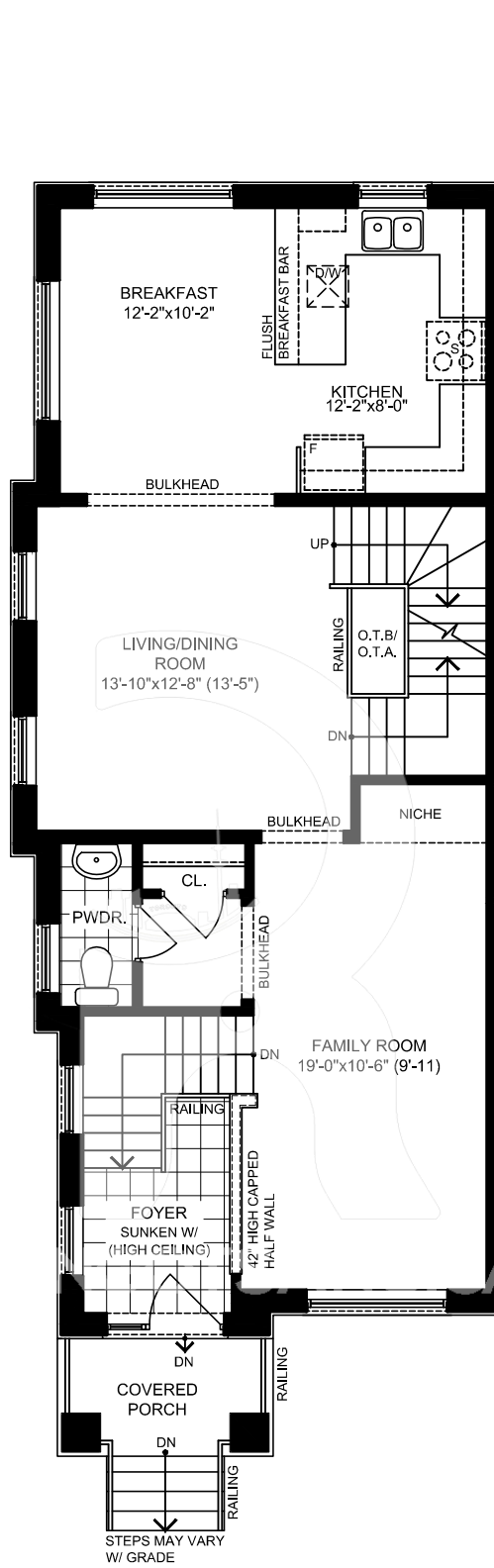
ELEV. B



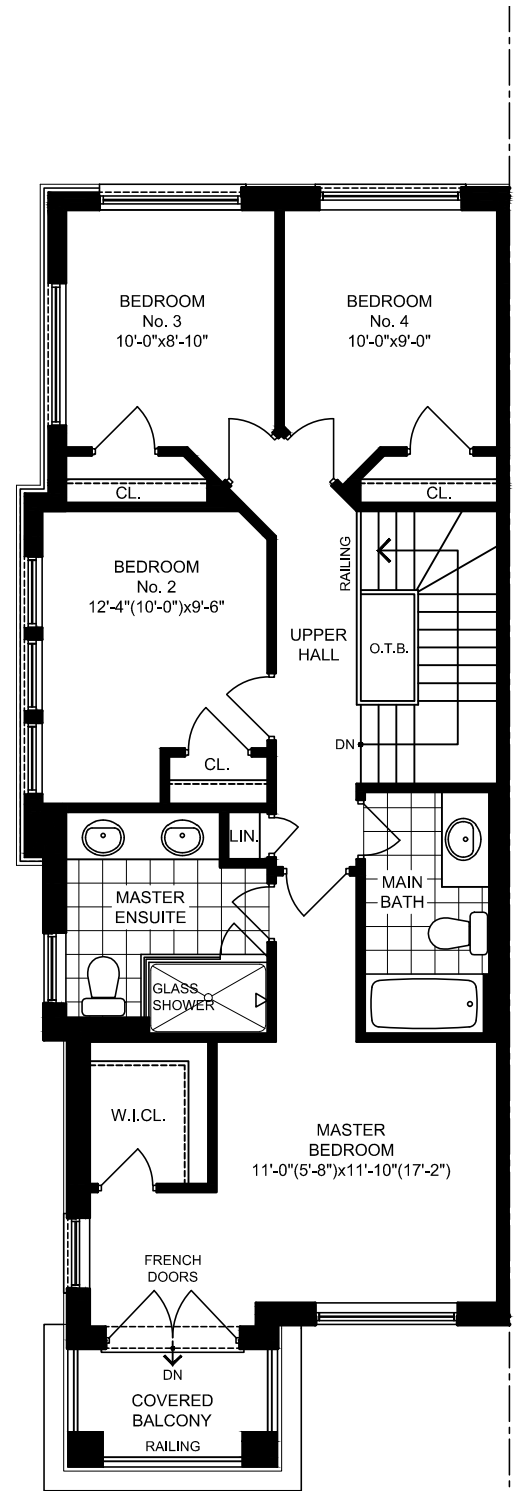
ELEV. A & B
Basement



ELEV. A & B
Ground Floor



ELEV. A & B
Main Floor



ELEV. A & B
Second Floor

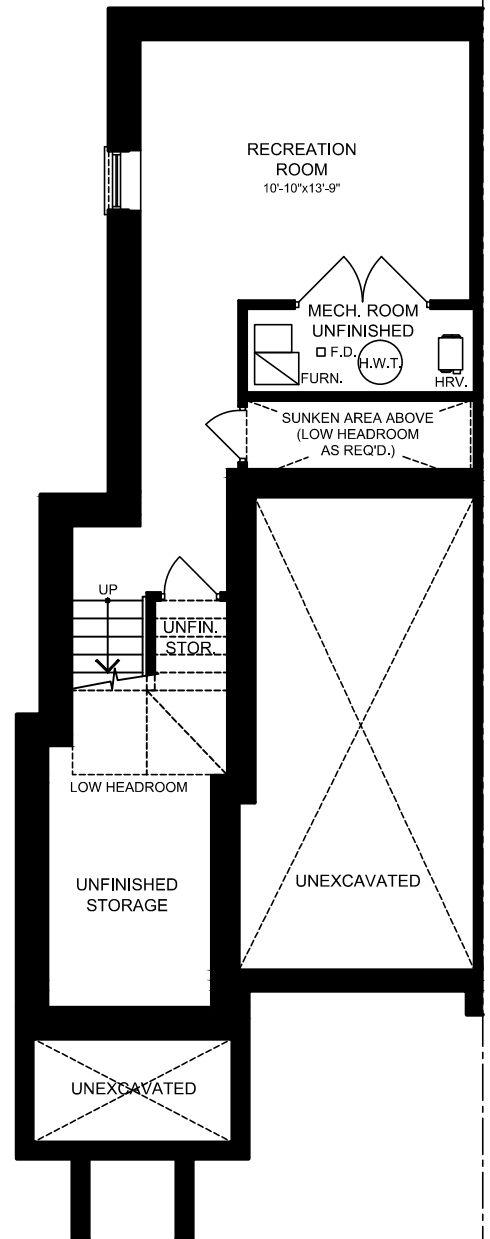
F6

2,146 sq.ft.

INCLUDES 251 SQ.FT. OF FINISHED
BASEMENT & 3 SQ.FT. OF OPEN AREA



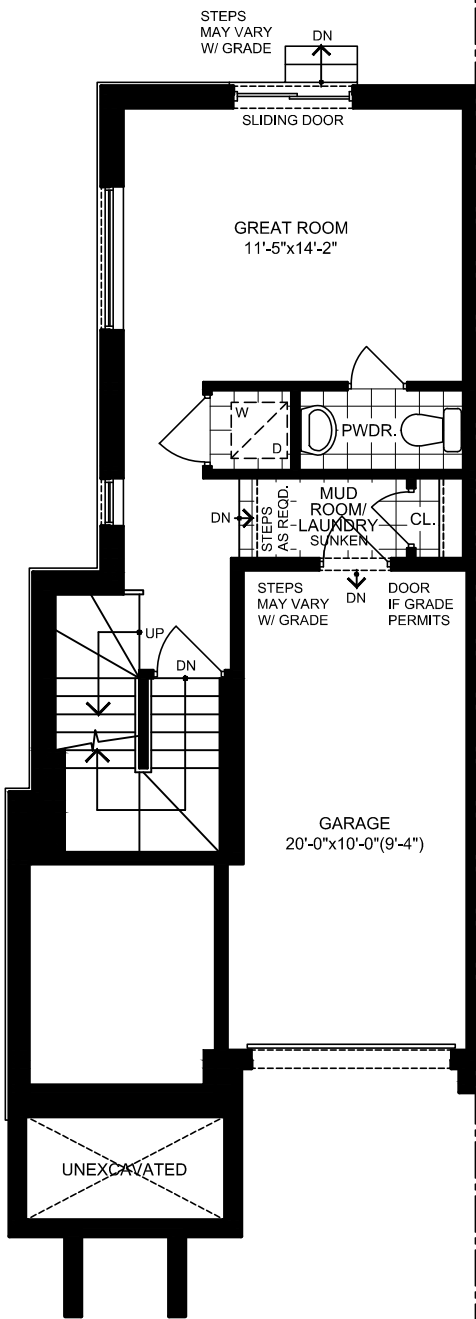
ELEV. A



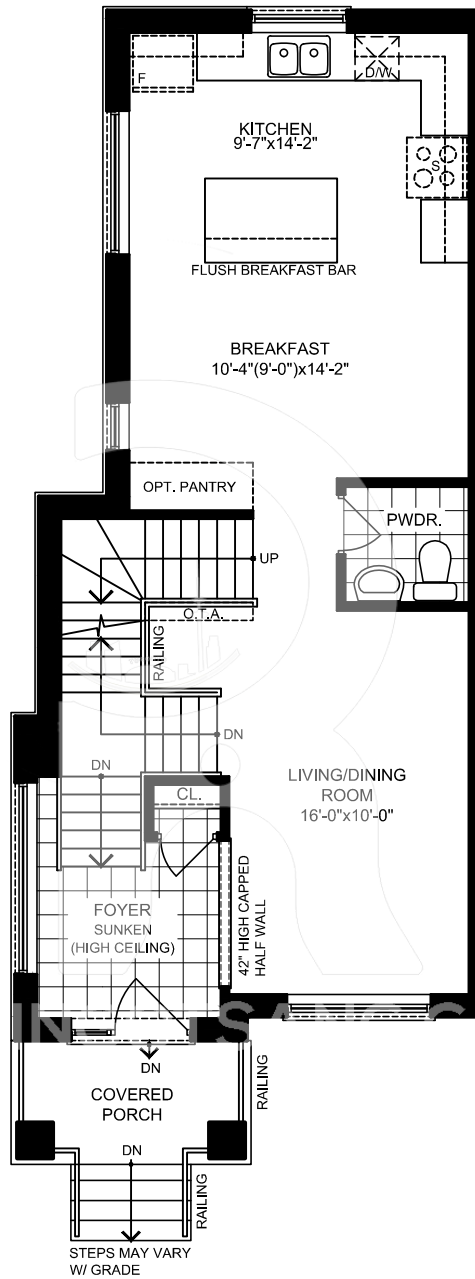
ELEV. A
Basement

RINGOTSAN

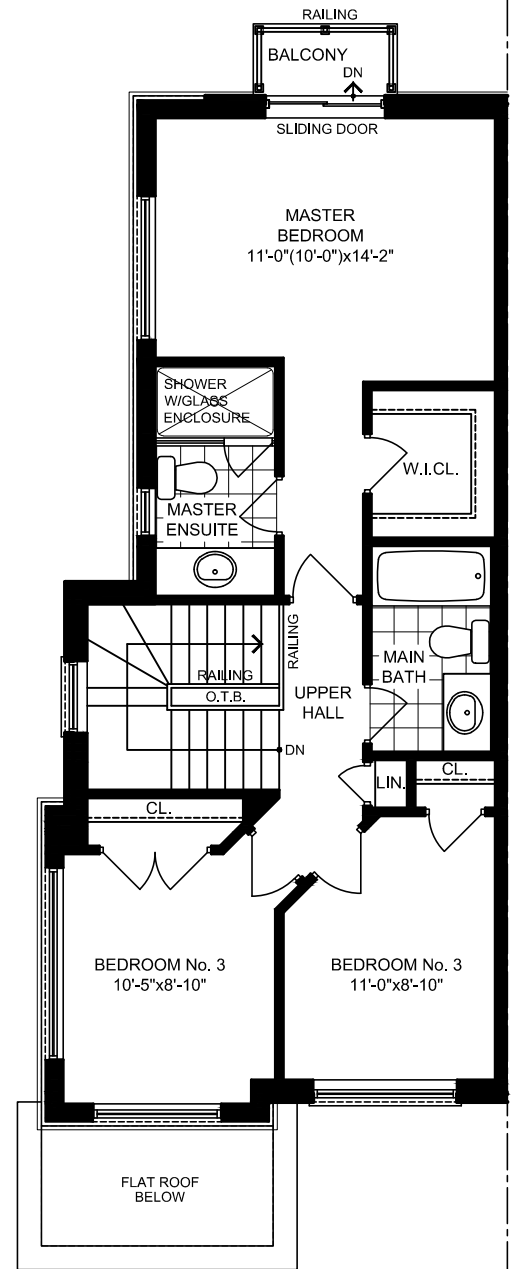
TRENDI
TOWNS IN MARKHAM



ELEV. A
Ground Floor



ELEV. A
Main Floor



ELEV. A
Second Floor

R1

2,065 sq.ft.

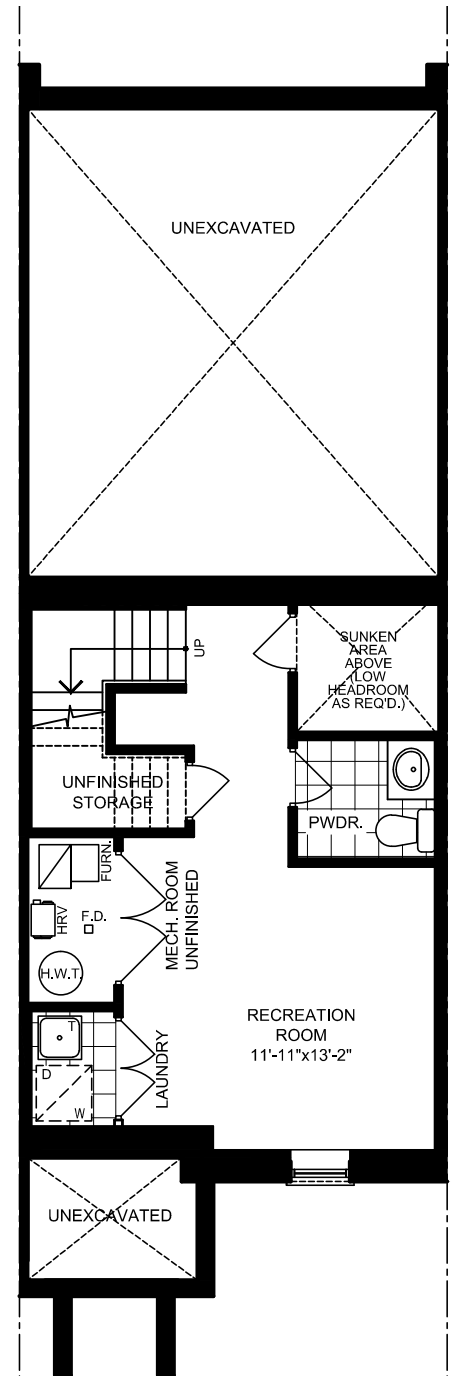
INCLUDES 324 SQ.FT. OF FINISHED
BASEMENT & 16 SQ.FT. OF OPEN AREA



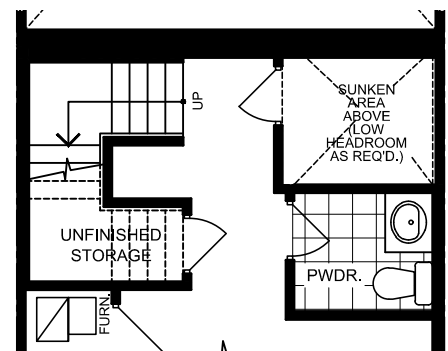
ELEV. A



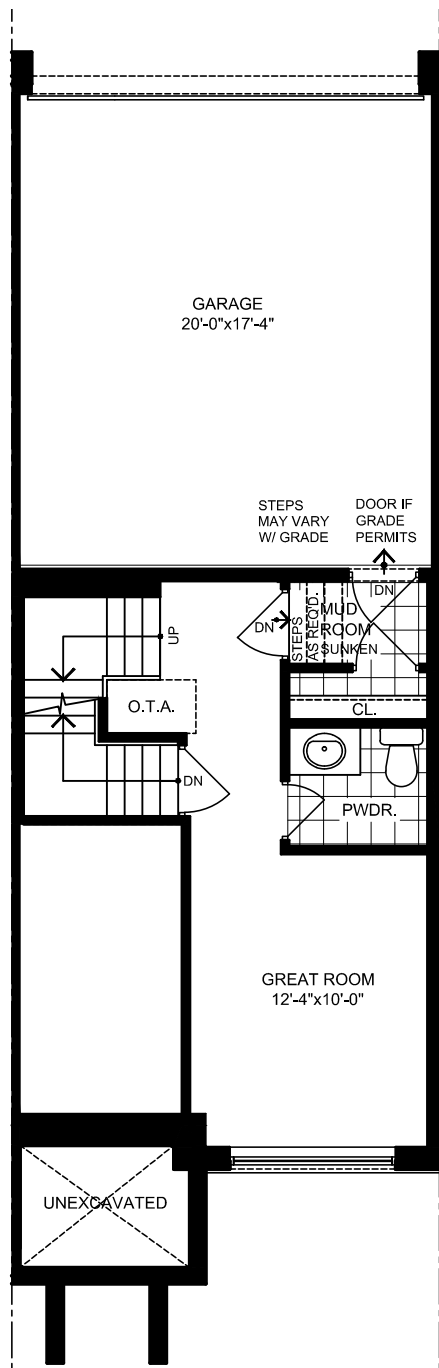
ELEV. B



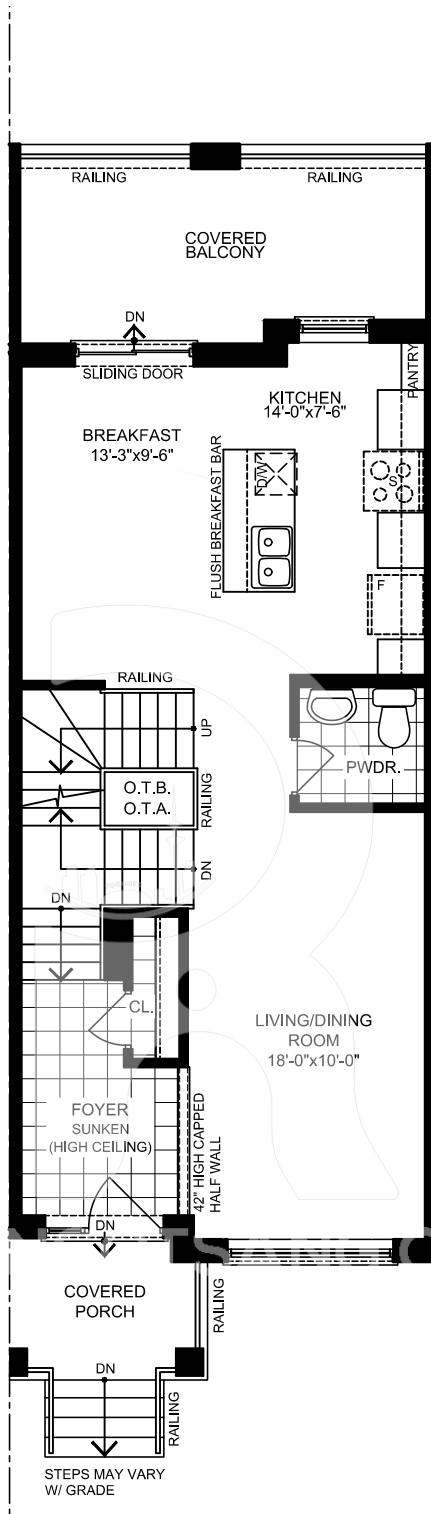
ELEV. A & B
Basement



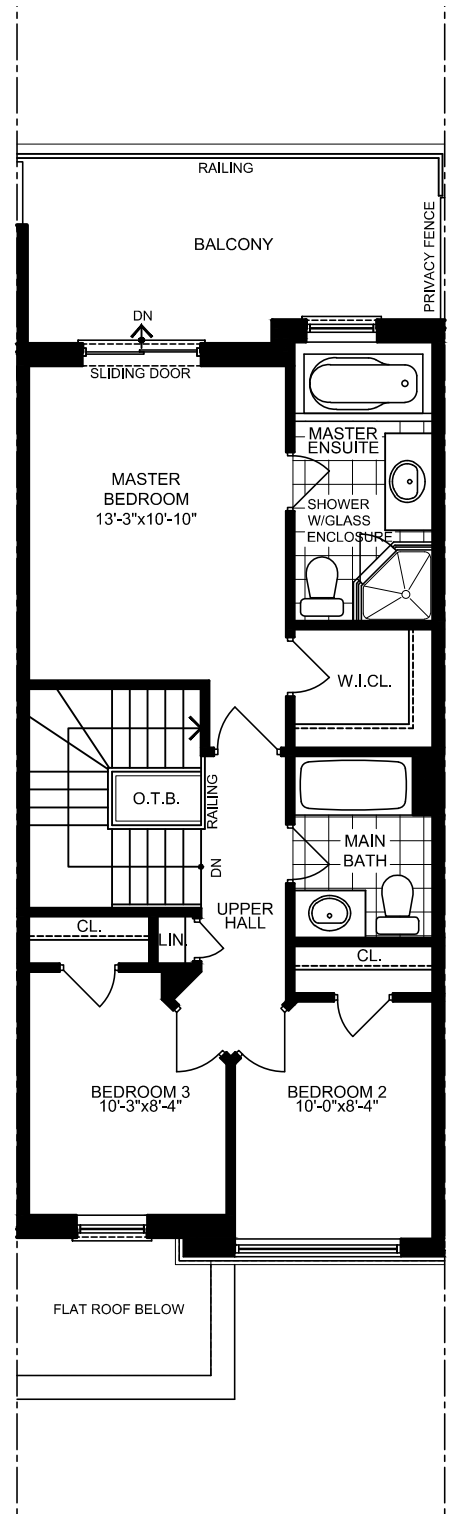
ELEV. A
Finished basement for
optional ground floor



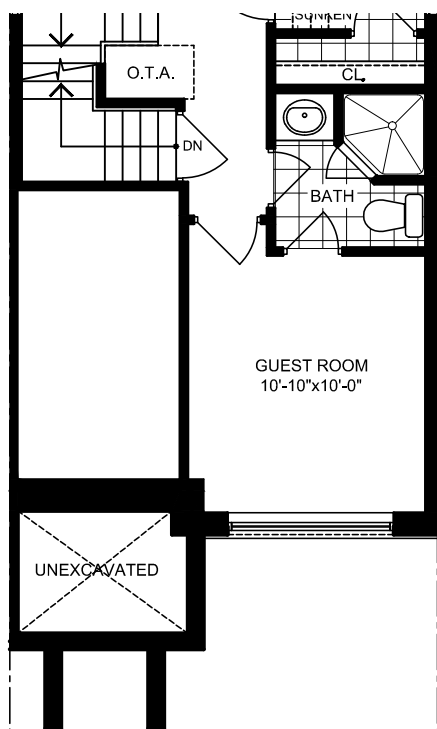
ELEV. A & B
Ground Floor



ELEV. A & B
Main Floor



ELEV. A & B
Second Floor



ELEV. A & B
Ground Floor Optional Layout

NOTE: Orientation of home may be reversed and purchaser agrees to accept the same. Steps may vary at any exterior entrance ways due to grading variance. Actual usable floor space may vary from stated floor area. All renderings are artist's concept. Dimensions, specifications, architectural and mechanical detailing are subject to minor modifications. Unit setback and roofline may vary due to siting. E.&O.E.

R2

2,110 sq.ft.

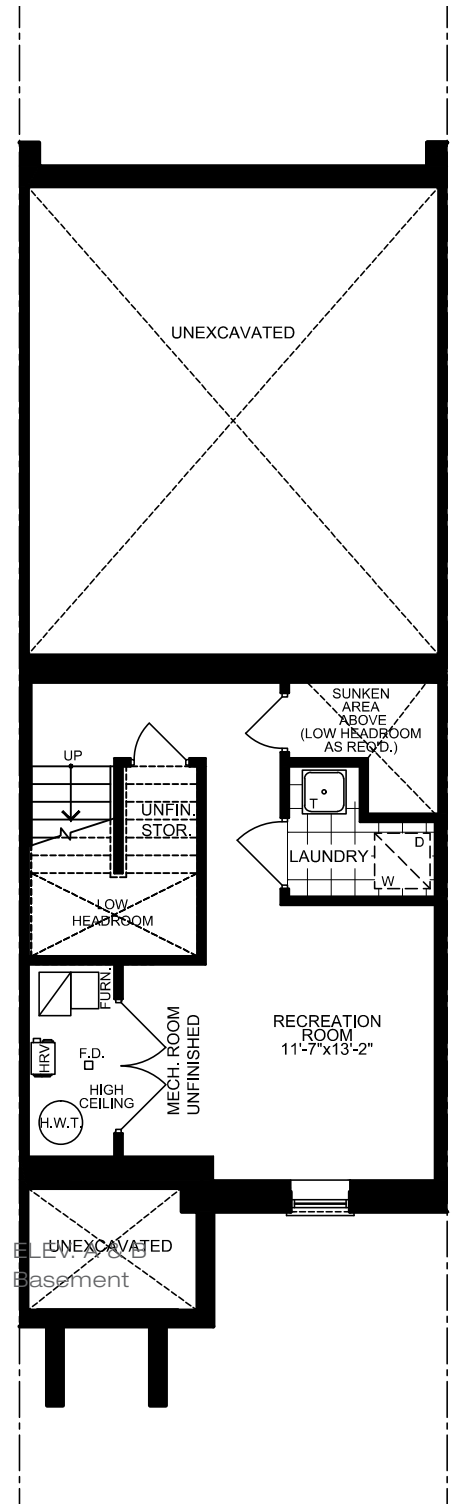
INCLUDES 268 SQ.FT. OF FINISHED
BASEMENT & 3 SQ.FT. OF OPEN AREA



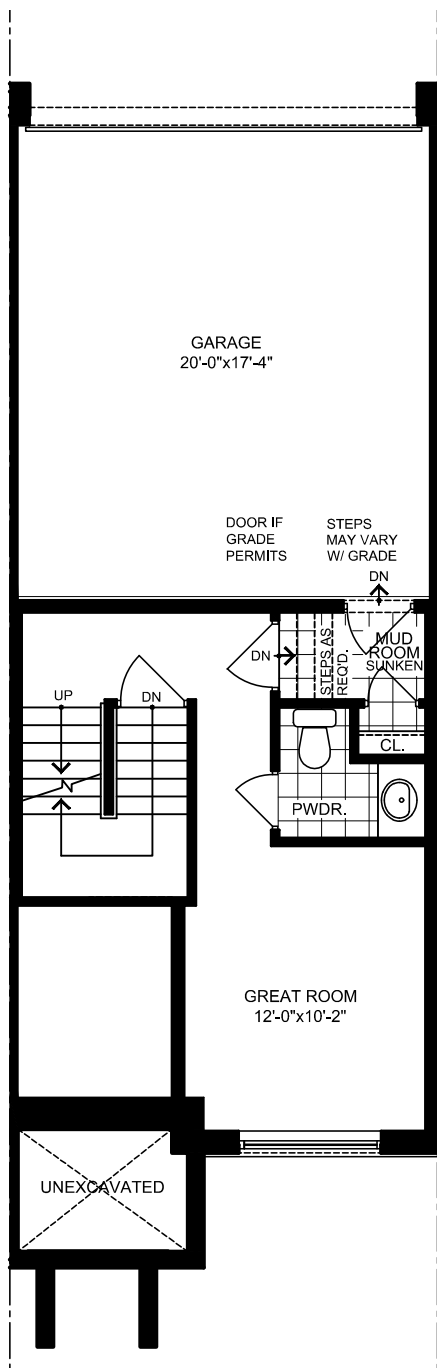
ELEV. A



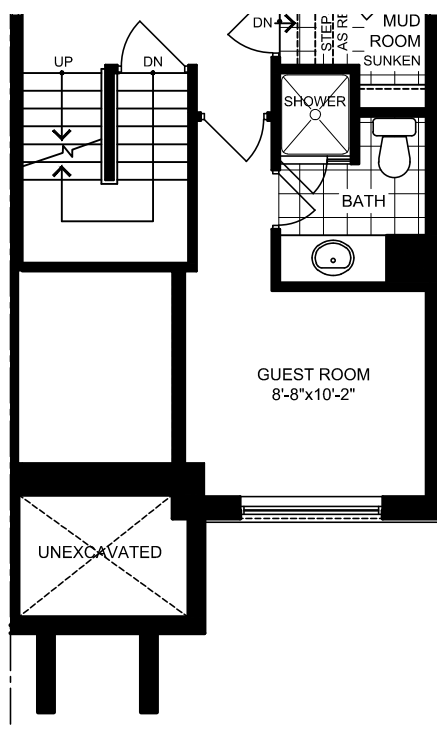
ELEV. B



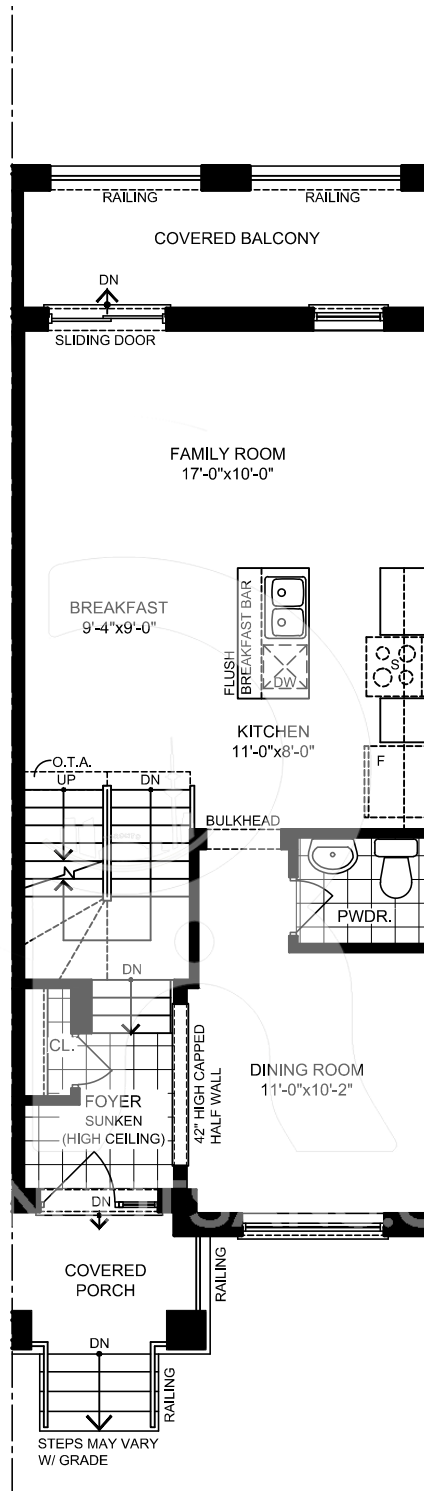
ELEV. A
Basement Optional Layout



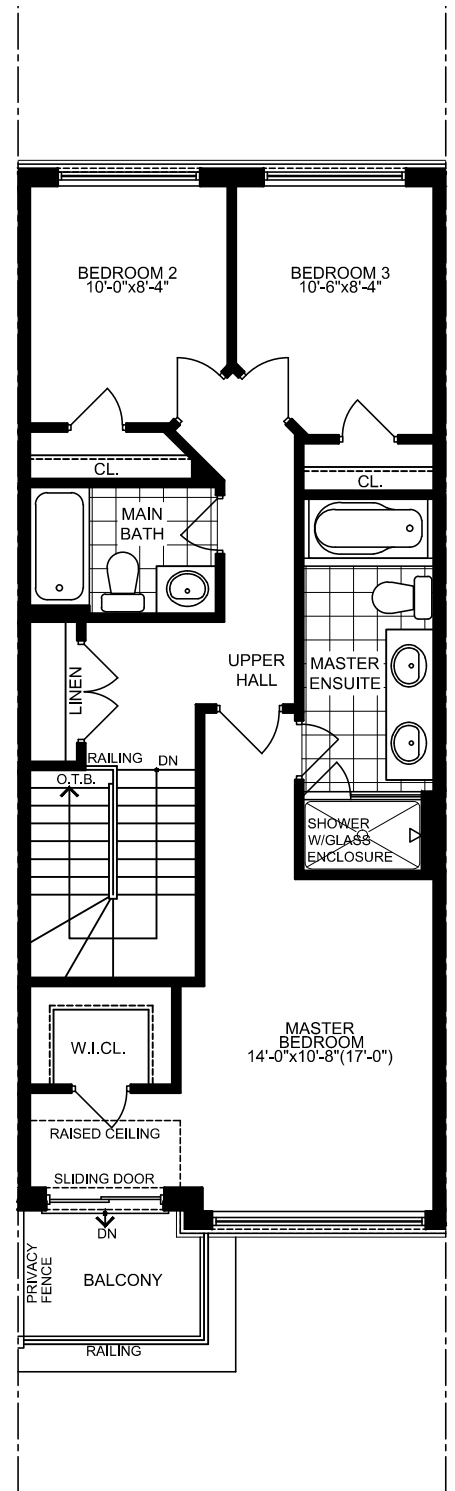
ELEV. A & B
Ground Floor



ELEV. A & B
Ground Floor Optional Layout



ELEV. A & B
Main Floor



ELEV. A & B
Second Floor

R3

2,262 sq.ft.

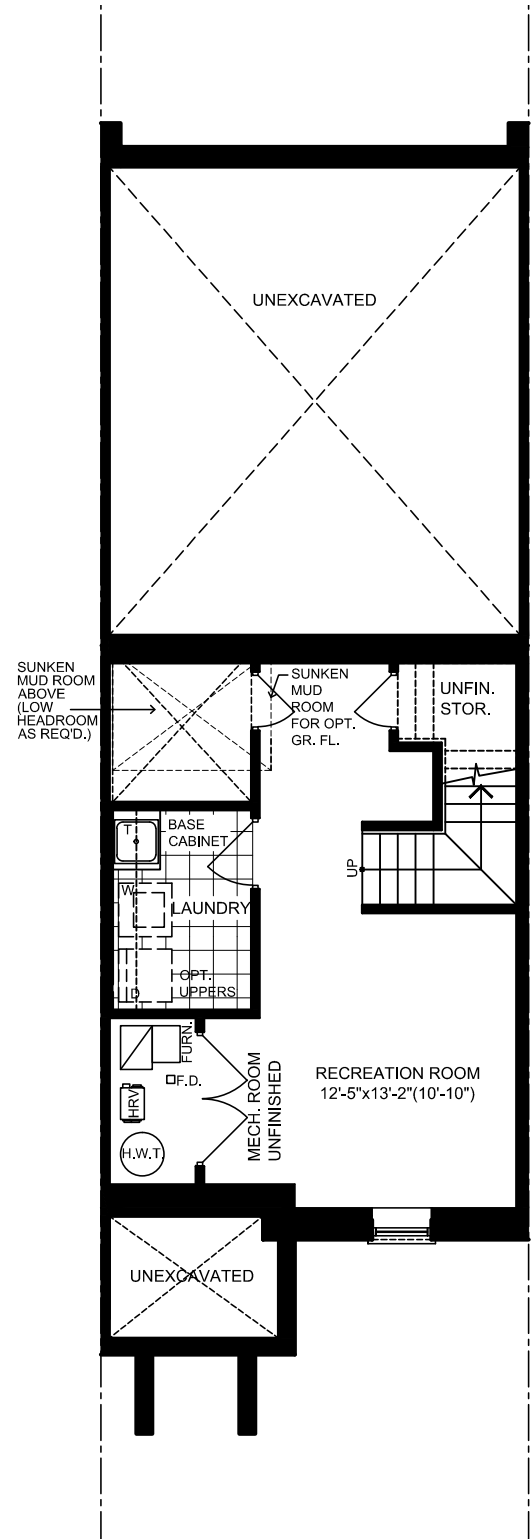
INCLUDES 321 SQ.FT. OF FINISHED
BASEMENT & 22 SQ.FT. OF OPEN AREA



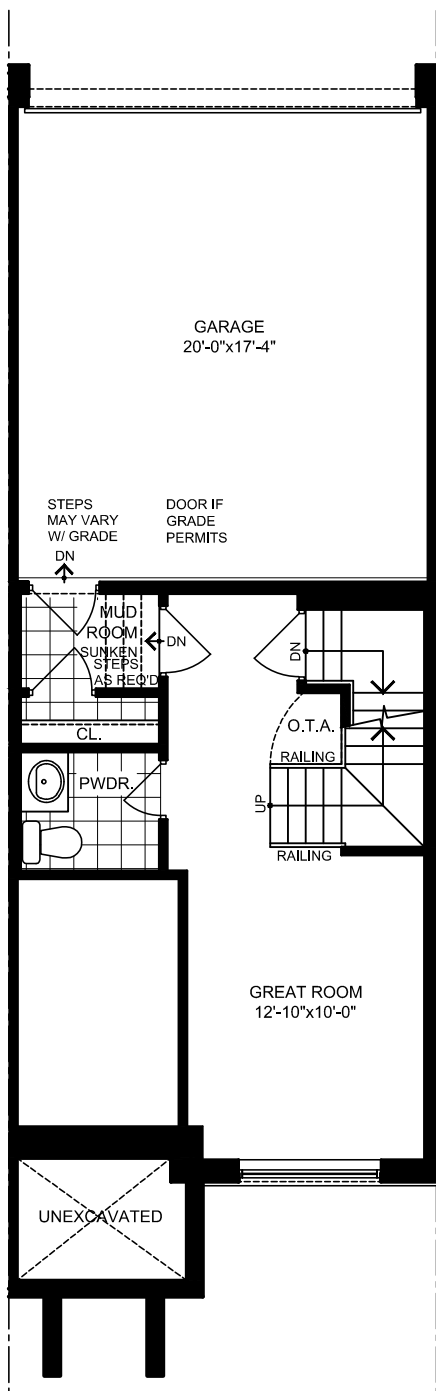
ELEV. A



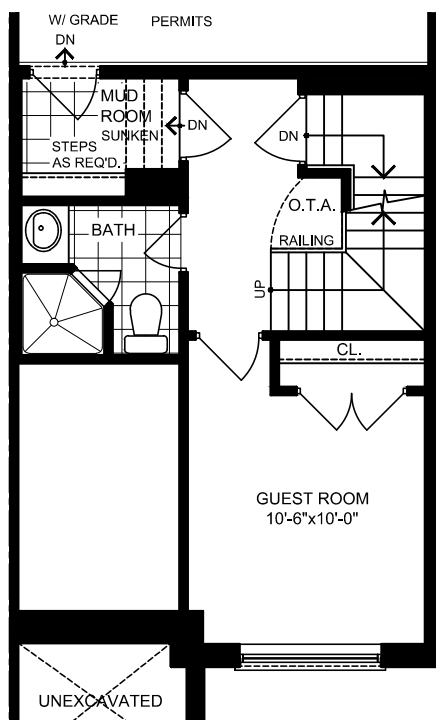
ELEV. B



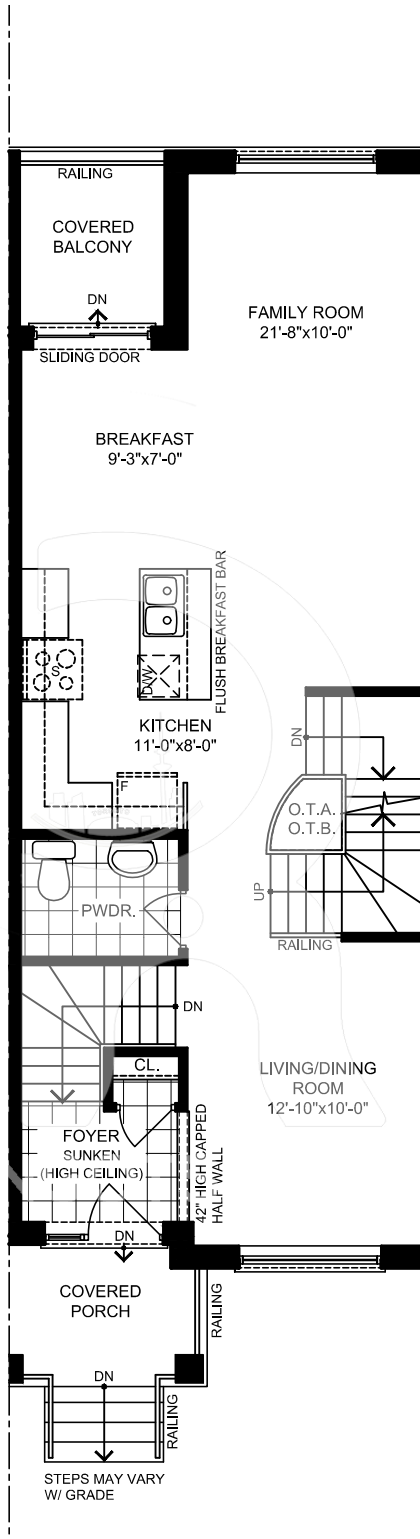
ELEV. A & B
Basement



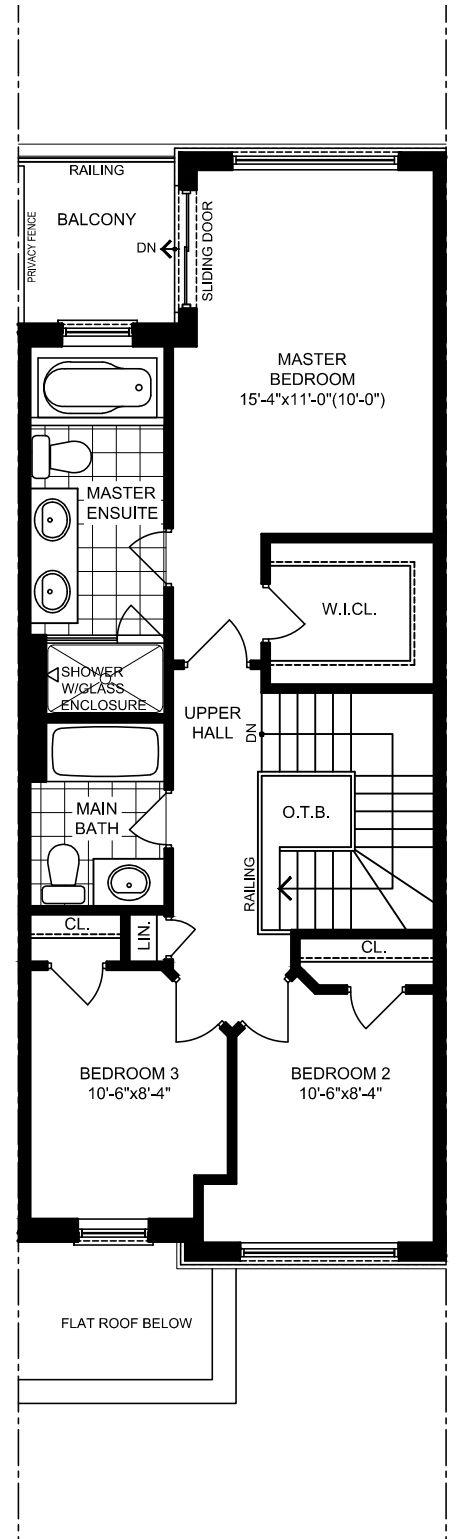
ELEV. A & B
Ground Floor



ELEV. A & B
Ground Floor Optional Layout



ELEV. A & B
Main Floor



ELEV. A & B
Second Floor

NOTE: Orientation of home may be reversed and purchaser agrees to accept the same. Steps may vary at any exterior entrance ways due to grading variance. Actual usable floor space may vary from stated floor area. All renderings are artist's concept. Dimensions, specifications, architectural and mechanical detailing are subject to minor modifications. Unit setback and roofline may vary due to siting. E.&O.E.

R4

2,398 sq.ft.

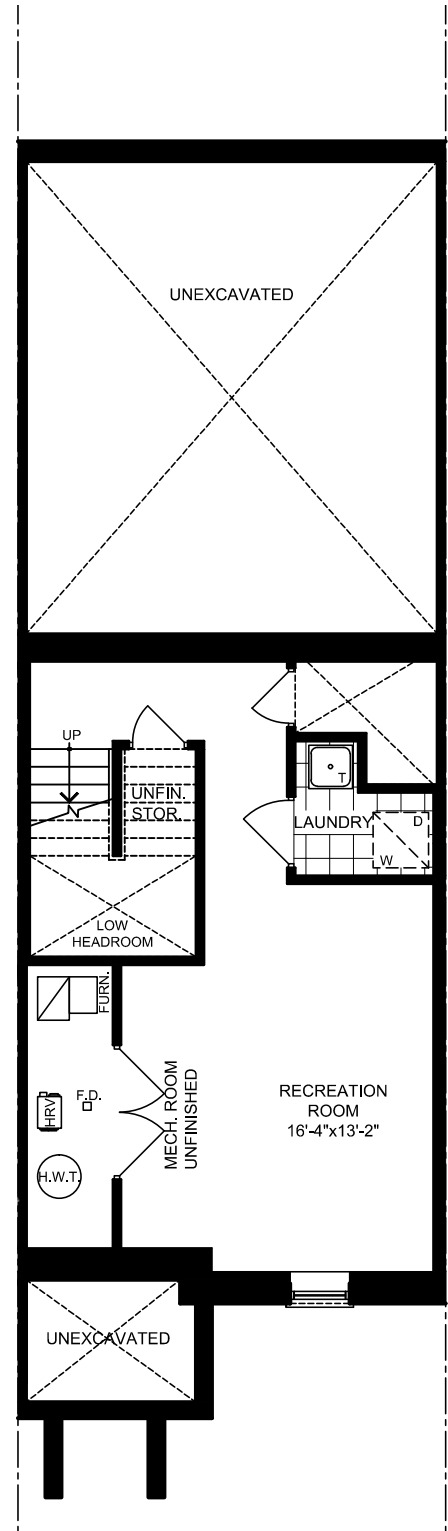
INCLUDES 343 SQ.FT. OF FINISHED BASEMENT AREA



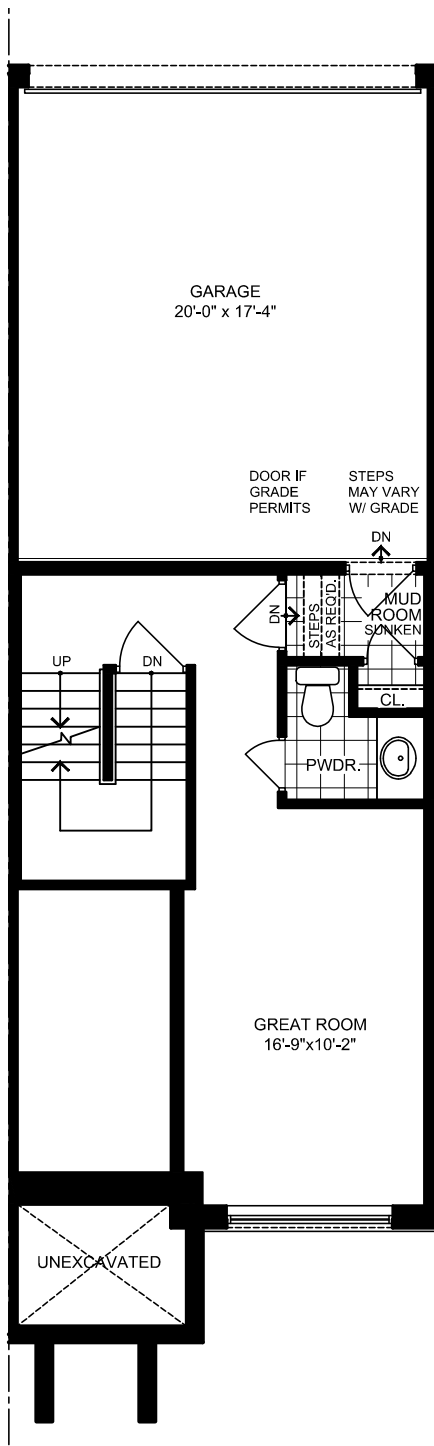
ELEV. A



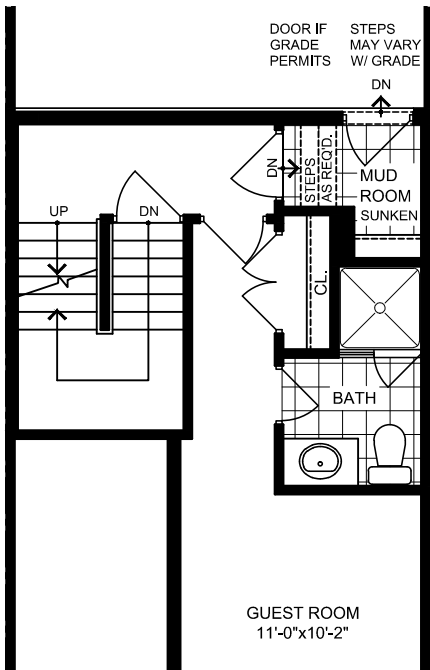
ELEV. B



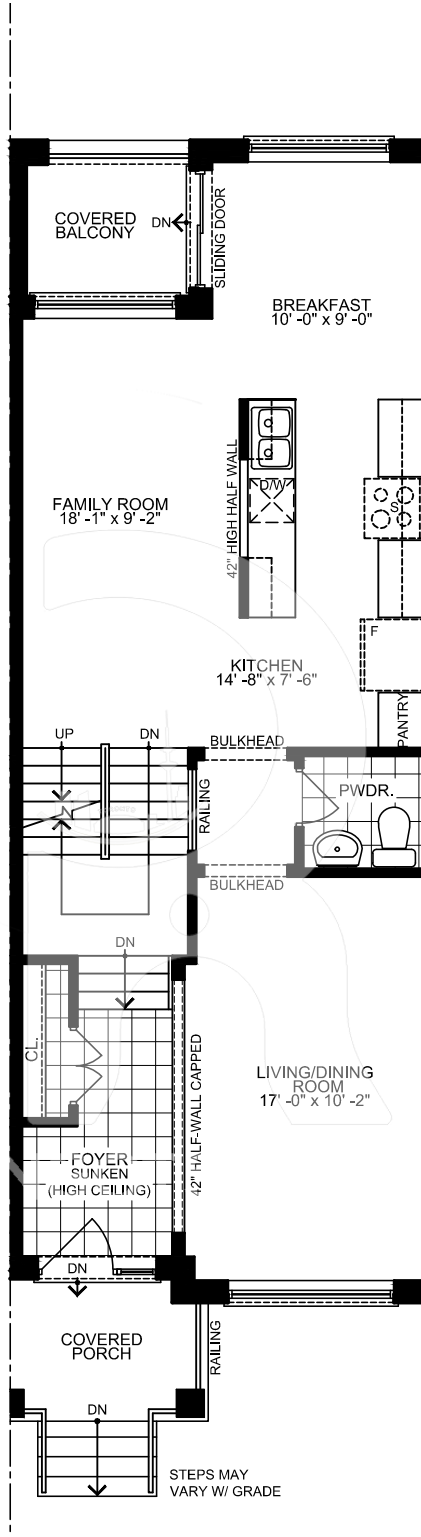
ELEV. A & B
Basement



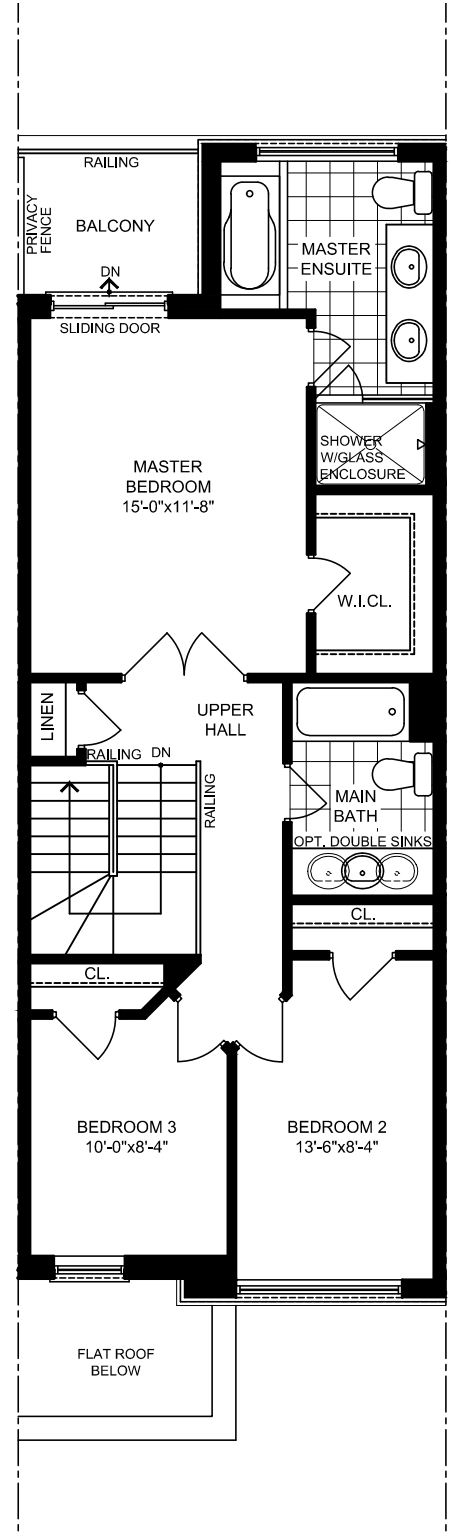
ELEV. A & B
Ground Floor



ELEV. A & B
Ground Floor Optional Layout



ELEV. A & B
Main Floor



ELEV. A & B
Second Floor

R5

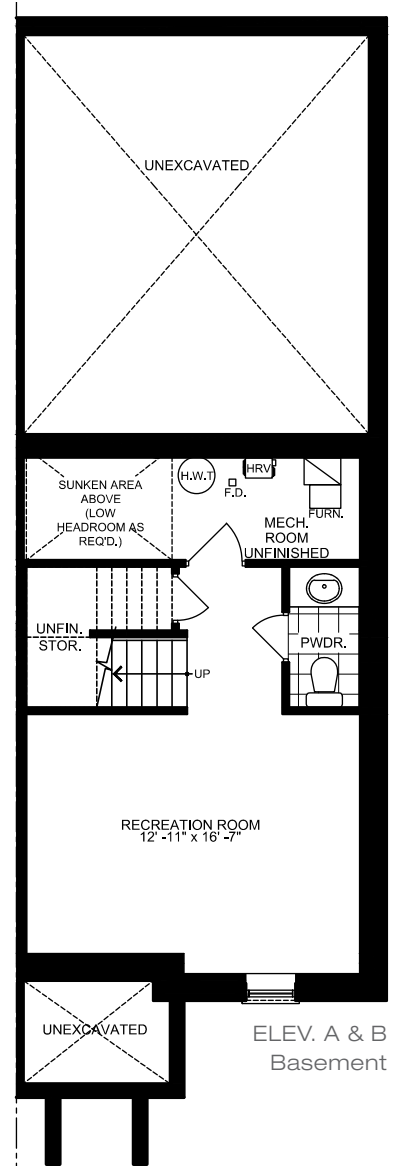
2,430 sq.ft.
INCLUDES 330 SQ.FT. OF
FINISHED BASEMENT AREA



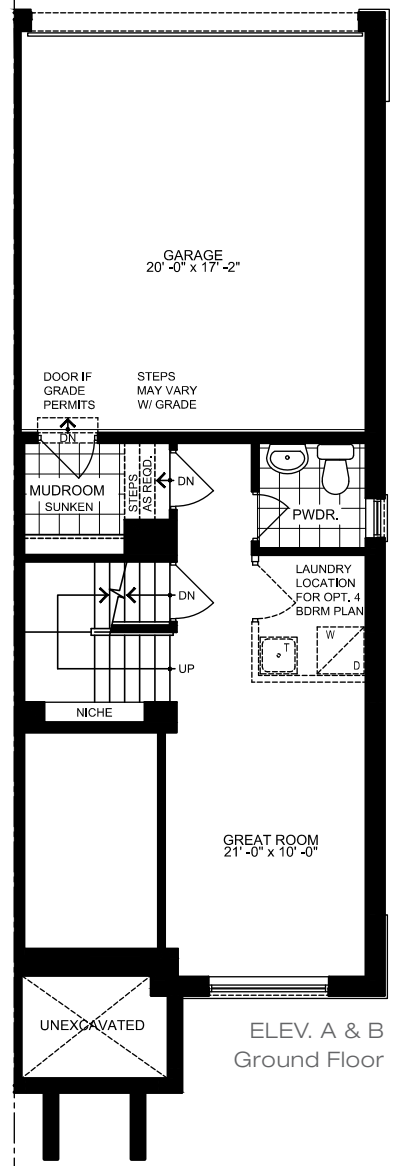
ELEV. A



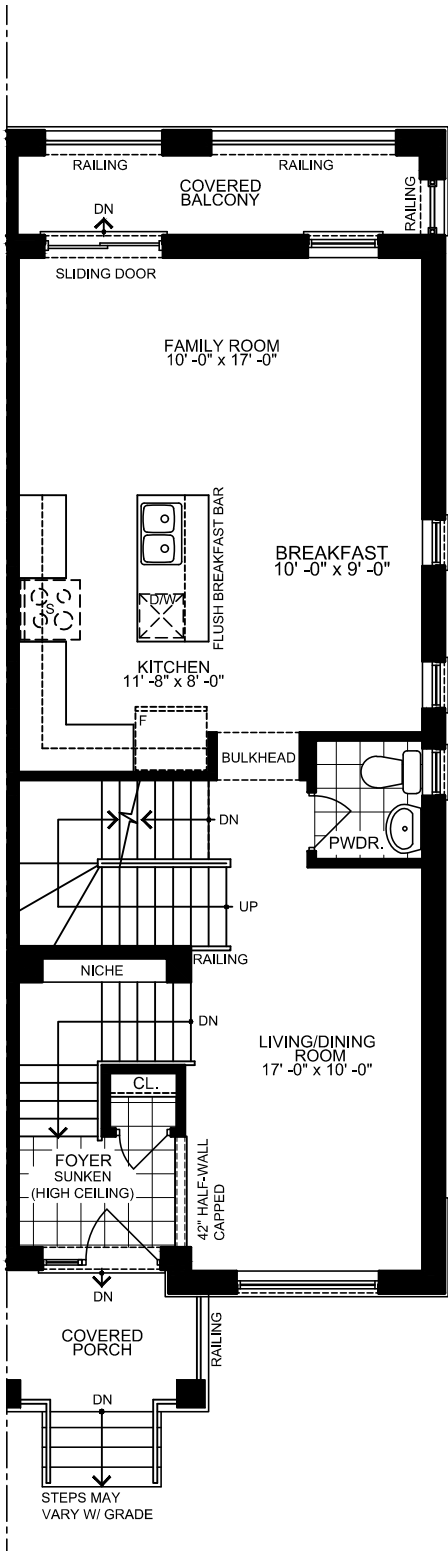
ELEV. B



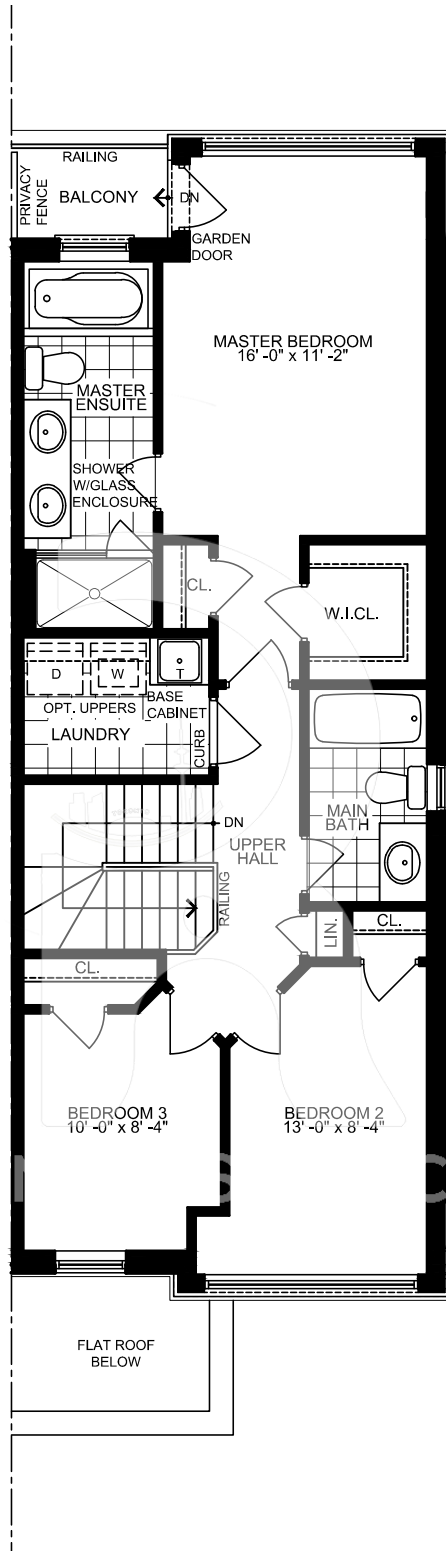
ELEV. A & B
Basement



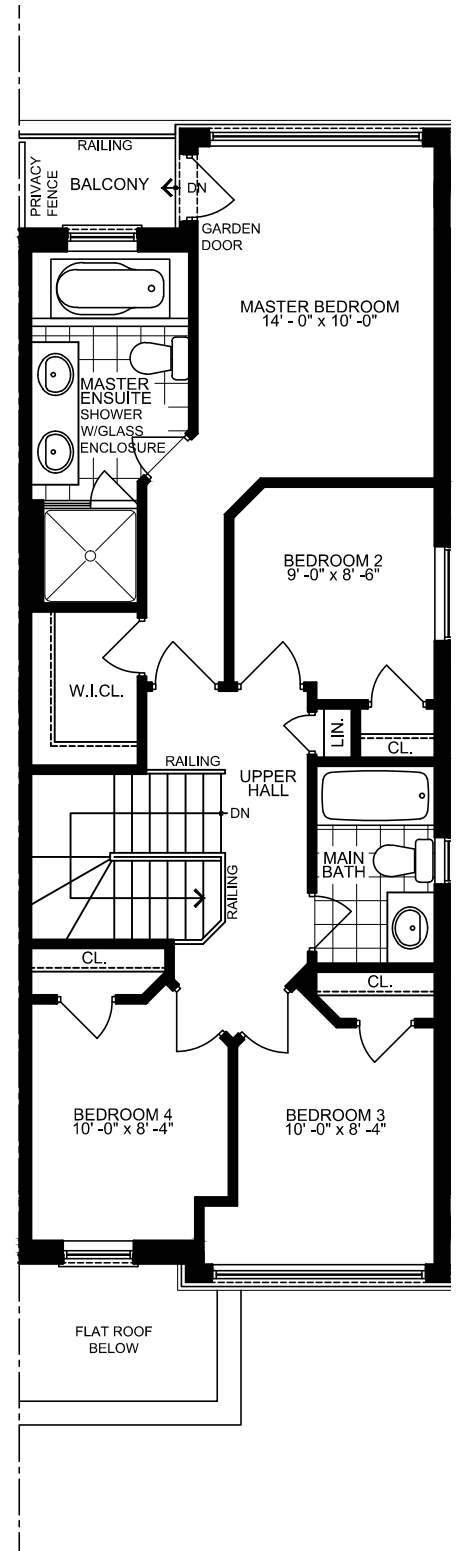
ELEV. A & B
Ground Floor



ELEV. A & B
Main Floor



ELEV. A & B
Second Floor



ELEV. A & B
Second Floor
(4 Bedroom)

NOTE: Orientation of home may be reversed and purchaser agrees to accept the same. Steps may vary at any exterior entrance ways due to grading variance. Actual usable floor space may vary from stated floor area. All renderings are artist's concept. Dimensions, specifications, architectural and mechanical detailing are subject to minor modifications. Unit setback and roofline may vary due to siting. E.&O.E.

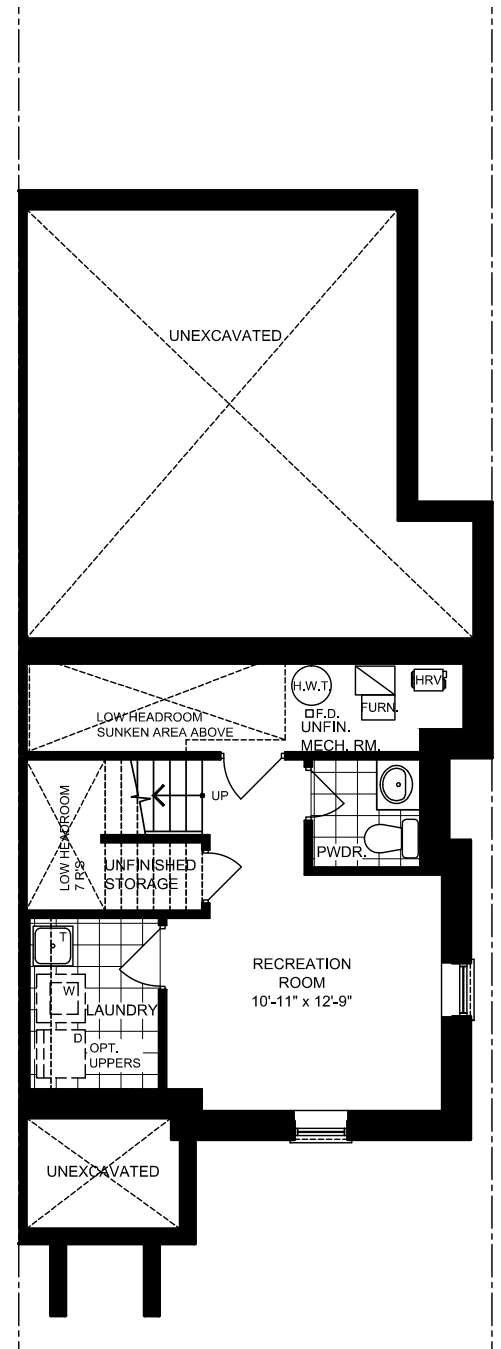
R6

2,345 sq.ft.

INCLUDES 284 SQ.FT. OF FINISHED BASEMENT AREA



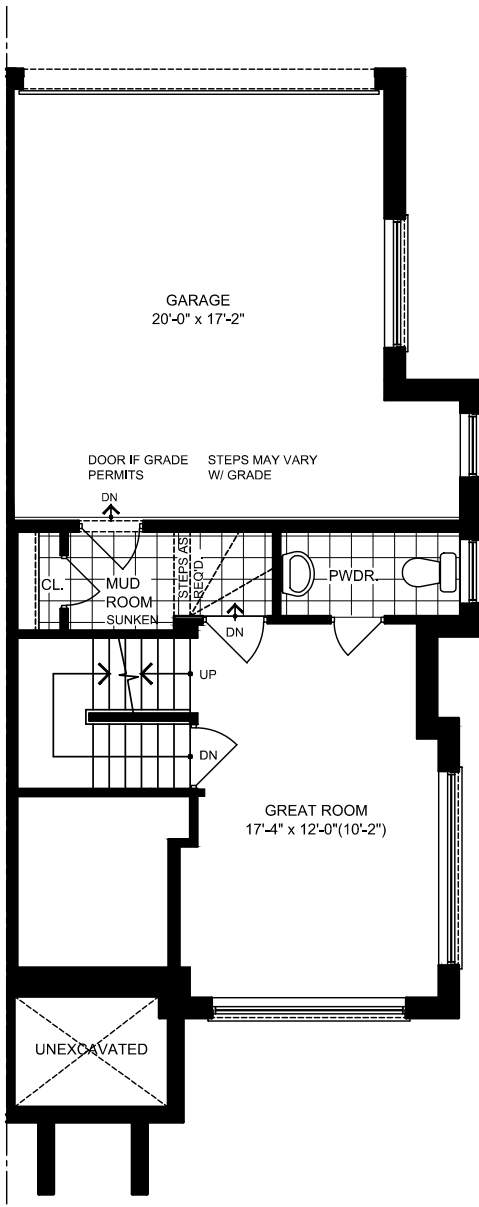
ELEV. A



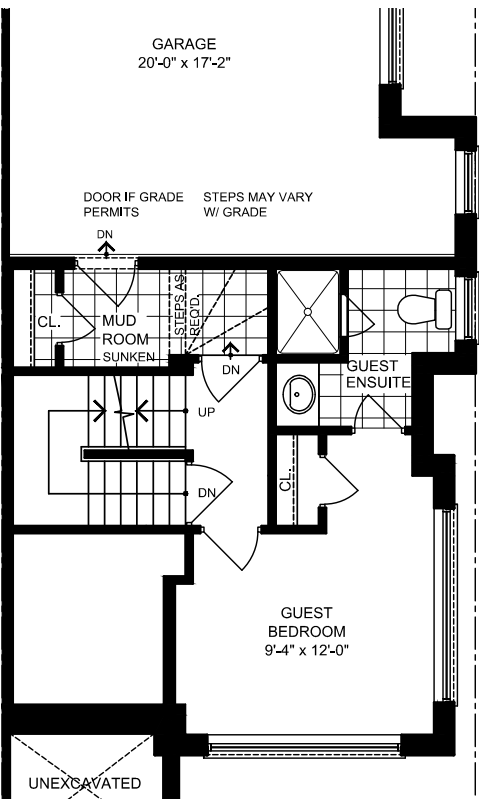
ELEV. A
Basement

RINGO T S A

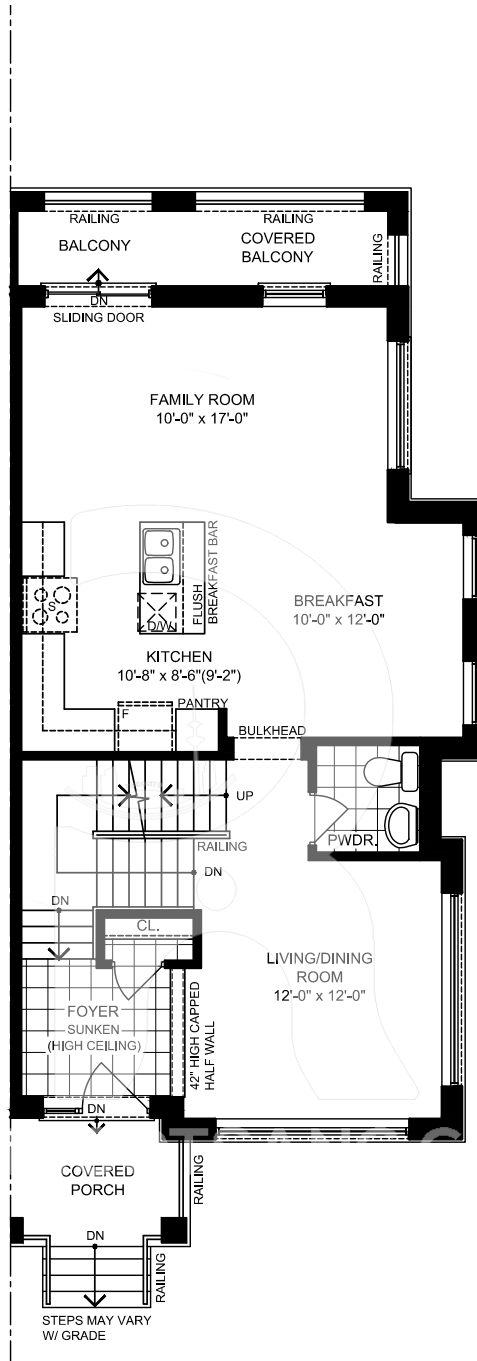
TRENDI
TOWNS IN MARKHAM



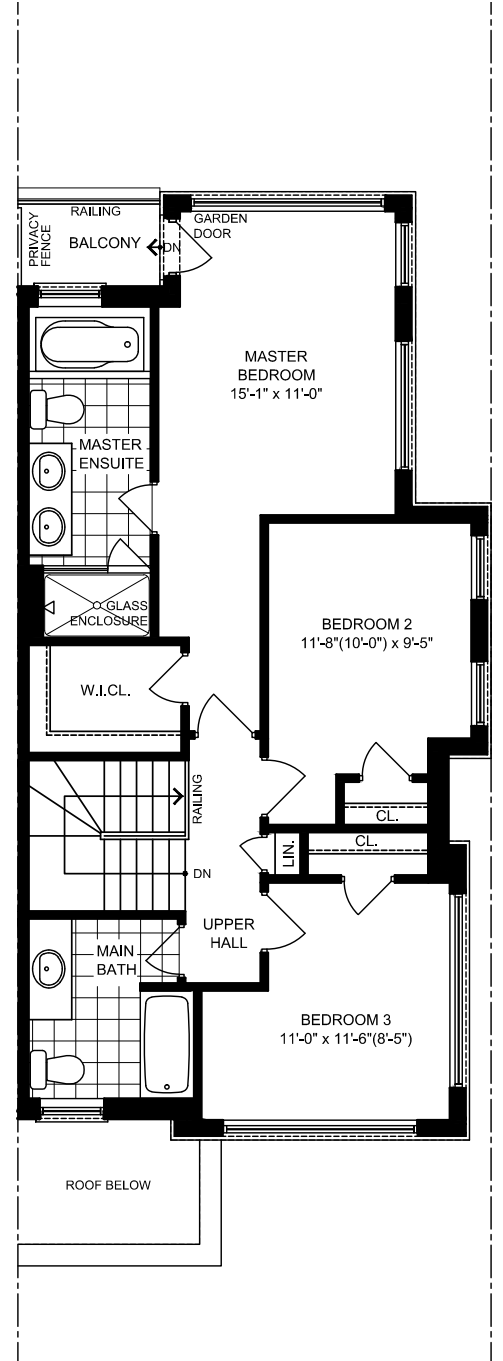
ELEV. A
Ground Floor



ELEV. A
Ground Floor Optional Layout



ELEV. A
Main Floor



ELEV. A
Second Floor

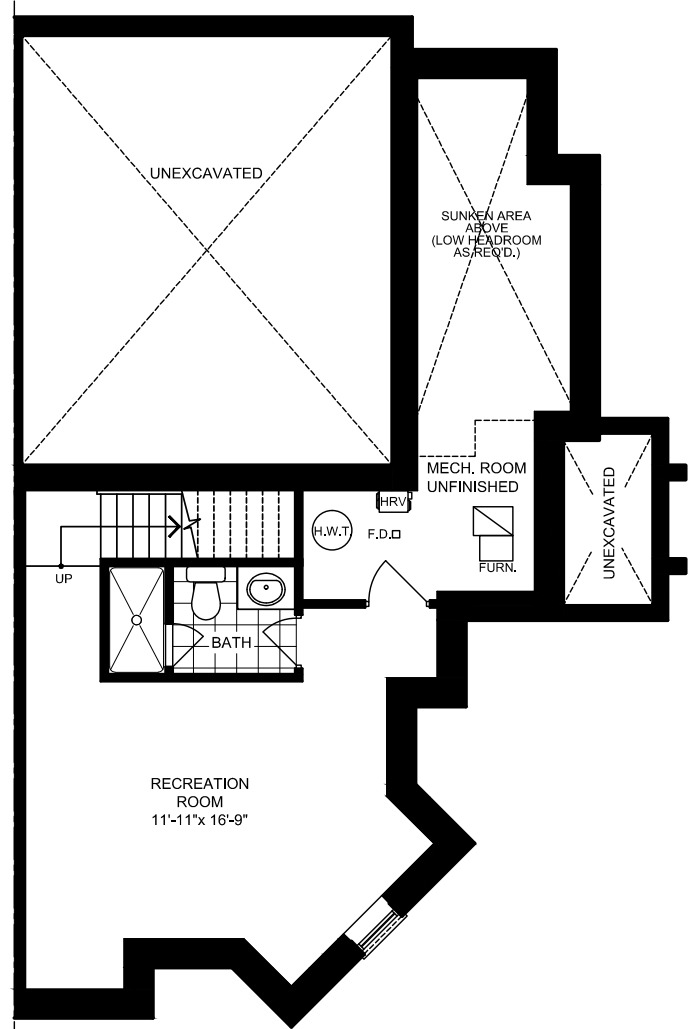
R7

3,110 sq.ft.

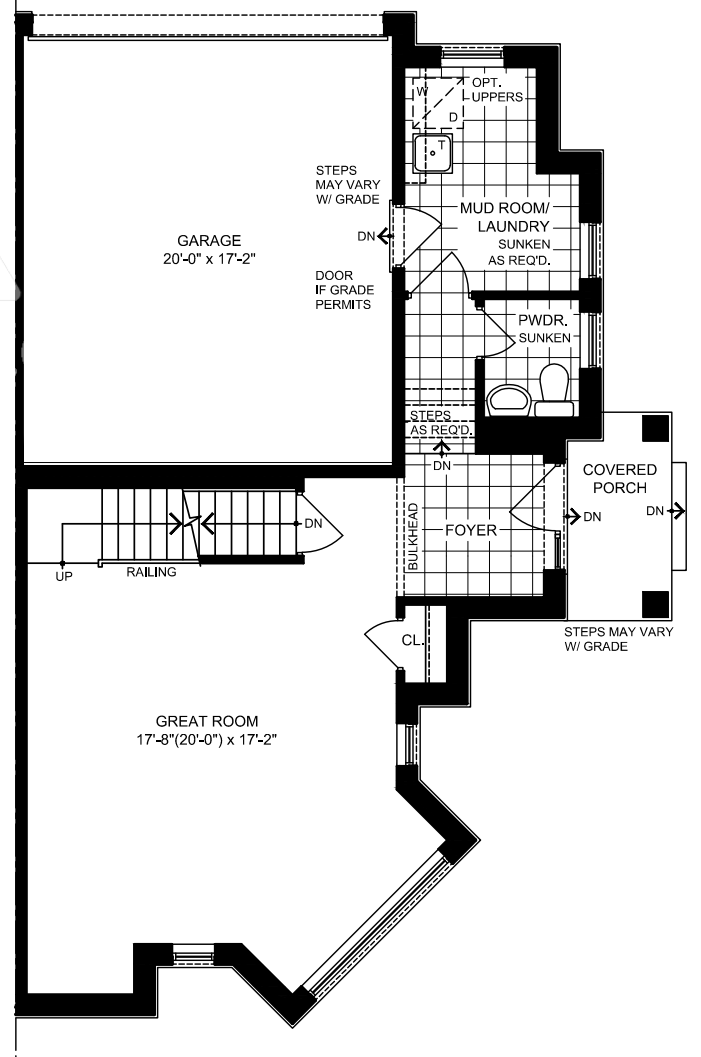
INCLUDES 384 SQ.FT. OF FINISHED BASEMENT & 10 SQ.FT. OF OPEN AREA



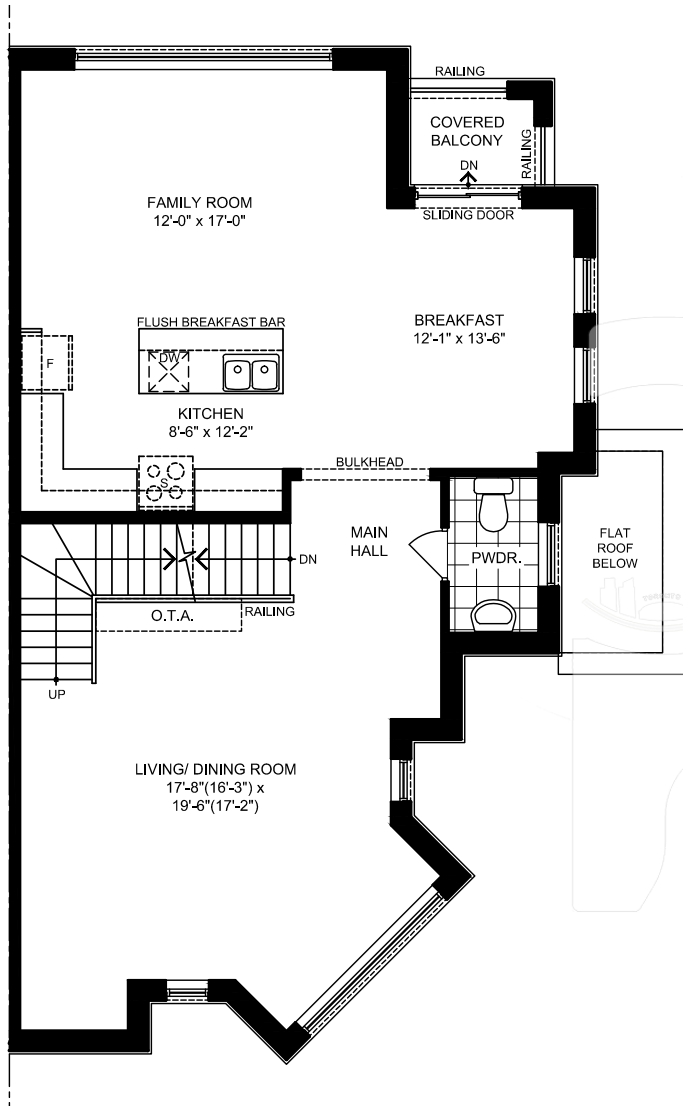
ELEV. A



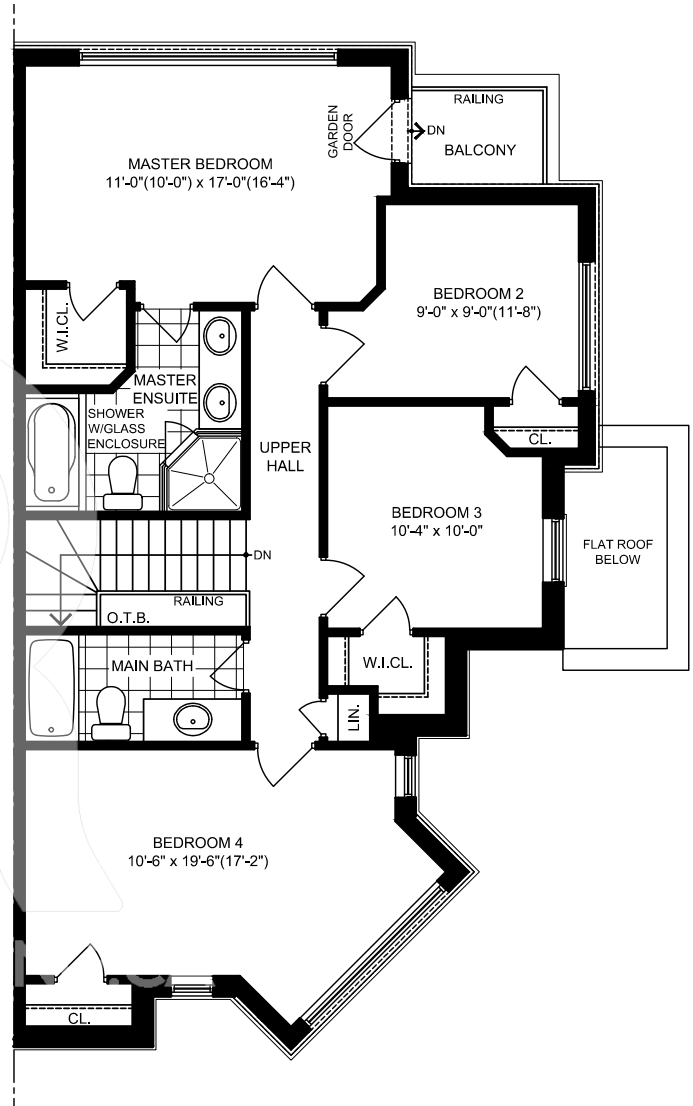
ELEV. A
Basement



ELEV. A
Ground Floor



ELEV. A
Main Floor



ELEV. A
Second Floor



R
RINGOTSANG.CA

FEATURES + FINISHES

- Main floor ceiling height to be 10' with door height and arches to be 8', as per plan.
- Second floor ceiling height to be 9' with door height and arches to be 6' 8", as per plan.
- Tongue and groove subflooring glued to engineered floor joists.
- Integrated mechanical system with dual purpose hot water complete with high-velocity air distribution system for heating and cooling.
- Supply and install properly sized air conditioning units.
- Modern trim interior baseboard to be 3" flat stock painted to match wall colour.
- Modern trim interior casing to be 2" flat stock painted to match wall color.
- Stained oak staircase throughout finished areas as per plan.
- Stained oak interior handrail throughout finished areas as per plan.
- Stained oak square pickets throughout finished area where applicable, as per plan.
- Undermount double bowl stainless steel Blanco sink with single lever faucet.
- Group 1 or 1A granite waterfall island where applicable, as per plan.
- Stainless steel appliance package complete with electric range, refrigerator, hood fan and dishwasher supplied and installed.
- Smart design interiors with three colour schemes.
- 10mm frameless glass shower enclosure with chrome knob and hinges in master ensuite only, where applicable, as per plans.
- White washer and dryer supplied and installed (stacked where required).
- Smooth ceilings throughout finished areas, as per plan.
- Decora switches and plugs, white.
- Large front and rear windows allowing for abundant natural light.

Treasure Hill

Treasure Hill

Greybrook
Realty Partners
Asset Management & Advisory Services



Treasure Hill is the recipient of multiple BILD awards including twice winning Low-Rise Project of the Year. Dedication to quality craftsmanship, attention to detail, and listening to purchasers' wants and needs have helped to elevate our reputation as one of the GTA's most dependable and sought-after new home builders.