

ST.CLAIR

VILLAGE

PRICE LIST

900 ST. CLAIR WEST

Rising proudly at the epicentre of midtown Toronto and with the St. Clair dedicated streetcar at your doorstep, explore the array of top Toronto local restaurants, bakeries, bistros, markets, boutiques, galleries, parks, and nearby Artscape Wychwood Barns. St. Clair Village by Canderel™ is a true Toronto original.

MODEL TYPE	SUITE SIZE (SQ FT)	EXPOSURE	STARTING PRICE
2 BEDROOM	735 - 915	WEST	\$819,900
2 BEDROOM + DEN	917 – 1,082	NORTH/EAST, NORTH/WEST, SOUTH/WEST	\$895,900
3 BEDROOM	1,248 – 1,294	SOUTH/EAST, SOUTH/WEST	\$1,297,900

900 ST. CLAIR WEST PENTHOUSE COLLECTION

Rising proudly at the epicentre of midtown Toronto and with the St. Clair dedicated streetcar at your doorstep, explore the array of top Toronto local restaurants, bakeries, bistros, markets, boutiques, galleries, parks, and nearby Artscape Wychwood Barns. St. Clair Village by Canderel™ is a true Toronto original. On the top two floors with unobstructed views, superior finishes, and luxury features; The Penthouse Collection is the pinnacle of St. Clair Village.

MODEL TYPE	SUITE SIZE (SQ FT)	EXPOSURE	STARTING PRICE
2 BEDROOM	732 - 867	EAST, WEST, SOUTH/EAST	\$894,900
2 BEDROOM + DEN	936	NORTH/EAST	\$1,039,900
3 BEDROOM	1,007 – 1,124	NORTH/EAST, NORTH/WEST	\$1,112,900

BUILDING FEATURES

900 St. Clair Avenue West at Alberta Avenue is a 12-storey, 122-unit residential development project with a retail component at ground level. Designed with a warm fireplace glowing against the cool sleekness of a stone backdrop, the lobby exudes luxury design. Amenities on the 2nd floor include, a modern style fitness centre with contemporary fitness equipment, elegant Wine and Co-working Lounge with temperature-controlled wine storage, Club 900 including an indoor party room and outdoor terrace. Hold the best get together in Toronto on the 12th floor 2,526 sq. ft. rooftop terrace with spectacular views of the CN Tower and the downtown core.

DEPOSIT STRUCTURE (LOCAL)	3 BEDROOM DEPOSIT STRUCTURE (LOCAL)	DEPOSIT STRUCTURE (OVERSEAS)
\$5,000 with offer Balance to 5% in 10 Days 5% in 90 Days 5% in 180- 270 days 5% in 360 540 Days (LIMITED TIME)	\$5,000 with offer Balance to 5% in 10 Days 5% in 90 Days 5% in 180- 370 days 5% in 360 720 Days (LIMITED TIME)	5% with offer 5% in 90 Days 10% in 180 Days 10% in 540 Days 5% on Occupancy (LIMITED TIME)
PARKING MAINTENANCE \$50.00/month	PARKING \$65,000 available for units 732 Sq. Ft	
MAINTENANCE FEES Approximately \$0.61/ SQ. FT (Hydro & Water are not included, and are separately metered)	LOCKERS Wait list	
TAXES Estimated at approximately 1% of Purchase Price, subject to adjustments Prices include H.S.T	OCCUPANCY Winter 2021	
	BULK INTERNET \$25.00/month Rogers Ignite High Speed Internet Package Exclusive to 900 St. Clair	

PRESENTATION GALLERY: 805 ST. CLAIR AVE WEST, TORONTO, ON M6C 1B9 | SALES@STCLAIRVILLAGE.COM | STCLAIRVILLAGE.COM

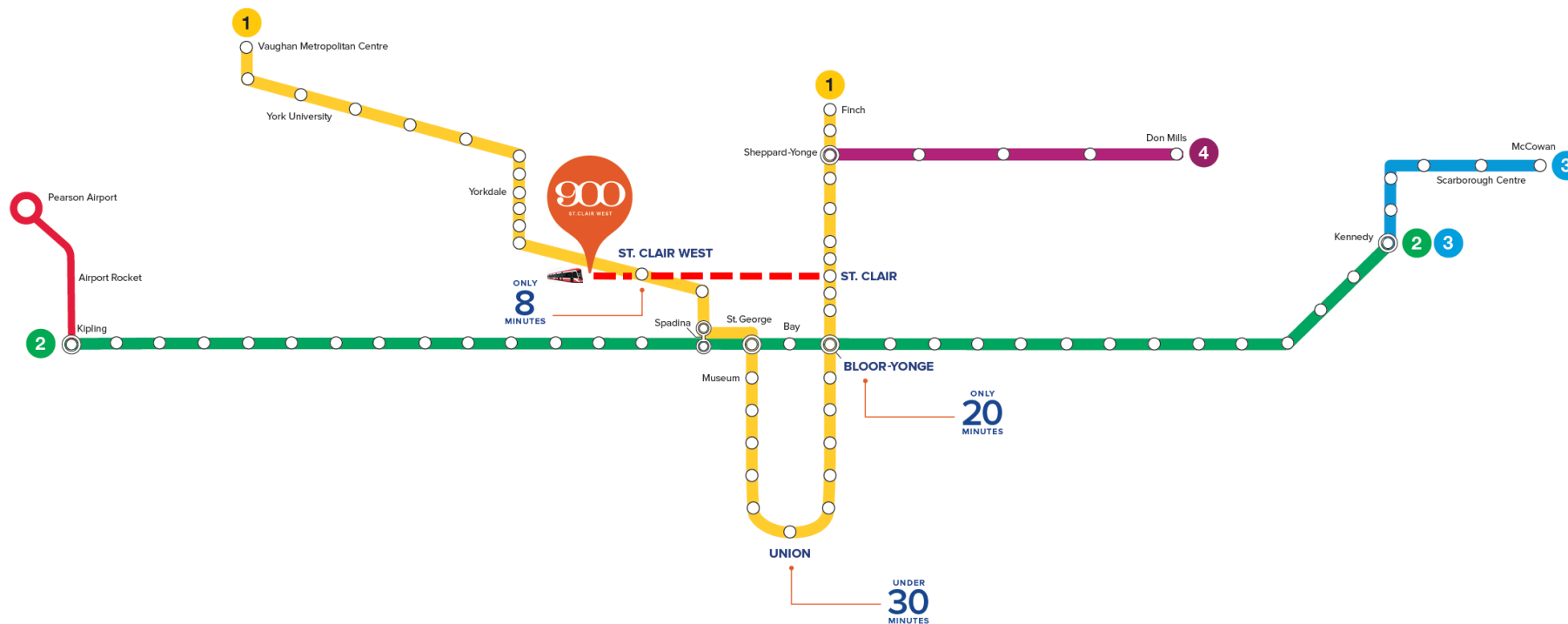
All prices, figures and materials are preliminary and are subject to change without notices E. & O.E. May 2020





THE SPIRIT OF ST. CLAIR

Rising proudly in midtown Toronto and with the St. Clair streetcar at your doorstep, St.Clair Village by Canderel™ lets you explore the array of top Toronto local restaurants, bakeries, bistros, markets, boutiques, galleries, parks, and nearby Artscape Wychwood Barns. A true Toronto original.



LIMITED TIME INCENTIVE

3F - SUITE OF THE MONTH

ST. CLAIR
VILLAGE



SUITE 3F
3 BEDROOMS, 2 BATH
1,294 SQ.FT.

*3D spin rendering is concept only. Does not illustrate quality or finishes offered in suite.

\$50,000 in Upgraded Finishes Included *

- EXTENDED 12FT KITCHEN WITH WINE FRIDGE
- UPGRADED STONE WATERFALL COUNTER-TOP ON ISLAND AND STONE BACKSPLASH
- UPGRADED MIELE APPLIANCES
- UPGRADED WIDE PLANK ENGINEERED HARWOOD FLOORING
- GAS BBQ CONNECTION ON TERRACE/BALCONY

Special 10% Deposit Until Occupancy Program*

- \$5,000 ON SIGNING
- BALANCE TO 5% IN 30 DAYS
- 5% IN 120 DAYS

PLUS

- FREE PARKING* - \$65,000 VALUE
- FREE LOCKER* - \$10,000 VALUE
- \$0 CLOSING COSTS*

PLUS

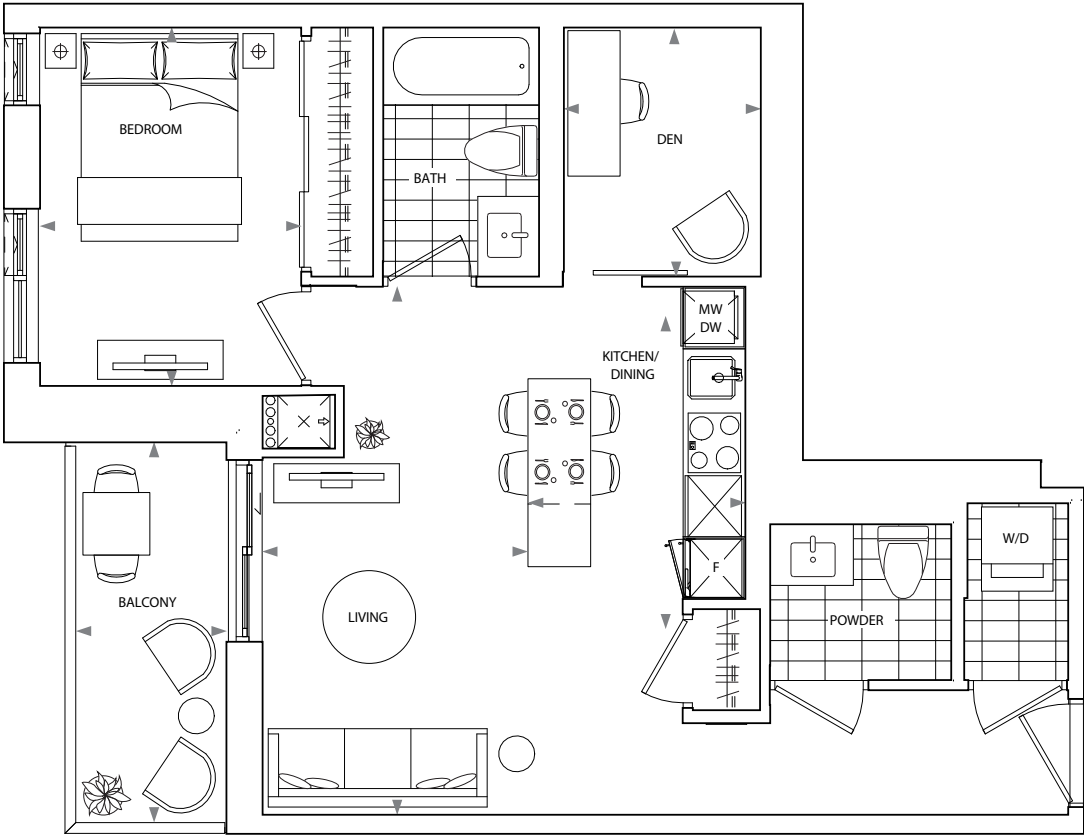
\$0 RIGHT TO LEASE DURING OCCUPANCY

Value \$2,500

FREE ASSIGNMENT

Value \$5,000

The Penthouse Collection

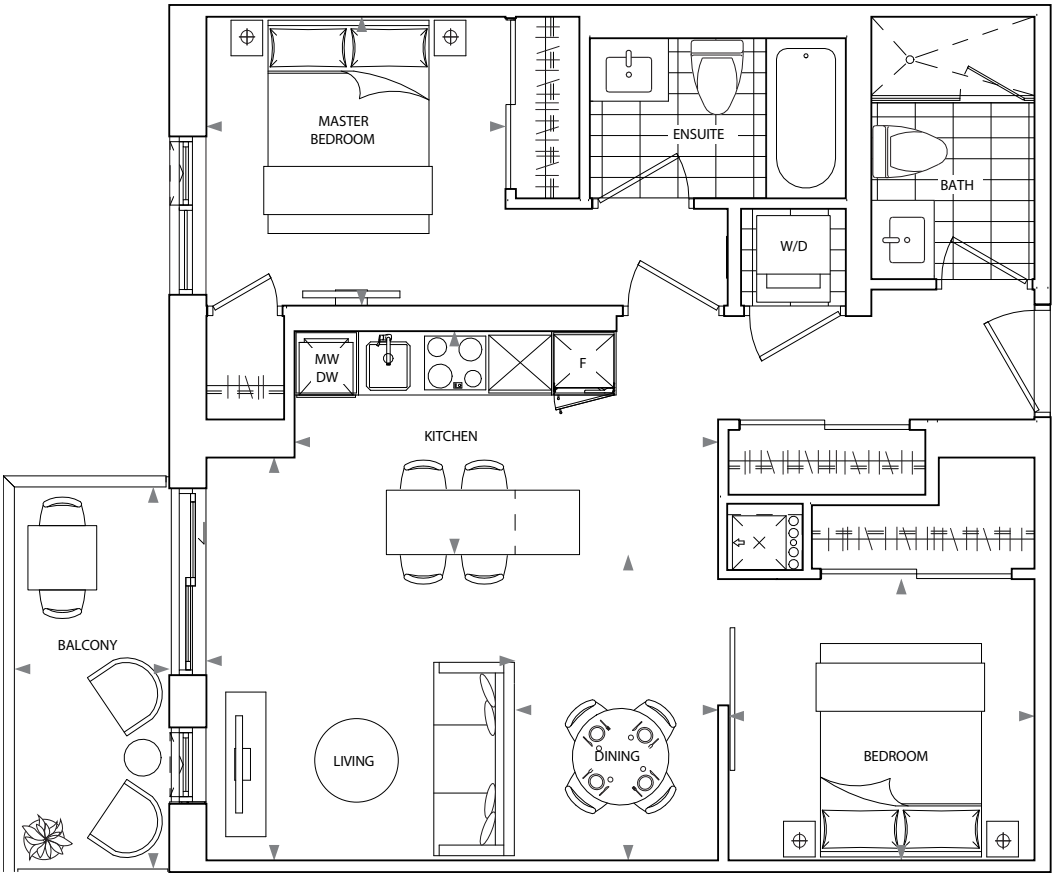
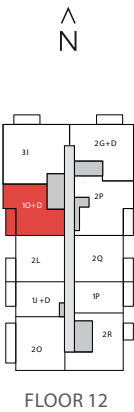


Suite 10+D

1 Bedroom + Den

Interior Living	670 SQ.FT.
Exterior Living	67 SQ.FT.
Total Living	737 SQ.FT

Living	8'-6" X 16'-11"
Kitchen/Dining	5'-11" X 10'-0"
Bedroom	8'-4" X 11'-6"
Den	6'-4" X 8'-0"
Balcony	4'-10" X 12'-2"

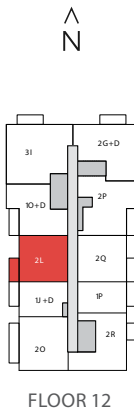


Suite 2L

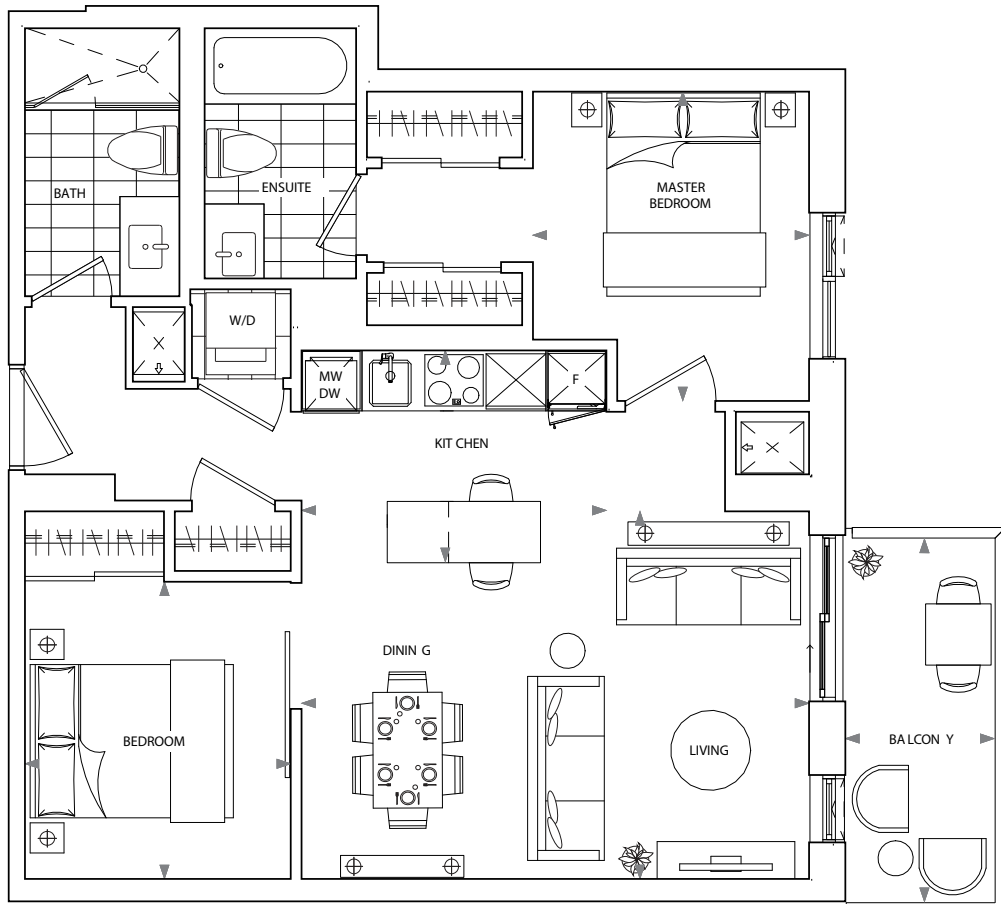
2 Bedroom

Interior Living	732 SQ.FT.
Exterior Living	66 SQ.FT.
Total Living	798 SQ.FT

Living	9'-7" X 12'-6"
Kitchen	13'-2" X 6'-11"
Dining	6'-4" X 9'-6"
Master Bedroom	9'-4" X 9'-0"
Bedroom	9'-6" X 8'-9"
Balcony	4'-10" X 11'-10"



All dimensions and specifications are approximate. Certain plans are reverse or mirror image. Balcony square footages are estimated and may vary from that stated. Please see Sales Representative for details. Furniture not included. Refer to key plan for unit location and orientation. E. & O.E.



\$899,900

SUITE 2Q



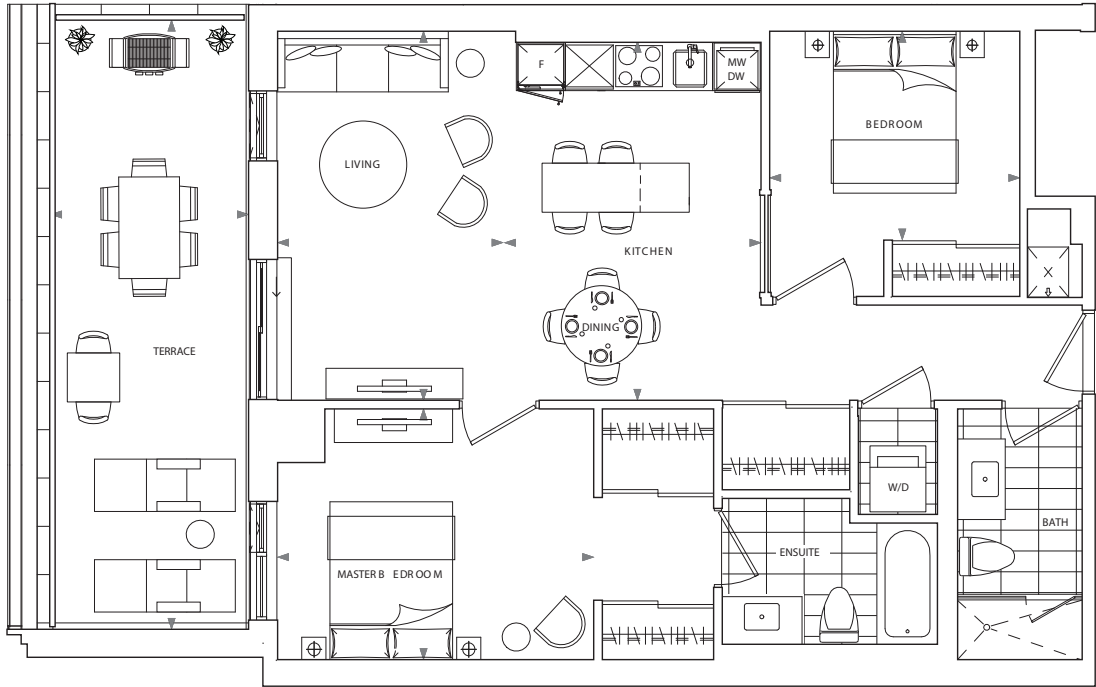
2 BEDROOM
 INTERIOR LIVING 739 SQ.FT.
 EXTERIOR LIVING 67 SQ.FT.
 TOTAL LIVING 806 SQ.FT

LIVING/DINING 16'-7" X 12'-1"
 KITCHEN 10'-0" X 6'-11"
 MASTER BEDROOM 9'-1" X 10'-2"
 BEDROOM 8'-9" X 9'-9"
 BALCONY 4'-11" X 11'-11"



FLOOR 12

ALL DIMENSIONS AND SPECIFICATIONS ARE APPROXIMATE. CERTAIN PLANS ARE REVERSE OR MIRROR IMAGE. BALCONY SQUARE FOOTAGES ARE ESTIMATED AND MAY VARY FROM THAT STATED. PLEASE SEE SALES REPRESENTATIVE FOR DETAILS. FURNITURE NOT INCLUDED. REFER TO KEY PLAN FOR UNIT LOCATION AND ORIENTATION. E. & O.E.



\$939,900

SUITE 2A-T



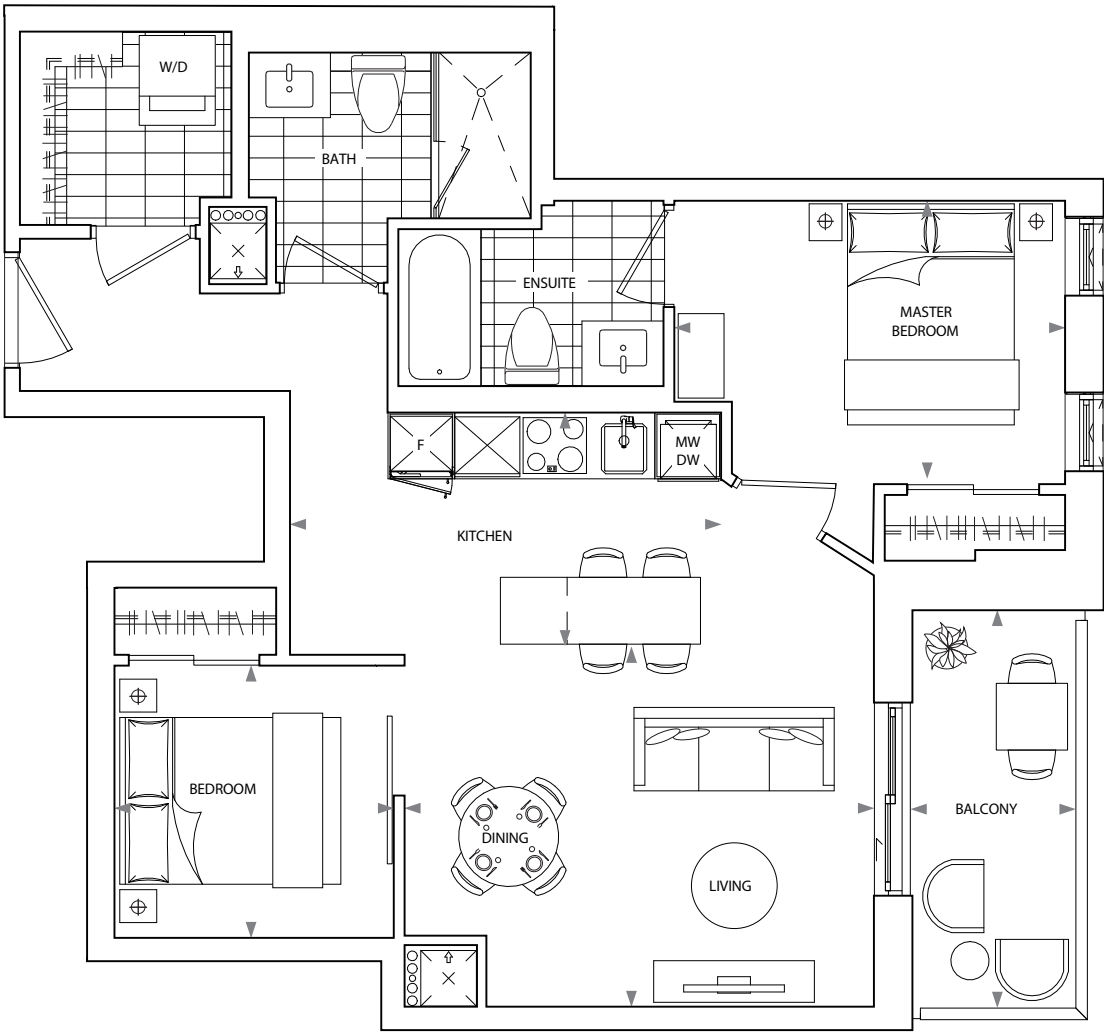
2 BEDROOM	
INTERIOR LIVING	915 SQ.FT.
EXTERIOR LIVING	216 SQ.FT.
TOTAL LIVING	1,131 SQ.FT
LIVING	9'-3" X 15'-1"
KITCHEN/DINING	10'-6" X 14'-8"
MASTER BEDROOM	12'-11" X 10'-3"
BEDROOM	10'-3" X 8'-7"
DEN	10'-3" X 8'-7"
TERRACE	8'-1" X 24'-11"



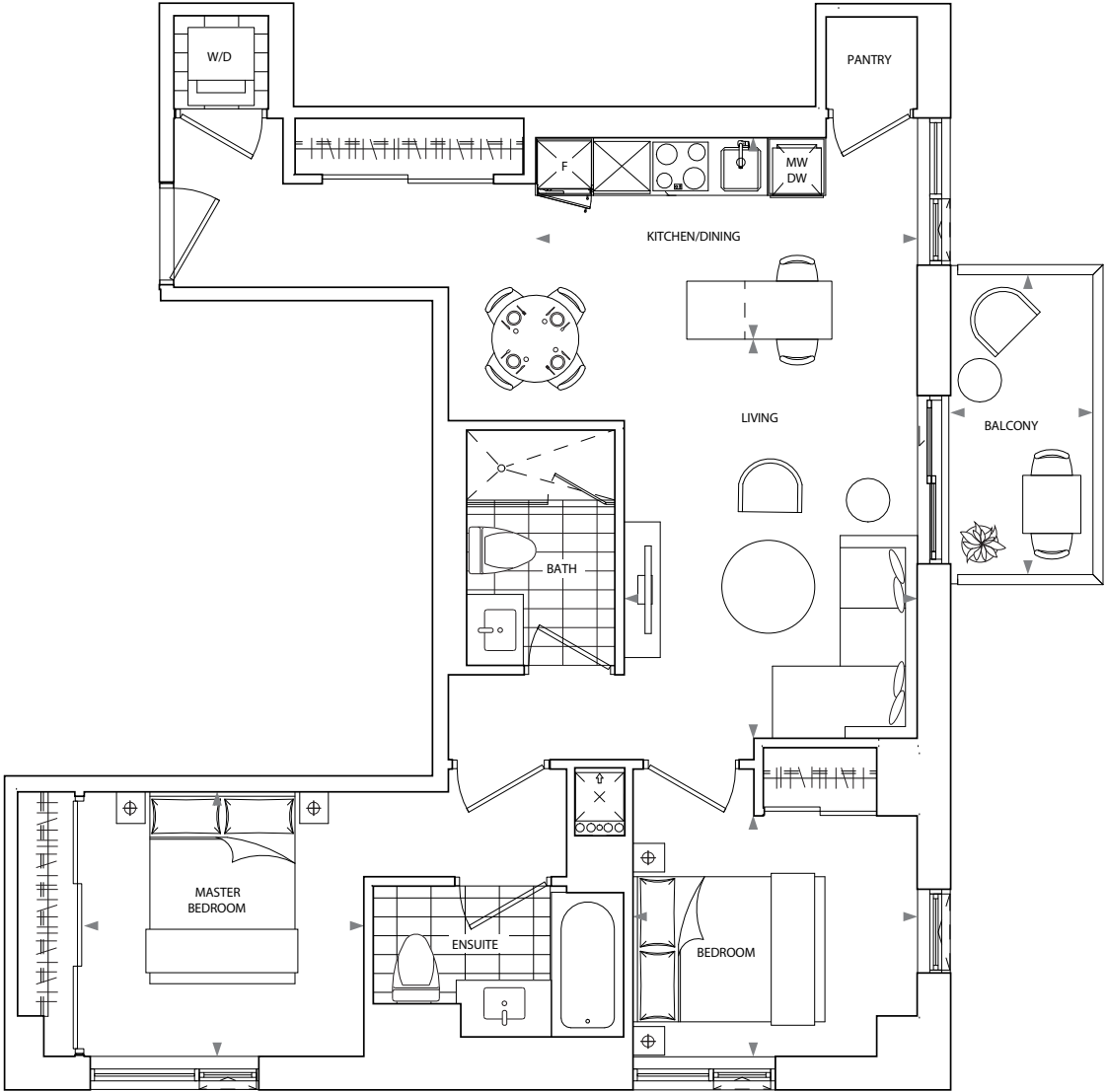
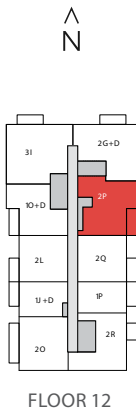
FLOOR 2

ALL DIMENSIONS AND SPECIFICATIONS ARE APPROXIMATE. CERTAIN PLANS ARE REVERSE OR MIRROR IMAGE. BALCONY SQUARE FOOTAGES ARE ESTIMATED AND MAY VARY FROM THAT STATED. PLEASE SEE SALES REPRESENTATIVE FOR DETAILS. FURNITURE NOT INCLUDED. REFER TO KEY PLAN FOR UNIT LOCATION AND ORIENTATION. E. & O.E.

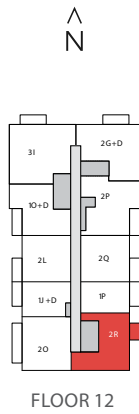
The Penthouse Collection



Suite 2P	
2 Bedroom	
Interior Living	743 SQ.FT.
Exterior Living	67 SQ.FT.
Total Living	810 SQ.FT
Living/Dining	14'-1" X 10'-10"
Kitchen	12'-11" X 7'-0"
Master Bedroom	11'-9" X 8'-4"
Bedroom	8'-5" X 8'-2"
Balcony	5'-0" X 11'-11"



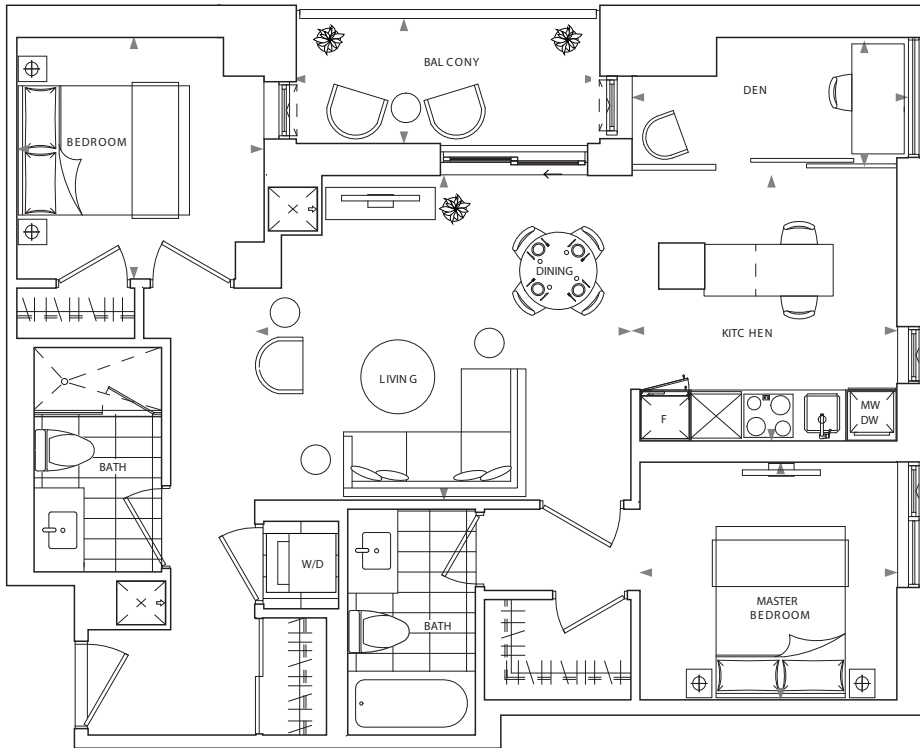
Suite 2R	
2 Bedroom	
Interior Living	867 SQ.FT.
Exterior Living	61 SQ.FT.
Total Living	928 SQ.FT
Living	10'-1" X 13'-9"
Kitchen/Dining	13'-2" X 7'-0"
Master Bedroom	9'-8" X 9'-2"
Bedroom	9'-10" X 8'-4"
Balcony	4'-11" X 10'-4"



All dimensions and specifications are approximate. Certain plans are reverse or mirror image. Balcony square footages are estimated and may vary from that stated. Please see Sales Representative for details. Furniture not included. Refer to key plan for unit location and orientation. E. & O.E.

\$949,900

ST.CLAIR
VILLAGE

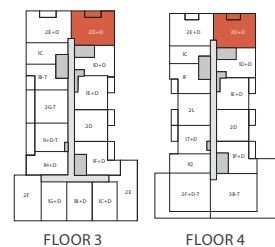


\$895,900

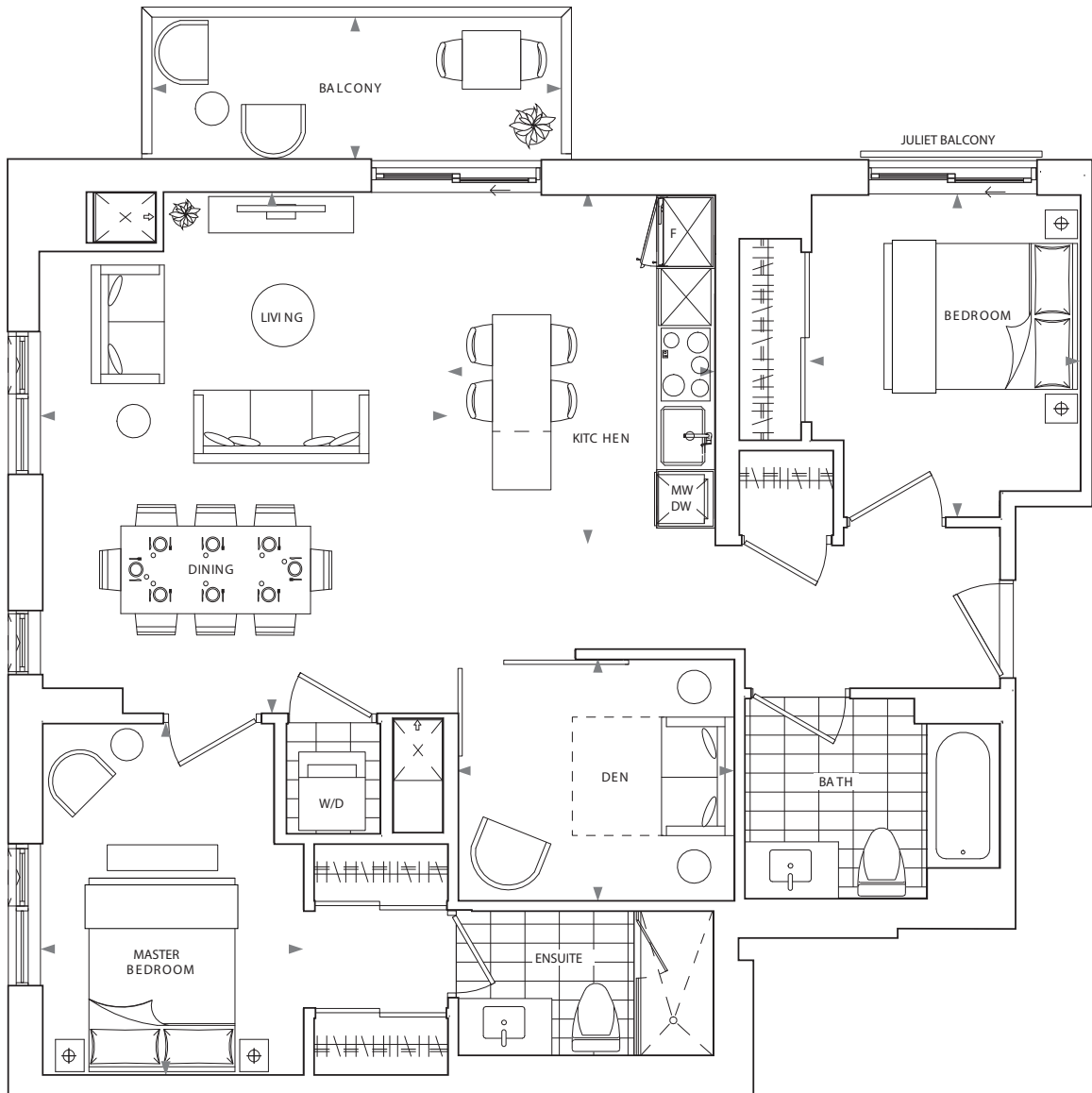
SUITE 2D+D



2 BEDROOM + DEN	
INTERIOR LIVING	917 SQ.FT.
EXTERIOR LIVING	63 SQ.FT.
TOTAL LIVING	980 SQ.FT.
LIVING/DINING	10'-4" X 10'-4"
KITCHEN	10'-0" X 9'-3"
MASTER BEDROOM	10'-7" X 9'-6"
BEDROOM	9'-7" X 9'-6"
DEN	10'-9" X 5'-1"
BALCONY	11'-10" X 4'-10"



ALL DIMENSIONS AND SPECIFICATIONS ARE APPROXIMATE. CERTAIN PLANS ARE REVERSE OR MIRROR IMAGE. BALCONY SQUARE FOOTAGES ARE ESTIMATED AND MAY VARY FROM THAT STATED. PLEASE SEE SALES REPRESENTATIVE FOR DETAILS. FURNITURE NOT INCLUDED. REFER TO KEY PLAN FOR UNIT LOCATION AND ORIENTATION. E. & O.E.



\$1,123,900

SUITE 2H+D



2 BEDROOM + DEN

INTERIOR LIVING 1,082 SQ.FT.
EXTERIOR LIVING 80 SQ.FT.
TOTAL LIVING 1,162 SQ.FT

LIVING/DINING 13'-11" X 17'-10"
KITCHEN 9'-2" X 12'-1"
MASTER BEDROOM 9'-0" X 12'-1"
BEDROOM 9'-3" X 11'-1"
DEN 9'-6" X 8'-4"
BALCONY 14'-0" X 4'-11"

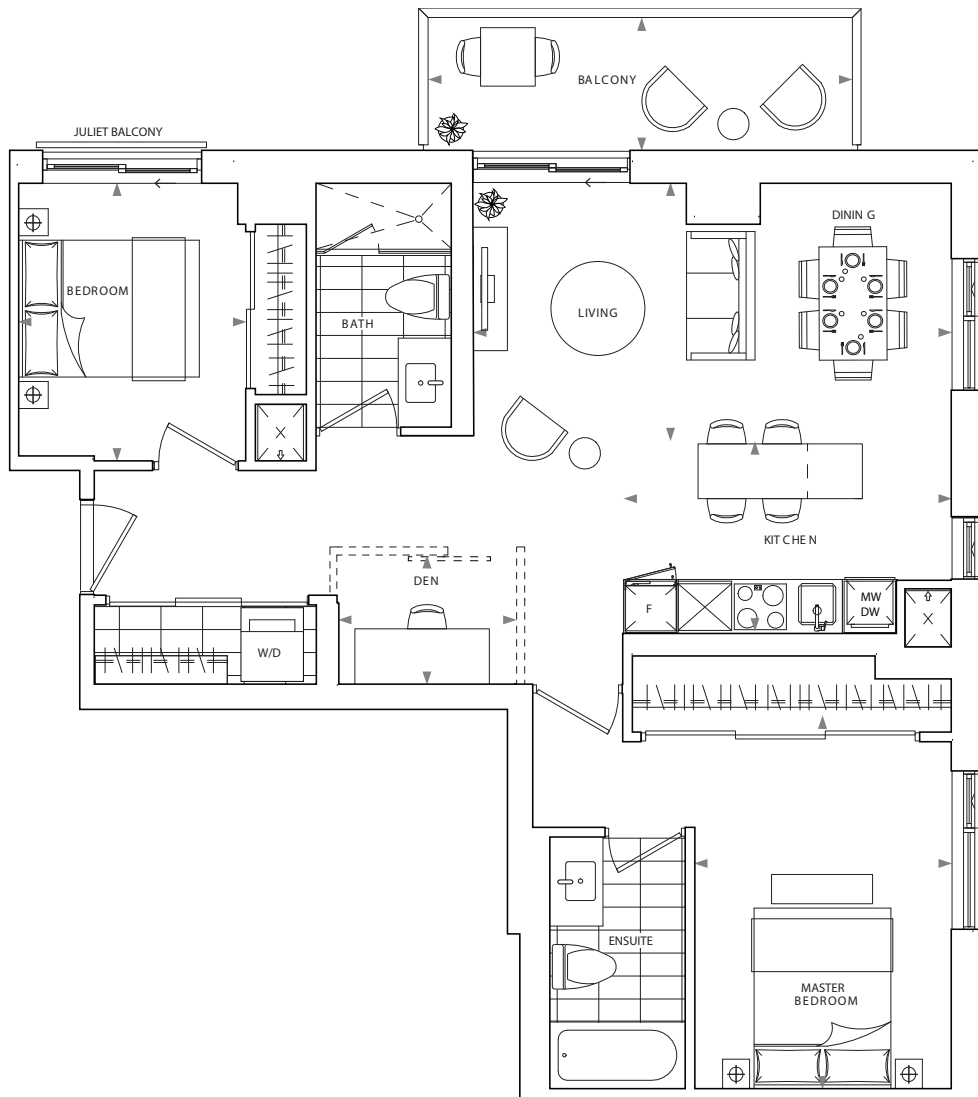


FLOOR 6



FLOOR 7-10

ALL DIMENSIONS AND SPECIFICATIONS ARE APPROXIMATE. CERTAIN PLANS ARE REVERSE OR MIRROR IMAGE. BALCONY SQUARE FOOTAGES ARE ESTIMATED AND MAY VARY FROM THAT STATED. PLEASE SEE SALES REPRESENTATIVE FOR DETAILS. FURNITURE NOT INCLUDED. REFER TO KEY PLAN FOR UNIT LOCATION AND ORIENTATION. E. & O.E.



SUITE 2G+D



2 BEDROOM + DEN
 INTERIOR LIVING
 EXTERIOR LIVING
 TOTAL LIVING

936 SQ.FT.
 89 SQ.FT.
 1,025 SQ.FT

LIVING/DINING
 KITCHEN
 MASTER BEDROOM
 BEDROOM
 DEN
 BALCONY

17'-6" X 9'-7"
 12'-0" X 7'-4"
 9'-5" X 12'-3"
 8'-4" X 10'-2"
 6'-6" X 4'-9"
 15'-6" X 4'-11"



FLOOR 12

ALL DIMENSIONS AND SPECIFICATIONS ARE APPROXIMATE. CERTAIN PLANS ARE REVERSE OR MIRROR IMAGE. BALCONY SQUARE FOOTAGES ARE ESTIMATED AND MAY VARY FROM THAT STATED. PLEASE SEE SALES REPRESENTATIVE FOR DETAILS. FURNITURE NOT INCLUDED. REFER TO KEY PLAN FOR UNIT LOCATION AND ORIENTATION. E. & O.E.

\$1,297,900

SUITE 3C

3 BEDROOM
INTERIOR LIVING 1,248 SQ.FT.
EXTERIOR LIVING 125 SQ.FT.
TOTAL LIVING 1,373 SQ.FT

LIVING 15'-7" X 10'-4"
FAMILY 10'-11" X 10'-4"
KITCHEN/DINING 16'-6" X 14'-11"
MASTER BEDROOM 11'-2" X 9'-11"
BEDROOM 2 11'-7" X 9'-2"
BEDROOM 3 9'-4" X 10'-11"
BALCONY 22'-4" X 4'-10"



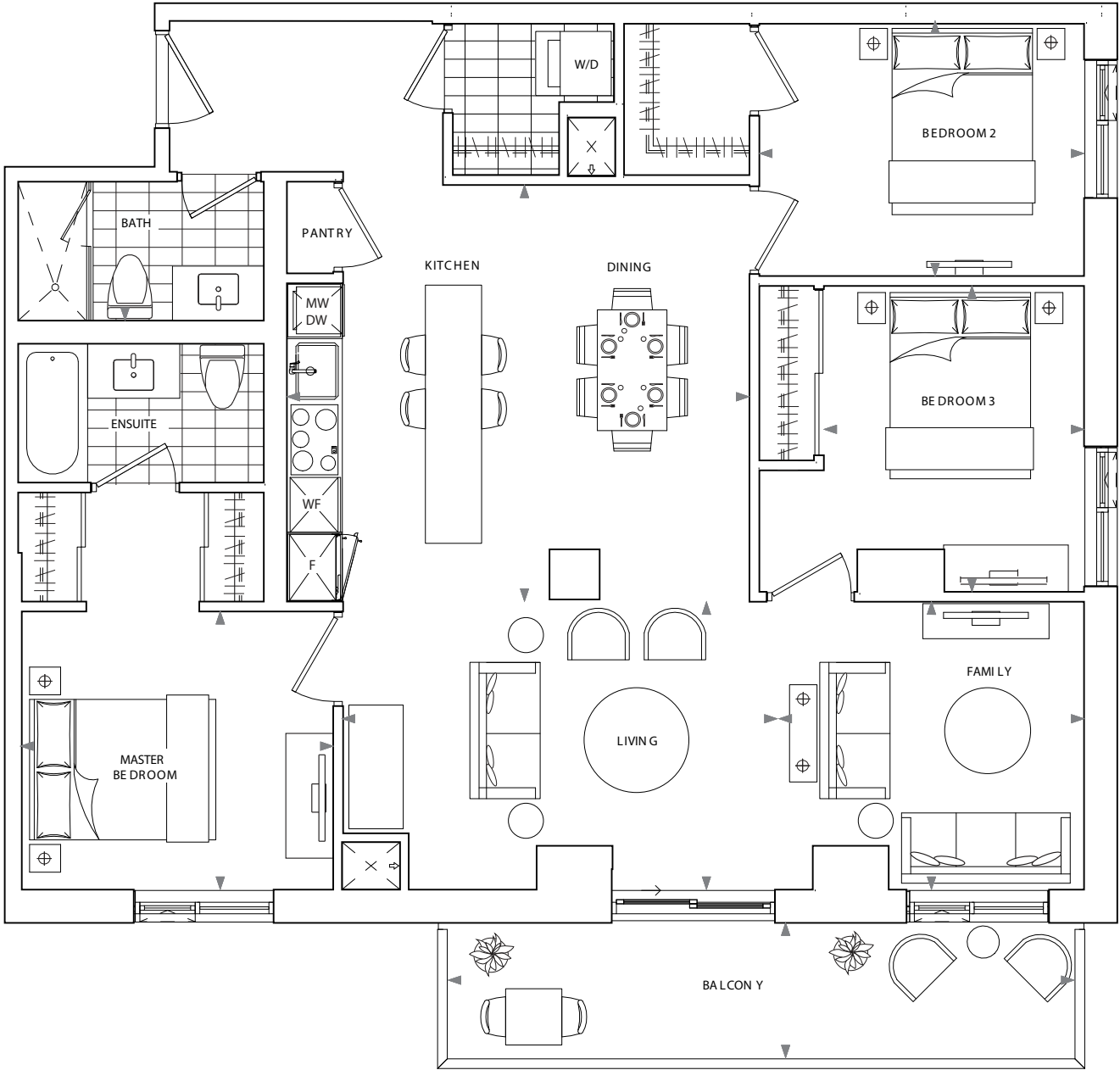
SOUTH ELEVATION



EAST ELEVATION



FLOOR 5



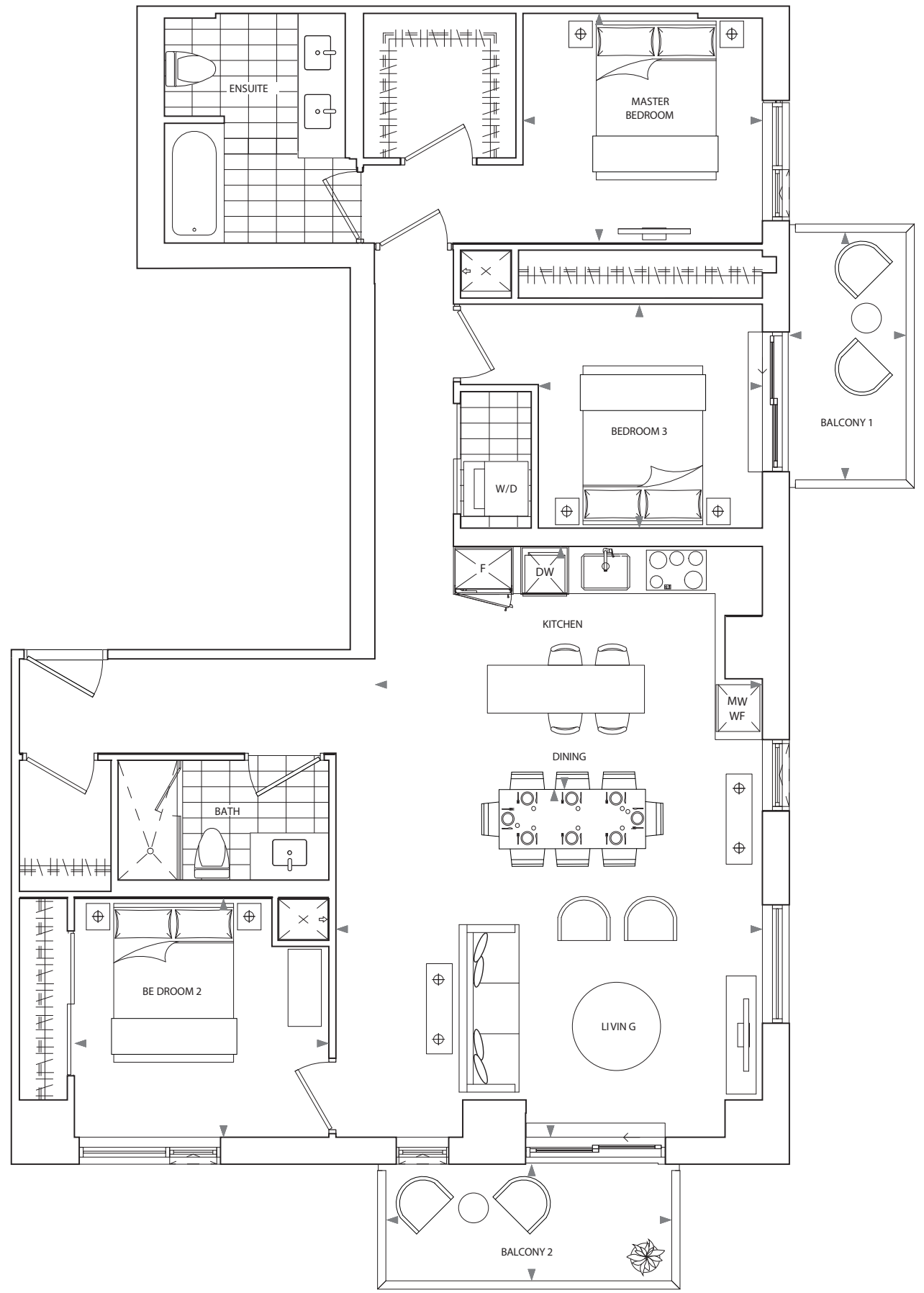
ALL DIMENSIONS AND SPECIFICATIONS ARE APPROXIMATE. CERTAIN PLANS ARE REVERSE OR MIRROR IMAGE. BALCONY SQUARE FOOTAGES ARE ESTIMATED AND MAY VARY FROM THAT STATED. PLEASE SEE SALES REPRESENTATIVE FOR DETAILS. FURNITURE NOT INCLUDED. REFER TO KEY PLAN FOR UNIT LOCATION AND ORIENTATION. E. & O.E.

\$1,342,900

SUITE 3E

3 BEDROOM
INTERIOR LIVING 1,284 SQ.FT.
EXTERIOR LIVING 129 SQ.FT.
TOTAL LIVING 1,413 SQ.FT

LIVING	17'-10" X 14'-6"
FAMILY	10'-11" X 10'-4"
KITCHEN/DINING	16'-2" X 10'-2"
MASTER BEDROOM	10'-0" X 9'-6"
BEDROOM 2	10'-7" X 10'-0"
BEDROOM 3	9'-4" X 9'-4"
BALCONY 1	4'-10" X 10'-4"
BALCONY 2	11'-11" X 4'-10"



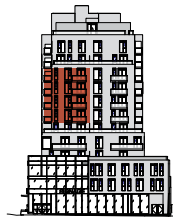
ALL DIMENSIONS AND SPECIFICATIONS ARE APPROXIMATE. CERTAIN PLANS ARE REVERSE OR MIRROR IMAGE. BALCONY SQUARE FOOTAGES ARE ESTIMATED AND MAY VARY FROM THAT STATED. PLEASE SEE SALES REPRESENTATIVE FOR DETAILS. FURNITURE NOT INCLUDED. REFER TO KEY PLAN FOR UNIT LOCATION AND ORIENTATION. E. & O.E.

\$1,437,900

SUITE 3F

3 BEDROOM
INTERIOR LIVING 1,294 SQ.FT.
EXTERIOR LIVING 164 SQ.FT.
TOTAL LIVING 1,458 SQ.FT

LIVING / DINING 14'-11" X 19'-6"
KITCHEN 10'-11" X 11'-1"
MASTER BEDROOM 9'-11" X 13'-5"
BEDROOM 1 11'-0" X 11'-0"
BEDROOM 2 10'-8" X 8'-1"
BALCONY 1 9'-5" X 4'-10"
BALCONY 2 4'-10" X 19'-6"



SOUTH ELEVATION

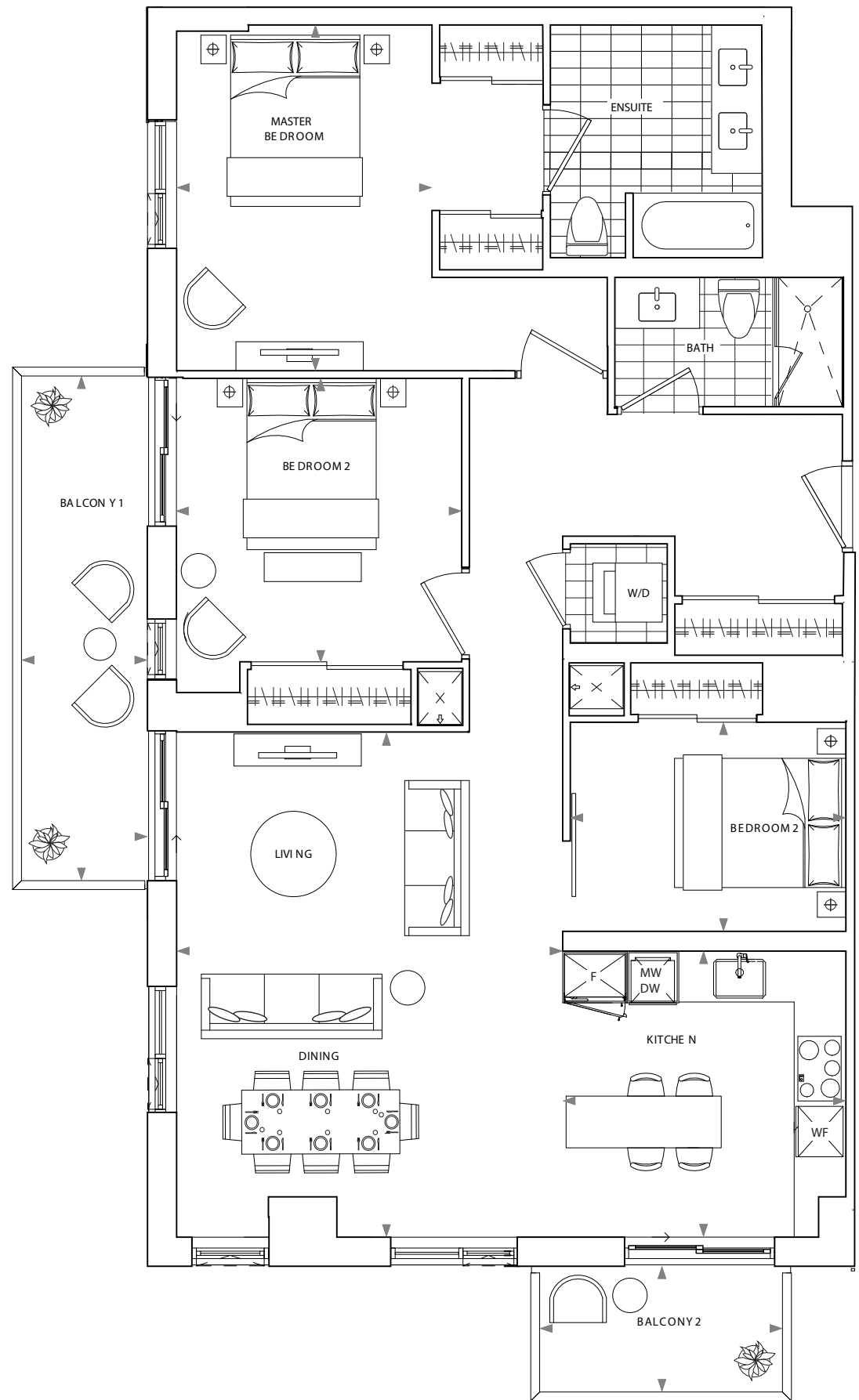


WEST ELEVATION



FLOOR 7-10

ALL DIMENSIONS AND SPECIFICATIONS ARE APPROXIMATE. CERTAIN PLANS ARE REVERSE OR MIRROR IMAGE. BALCONY SQUARE FOOTAGES ARE ESTIMATED AND MAY VARY FROM THAT STATED. PLEASE SEE SALES REPRESENTATIVE FOR DETAILS. FURNITURE NOT INCLUDED. REFER TO KEY PLAN FOR UNIT LOCATION AND ORIENTATION. E. & O.E.



SUITE 3A+D-T

3 BEDROOM + DEN
INTERIOR LIVING
EXTERIOR LIVING
TOTAL LIVING

1,954 SQ.FT.
1,038 SQ.FT.
2,992 SQ.FT

LIVING 17'-2" X 13'-8"
DINING 17'-2" X 10'-5"
KITCHEN 8'-6" X 19'-6"
MASTER BEDROOM 9'-10" X 13'-3"
BEDROOM 1 11'-6" X 11'-7"
BEDROOM 2 10'-0" X 10'-10"
DEN 8'-5" X 7'-1"
BALCONY 4'-10" X 14'-1"
TERRACE 1 16'-6" X 46'-5"
TERRACE 2 39'-4" X 3'-6"



ALL DIMENSIONS AND SPECIFICATIONS ARE APPROXIMATE. CERTAIN PLANS ARE REVERSE OR MIRROR IMAGE. BALCONY SQUARE FOOTAGES ARE ESTIMATED AND MAY VARY FROM THAT STATED. PLEASE SEE SALES REPRESENTATIVE FOR DETAILS. FURNITURE NOT INCLUDED. REFER TO KEY PLAN FOR UNIT LOCATION AND ORIENTATION. E. & O.E.

